

# SHELLFISH REEFS RESTORATION SUITABILITY MODELLING

Technical manual

January 2023 | Prepared by: Alice Howie, Carleisha Hanns, Seth Theuerkauf, Simon Reeves, Chris Gillies and Kate Longley-Wood

# Contents

Acknowledgements.....	4
Executive Summary.....	5
Foreword .....	8
Introduction .....	9
Methodology .....	11
1 Defining ecological reference ecosystem and understanding drivers to disappearance .....	12
2 Planning the modelling approach .....	14
2.1 Developing project objectives and identifying specific area of interest to restore .....	14
2.2 Selecting relevant parameters.....	14
2.3 Assessing data availability and sources.....	15
2.4 Developing parameter criteria and weights.....	16
3 Data organisation and preparation.....	11
3.1 Data organisation .....	20
3.2 Spatially defining an area of interest .....	20
3.3 Choosing a coordinate system and projection.....	22
3.4 Data manipulation – creating and converting spatial vector data .....	26
3.5 Applying parameter criteria to vector and raster data .....	37
4 Rasters and model construction .....	40
4.1 Defining model resolution .....	40
4.2 Converting polygon and raster data to model input rasters .....	42
4.3 Categorizing input rasters (binary and gradient) .....	43
4.4 Reclassifying rasters.....	43
4.5 Calculating RSM .....	46
4.6 Incorporating weights into RSM calculation .....	48
4.7 Using Suitability Modeler in ArcGIS Pro .....	48
5 Next steps to undertake after developing a restoration suitability model .....	49
5.1 Model verification and validation .....	49
5.2 Stakeholder engagement.....	53
5.3 Communicating modelling results .....	53
6 Limitations and future directions .....	54

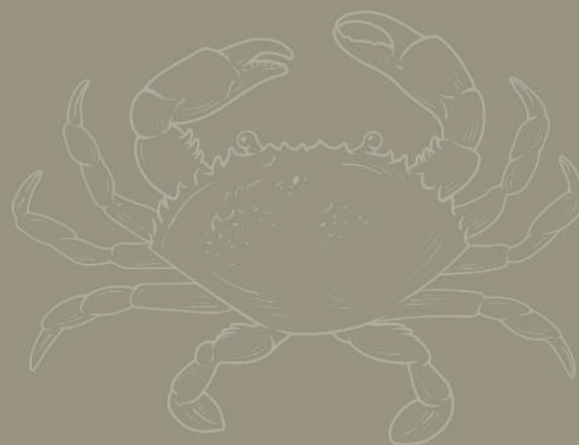
6.1 New modelling frameworks and methods .....	54
6.2 Role of new technology .....	57
6.3 Role of other tools .....	58
Appendix .....	59
Appendix A: Sample Data Parameters.....	59
Appendix B: Strategies for stakeholder engagement and consultation.....	61
References .....	65

# Acknowledgements

We acknowledge the traditional owners of the lands and waters on which this publication was produced, and where restoration activities occur. We pay our respects to elders, both past present and emerging.

This work was supported by the Reef Builder program funded by the Australian Government. We thank Tein McDonald (PhD, Society for Ecological Restoration Australasia), Lisa WickLiffe (PhD, Marine Spatial Ecologist), and Richard Campbell (marine restoration practitioner) for kindly reviewing the manual.

Suggested citation for publication: Howie, A., Hanns, C., Theuerkauf, S., Reeves, SE., Gillies., CL and Longley-Wood, K. (2023). Shellfish Reef Restoration Suitability Modelling: Technical Manual. The Nature Conservancy, Arlington VA, USA.



# Executive Summary

## Importance and vision

Spatial identification and prioritisation of sites suitable for restoration activities is a critical pre-requisite for the planning of any restoration project. This technical manual highlights the need in standardised approaches for conducting site suitability assessments and presents The Nature Conservancy's (TNC's) method for Restoration Suitability Modelling to guide restoration practitioners in applying this decision support tool.

Increasingly, anthropogenic impacts on terrestrial, marine, and estuarine ecosystems are becoming a ubiquitous global concern. Climate change and the increasing magnitude, duration, and frequency of severe weather events are leading to a growing need to stabilise and restore ecosystems to provide protection and build resilience. The United Nations (UN) Decade on Ecosystem Restoration (2021 – 2030) is intended to facilitate global cooperation for the restoration of degraded and destroyed ecosystems. TNC, a leading global conservation organisation, developed this manual with the intent to catalyse development of high quality, well-planned approaches to shellfish reef restoration projects. Indeed, whilst this technical manual for restoration suitability modelling is presented in the context of shellfish reef restoration, it is important to note that each section of the manual may be adapted to target other habitats and species across marine and terrestrial realms with relative ease.

TNC has a long history of experience in working to restore and recover degraded shellfish reefs. These shellfish reefs, predominately comprised of oysters and mussels, historically were an extensive ecosystem in intertidal and subtidal estuarine systems. In more recent years, in response to destructive commercial fishing practices and changing estuarine environments, shellfish reefs have experienced global population decline to approximately 85% of historic populations. With the loss of these reefs, communities lost a wealth of ecosystem services, including high biodiversity, enhanced water quality, protection from shoreline erosion, a distinct fishery (bivalves) and an important habitat for life history stages of other fisheries species (e.g. finfish and crustaceans), as well as significant cultural values.

Estuaries are often the centre of cultural and social importance in coastal communities, and as a result, substantial shifts in land and water use and quality have occurred to these systems. Rapid urbanisation of estuarine catchments, increased marine traffic and recreational use have led to substantial biogeochemical and physical changes of estuarine ecosystems. Natural flow regimes and larval settlement are altered due to modifications in hydrodynamic flow from dredge and fill activities, shoreline hardening, and increased boating/shipping traffic. Coastal land-use changes within estuarine catchments have also altered water quality, affecting animal and plant population dynamics.

Cumulatively, anthropogenic alterations in many estuarine landscapes have shifted historical mosaics of complex biogenic (i.e., estuarine) habitats to systems supporting a complex array of anthropogenic services, features and areas with varied use and ecosystem condition based on relative human use. For successful shellfish reef restoration to occur in these modern estuarine systems, there are two factors needing consideration – first, whether the initial causes of shellfish reef decline have disappeared, and secondly, whether the shifting uses and dynamics of an estuary alter the suitability of the estuary (or a given site) on an ongoing basis. Restoration suitability modelling (RSM) is a term increasingly used in restoration ecology and planning to identify the fitness or suitability of a site for restoration purposes, building on concepts of Habitat Suitability (Index) Modelling. Here we describe an RSM method developed by TNC for shellfish reefs, which accounts for shifting landscape mosaic and includes relevant biological, ecological, logistical, and social parameters ultimately producing a relevant map to guide restoration site selection and prioritisation efforts based on the best available present-day data.

## The approach

In developing an RSM, there are generally six steps practitioners need to take. Many of these steps are iterative and depend on strong communication with the local community, stakeholders, scientists, and traditional owners.

### 1) Defining an ecological reference system

An ecological reference system defines the designed model ecological 'endpoints' a restoration project is working towards. An ecological reference system describes the ecological community composition, structure and function of a restored system.

The process of developing an ecological reference system, requires a firm understanding of the drivers of distribution for any given ecosystem, which in turn can be useful in the selection of model parameters and criteria, thus guiding further data acquisition efforts.

At this stage, practitioners also need to consider on a regional level, where restoration projects may take place, and at what scale, based on the historic, current, and predicted future extent of target shellfish habitat. It is also important at the siting level to assess the local drivers to shellfish habitat disappearance and identify whether there are still local threats that would hinder restoration efforts. It is recommended input for local drivers be sourced from scientific literature, local historical documents, conversations with stakeholders and local communities.

### 2) Establishing project goals, area of interest and model parameters

Once the ecological reference has been defined, practitioners need to establish suitable project goals and the area of interest (AOI). The AOI is where the model will be conducted and project goals are defined after liaison with local stakeholders and project partners. Project goals and area of interest will inform the model parameters – including definition of an appropriate coordinate system and model resolution as well as data parameters to be included within the model.

Data parameters included in restoration suitability modelling may include biological, physical, ecological, socio-economic and regulatory datasets. Parameters selected for each model may depend upon data availability, specific restoration objectives and project goals, as well as local and unique conditions.

### 3) Organizing and preparing datasets

Before constructing the model, it is important to organise (i.e., categorize) the data to be used. Consistency is crucial and all datasets should be converted to raster to construct the model described herein. Key steps in this stage are modifying and reclassifying or transforming data to ensure compatibility of parameters into the final model and GIS software of choice.

### 4) Constructing the model

Once all datasets are in the format of a reclassified raster layer (described herein), the model can begin to be constructed. The model is typically calculated using a Raster Calculator tool, whereby a geometric mean formula is used to specify how specific layers are multiplied together and weightings are subsequently applied.

### 5) Evaluating model output

After developing the restoration suitability model, several steps can be taken to ensure that final sites selected for restoration are selected with statistical confidence. To implement a model with confidence, there is a four-step approach applied, including development, calibration, verification and calibration. Furthermore, if available, model outputs can be compared to historic or current shellfish distribution maps. Ground-truthing potential restoration sites with site visits, is one of the most practical and recommended ways to assess the

accuracy of suitability model output – to either collect additional data to feedback into the modelling process or assist in prioritising potential sites.

## 6) Communicating and applying model results

Once the restoration suitability model is finalised, it is important to be able to communicate the modelling results in an effective manner to the surrounding community, project team, partners and stakeholders. It is advised to consult with relevant stakeholders (locals, community groups, scientists and Traditional Owners) prior to restoration sites being confirmed. Early engagement is often critical to building good community relationships, garnering support for restoration and ideally working towards a final agreement on sites that satisfies all parties. Based on community feedback received, a judgement call can be made on whether to re-run the model with adjusted parameter criteria. This may involve preparing a short non-GIS technical report and producing static or interactive maps. It is always important to communicate this modelling process is not an authoritative stand-alone model and should be utilised to select suitable sites only when accompanied with site visits, stakeholder consultation and best judgment.

Restoration suitability modelling is a continuously evolving and iterative process requiring semi-regular re-evaluation and updates for each model. It is also essential that restoration suitability modelling practitioners regularly assess new and emerging technology, methods, tools, and data - each of which has the potential to improve workflows and confidence in model outputs. Increasing interest in restoration, and active shellfish reef restoration projects within Australia and globally, has led to the need to develop a standardised approach to restoration suitability modelling. This technical guide is designed for restoration practitioners, GIS technicians and spatial scientists aiming to design and construct restoration suitability models. Restoration suitability models are decision support tools acting as a guide for site selection; however, model validation is always important through ground-truthing model output. This document outlines global guidelines, logical steps, and discusses how site- and species-specific variations may be addressed in the site selection process.

# Introduction

Ecological restoration is a global endeavour seeking to transition humanity away from being agents of degradation towards undertakings that conserve and recover natural systems. Ecosystem restoration is a multidisciplinary, solutions-based approach engaging communities, scientists, policymakers, and land managers to repair ecological damage and rebuild a healthier relationship among people and the rest of nature. When ecological restoration is implemented effectively and sustainably, it can contribute to protecting biodiversity; improving human health and wellbeing; increasing food and water security; delivering goods, services, and economic prosperity; and supporting climate change mitigation, resilience, and adaptation.

Shellfish reefs (encompassing oysters and mussels) were once ubiquitous in many shallow water marine environments, replacing corals as the dominant reef forming ecosystem in higher latitude systems. However, over the past two centuries, more than 85% of oyster reefs around the world have been lost (Beck *et al.*, 2011). In response, there has been a worldwide effort to restore shellfish reef ecosystems and the associated ecosystem services they provide, including water filtration, nutrient cycling, fish production, and shoreline protection (Fitzsimons *et al.*, 2019; McLeod *et al.*, 2019; Pogoda *et al.*, 2019). The field of oyster restoration primarily developed in the United States over the past 20 years (Luckenbach *et al.*, 1999; Schrack *et al.*, 2012), but has recently expanded to new geographic regions such as Australia, New Zealand, Europe, and Asia (Fitzsimons *et al.*, 2019, 2020), and has grown to encompass non-North American oyster species (e.g., *Saccostrea glomerata*, *Ostrea edulis*, *Ostrea angasi*, *Magallana (Crassostrea) sikamea*, *Magallana (Crassostrea) hongkongensis*), mussel species (e.g., *Mytilus galloprovincialis* and *Perna canaliculus*).

In a shellfish restoration project, success is often defined as population persistence of the species targeted for recovery (Puckett *et al.*, 2018; Lester *et al.*, 2020). While there are many successes, poor siting decisions are widely considered to contribute to suboptimal results or failure of restoration projects (Coen and Luckenbach, 2000; Powers *et al.*, 2009; Beseres Pollack *et al.*, 2012; Schulte and Burke, 2014; Bayraktarov *et al.*, 2016; Walles *et al.*, 2016; Bersosa Hernández *et al.*, 2018; De Santiago *et al.*, 2019).

Whilst historic presence of shellfish reefs is frequently used as a good indicator of a site having the capacity to support a reef restoration project, many modern estuarine systems have dramatically changed, with limited function due to a wide variety of anthropogenic influences including destructive fishing practices, declines in water quality and disease introduction. Further anticipated changes (e.g. anthropogenic climate change and coastal development), may preclude the suitability of a historical site identification for contemporary restoration work (Howie and Bishop, 2021). Therefore, due to the dynamic nature of these systems, site selection is a complex process requiring strategic decision-making using available data

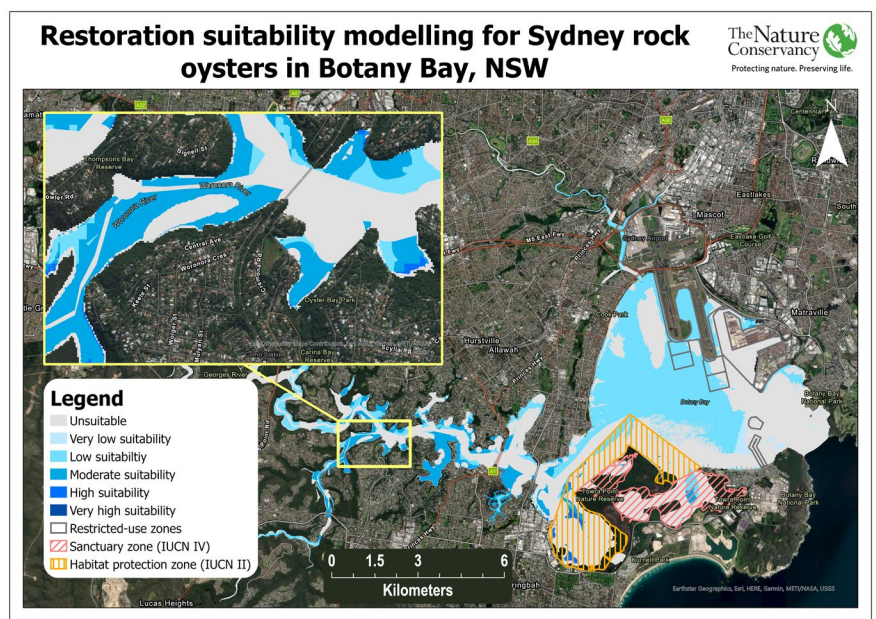


Figure 1. Example of the mapped output of a restoration suitability model developed for *Saccostrea glomerata* in Botany Bay, NSW, Australia. Suitable restoration areas range from very low suitability (light blue) to very high suitability (dark blue). Areas of unsuitable habitat are in light grey.



and/or models about appropriate locations, spatial extent and/or configurations of restoration projects. As such, restoration suitability models (e.g., mapped output of a RSM in Figure 1) built upon modern, robust geospatial data provide an essential framework for considering both present and predicted future conditions to maximize the likelihood of restoration success.

Methodologies for restoration suitability modelling for shellfish reefs vary in complexity and design, and are often dependent on target restoration areas. Previously, approaches to ascertaining whether a site is suitable for shellfish reef restoration have ranged from simple summaries of information to more complex modelling approaches. Increased availability of large-scale environmental datasets, satellite imagery, and the emergence of contemporary Geospatial Information Systems (GIS) software, has led to a growing number of restoration practitioners applying the principles of restoration suitability modelling to the planning of both terrestrial and marine projects (Fitzsimons *et al.*, 2020; Lester *et al.*, 2020) (Figure 2).

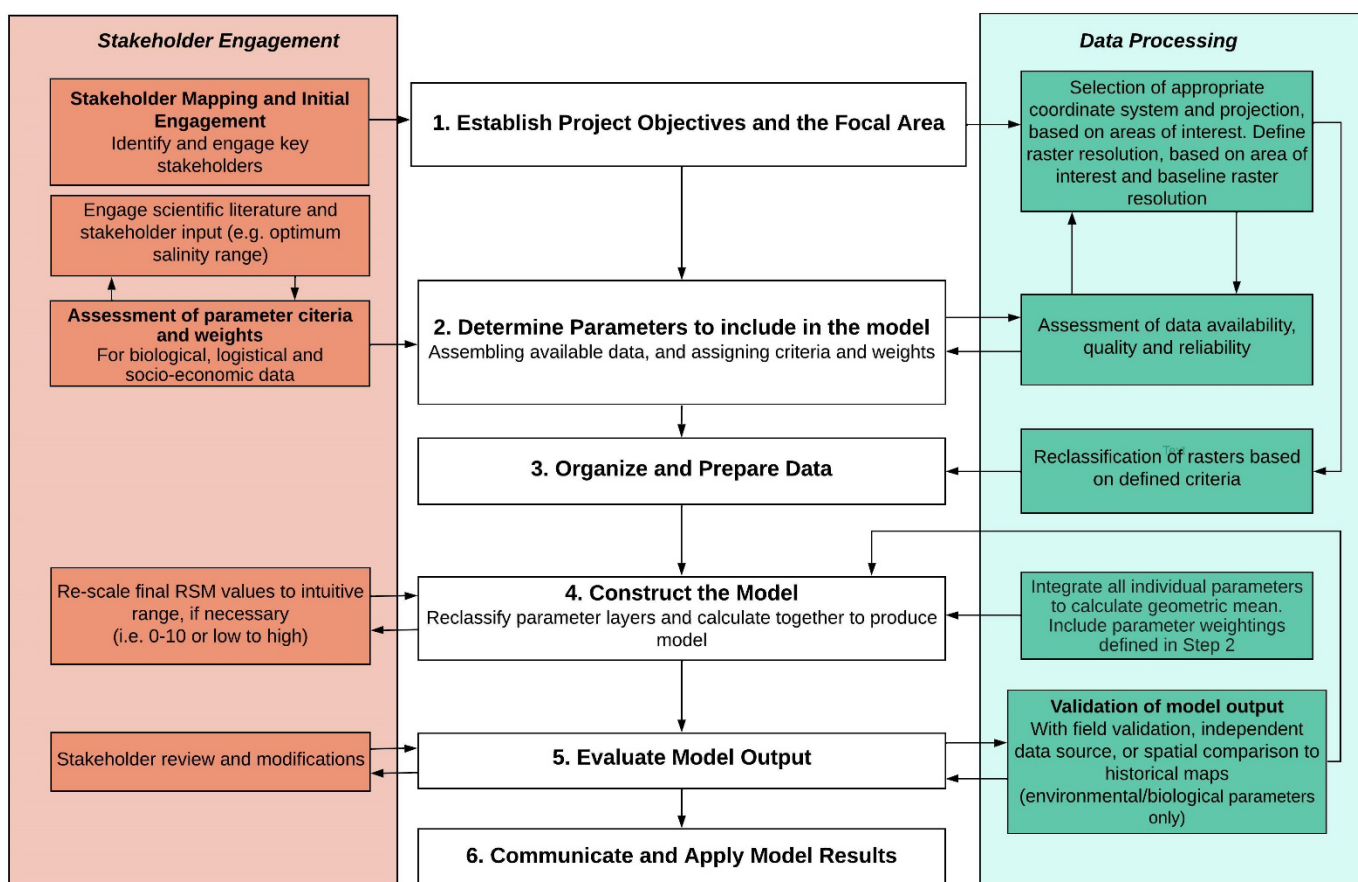


Figure 2. Flow diagram illustrating stages of restoration suitability modelling, including relevant stakeholder engagement steps (orange) and data processing (green) steps.

Restoration Suitability Models (RSMs) are an adaptation of traditional Habitat Suitability Index Models (i.e., Habitat Suitability Models) used extensively, and with success, to identify sites at which to establish/restore both terrestrial and marine habitats, including shellfish reefs (Theuerkauf *et al.*, 2017; Theuerkauf, Eggleston and Puckett, 2019). Habitat Suitability Models (HSMs) utilize species-habitat relationships, with geospatial environmental data (usually biological and physical parameters) and corresponding tolerances of the target restoration species, to identify sites that are most likely to provide suitable habitat for the restoration species of interest. RSMs build on HSMs by including logistical, ecological and/or socio-economic parameters in addition to the physical and biological parameters (Figure 3). This more targeted modelling approach identifies sites not only based on habitat suitability but considers the actual feasibility of restoration and stakeholder preferences.

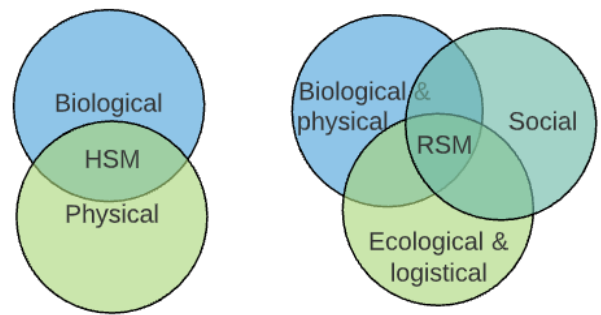


Figure 3. Schematic diagram of data types that may be included in each restoration suitability model type.

Similar to marine spatial planning (MSP – see marine spatial planning & restoration suitability modelling box), it is important to note that HSMs or RSMs are intended to be based on the best available data; however, it is unlikely that there will be available authoritative data for every parameter of interest, or in the preferred spatial resolution. With this in mind, suitability models are often constructed using the best available contemporary data. In many cases, there may be limitations to an accurate representation of what is physically present in the estuary due to limited data quality or coverage. It is important to remember suitability modelling is not meant to precisely identify the perfect location for shellfish restoration, rather its purpose is to conduct compatibility screening to assist in guiding and prioritising candidate sites for further field validation and verification.

Numerous HSMs or RSMs have been constructed to guide fishery production, aquaculture and restoration of shellfish species over the past 50 plus years (Theuerkauf and Lipcius, 2016; Jossart *et al.*, 2020; Lester *et al.*, 2020). These efforts have largely been concentrated in North America (Soniati and Brody, 1988; Barnes *et al.*, 2007; Beseres Pollack *et al.*, 2012), and to a lesser extent in Asia (Chowdhury *et al.*, 2019) and Europe (Elsäßer *et al.*, 2013) and have only recently been applied in the Oceania region (Howie *et al.*, *In Prep*). However, these models vary due to local and unique conditions of the study area, the available data and implementation approach. As a result of non-standardized approaches to developing suitability models, modelled outputs are generally not comparable among locations, possibly resulting in differing outcomes and success across restoration projects.

### Marine spatial planning & restoration suitability modelling

The process for using RSMs to locate habitat restoration projects aligns closely with the marine spatial planning (MSP) process, and, indeed, can be incorporated into a broader MSP process if timelines and objectives align. MSP is a public, stakeholder-driven process of analysing and allocating the spatial and temporal distribution of human activities in marine areas to achieve ecological, economic, and social objectives that have been specified through a political process. MSP builds upon previous models of conservation planning by moving away from single-sector, single-objective considerations to meet a variety of socioeconomic and ecological objectives (UNESCO-IOC 2021). Similarly, RSMs go beyond the previous model where identifying habitat suitability is the only objective, to a process that can incorporate considerations on social parameters, including stakeholder preferences, conflicts and compatibilities with existing or planned human uses and/or habitats, and in some cases, economic outcomes. Akin to a MSP process, the process for RSM is driven by stakeholder engagement at multiple stages, best-available science and data on a wide variety of parameters, and, ideally, incorporates performance monitoring and evaluation metrics.

The push for a standardised approach has come from the recent investment in upscaling shellfish reef restoration in Australia. This scaling endeavour resulted in the need to for many restoration suitability models to run in parallel, emphasising the requirement for a standardised approach ensuring compatibility in the process among restoration locations. At a global scale, the UN Decade on Ecosystem Restoration will undoubtedly lead to an increase in the delivery of restoration projects, therefore there is a need for documentation on good practices in spatial planning for restoration. This manual outlines the global guidelines, good practices, and logical steps to construct a restoration suitability model to assist in selecting a suitable site for shellfish reef restoration. This manual outlines the steps and processes in such a way that users of ArcMap and ArcGIS Pro will be able to follow. Whilst other GIS software packages are not the target software of this manual, the fundamental spatial analysis workflow involving similar steps and model-building approach should be applicable in all packages.

This manual assumes basic familiarity with ArcMap/ArcGIS Pro vector and raster data formats, but is intended for users who have limited experience in raster modelling and analysis.

## Methodology

### 1. DEFINING ECOLOGICAL REFERENCE ECOSYSTEM AND UNDERSTANDING DRIVERS TO DISAPPEARANCE

Ecological restoration aims to create a self-sustaining ecosystem, that in time, closely resembles natural conditions and is resilient to perturbations (Gann *et al.*, 2019). The success of restoration projects relies on two major elements: having clear and realistic goals and objectives for restoration (Baggett *et al.*, 2014; Ehrenfeld, 2000; Hobbs and Harris, 2001; Gann *et al.* 2019; McDonald *et al.*, 2016) and having reference models for a range of restoration approaches and techniques that could feasibly lead to the recovery of the target ecosystem.

Where possible, restoration projects should employ the use of natural reference sites as a tool for measuring and assessing restoration success. Natural reference sites represent the fundamental conditions of the ecosystem undergoing ecological restoration, but have not been affected by degradation. It is likely that restoration sites will initially vary significantly compared to reference sites, however, assuming successful restoration and given time for recovery, the restoration and reference sites should become increasingly similar in terms of composition and function. In the absence of a natural reference site, a theoretical reference ecosystem can be developed as a guideline. A broad set of six ecological attributes underpinning theoretical reference systems, which are independent of species or ecosystem being restored, have been previously recommended (Table 1; Gann *et al.*, 2019; McDonald *et al.*, 2016). From this theoretical framework, the specifics of reference system can be developed through measurable indicators and interim conditions based on the knowledge of remaining natural populations, information on past conditions and modelling of future conditions (Society for Ecological Restoration, 2004). A reference ecosystem or model helps guide the project



Figure 4: Native flat oyster (*Ostrea angasi*) reef. Credit: Chris Gillies

design, selection of sites, set ecological targets and supports development of monitoring plans (Gann *et al.*, 2019). A reference ecosystem or model describes what is known about the ecosystem's ecological and physical characteristics (see Gillies *et al.*, (2017) for a shellfish example of a modelled ecosystem) and can be considered analogous to a builder obtaining the detailed engineering plans required to replicate an existing house (Fitzsimons *et al.*, 2020).

Table 1. Description of six key ecological attributes adapted from Gann *et al.* (2019); McDonald *et al.* (2016).

Ecological Attribute	Description
Absence of threats	Direct threats are absent at the restored site (e.g., over-utilization, contamination, invasive species)
Physical conditions	The restored site has the physical and chemical environmental conditions required to sustain the target species
Species composition	Appropriate native species are present at the restored site, while undesirable ones are absent
Structural diversity	The restored site has diversity within the demography of the desired species, wider trophic levels and associated vegetation
Ecosystem function	The restored site has appropriate levels of growth and productivity, nutrient cycling, decomposition, species interactions and disturbance rates
External changes	The restored site is appropriately integrated into the wider landscape and aquatic context through abiotic and biotic flows and exchanges

The initial stages of developing a habitat or restoration suitability model, involves understanding the geographic focus and scope of proposed restoration activities. It is crucial to understand the factors that led to initial shellfish decline in the region, and assess any parameters currently limiting the natural recovery, as each of these may affect how the restoration project suitability model is approached.

An assessment of the reversibility of parameters causing degradation is key to any restoration planning process. An ideal candidate for shellfish reef restoration would be an area where initial drivers for shellfish decline have subsided, and where substrate availability is limiting the natural recovery of the reefs, or where unsuitable environmental conditions exist (that may be remediated and their causes corrected or mitigated as part of the restoration activities). Estuaries which are still experiencing substantial anthropogenic or other stressors (i.e., limiting natural recovery), may require additional parameters to be considered in the modelling process or should be reconsidered altogether. Where broader intransigent environmental conditions exist that cannot be remediated, nor causes mitigated, the suitability of the site for restoring shellfish reefs may be reduced and the site rejected. Some examples of stressors that may still be present and limiting recovery may include wild fishing pressures (Breitburg *et al.*, 2000) or predation (limiting natural recruitment to existing structures i.e. Esquivel-Muelbert *et al.*, (2022)). Parameters such as these may either be overcome by the consideration of these parameters in the restoration suitability model, or these limitations may be addressed post-modelling in the design and management of the reef restoration project.

## 2. PLANNING THE MODELLING APPROACH

### 2.1 Developing project objectives and identifying specific area of interest to restore

It is essential to define the objectives of the restoration project (e.g., population recovery, habitat enhancement), as the objectives will define what parameters are relevant to include within the RSM. Defining project objectives is an important stage where key stakeholders can be involved to shape a common or shared vision for the restoration project, and create buy-in for developing an RSM to serve as a data driven decision support tool. Engaging stakeholders in the early stages of objective setting can pave the way for setting specific parameters and siting criteria as described in the following sections. Typical project objectives will include maximizing the survival of the focal species while minimizing conflicts with existing uses or existing ecosystems in the areas of interest. However, some projects may also have an objective to optimise ecosystem services (e.g., water filtration, coastal protection, or fisheries enhancement), in which case additional data parameters (or differing combinations of parameters) will be necessary (See Table 5 (page 54) for some ideas).

In establishing project objectives, it is advised that the SMART (Specific, Measurable, Attainable, Relevant and Timely) objectives framework is utilised (Skidmore *et al.*, 2012). This should include establishing target project deliverables based on an understanding of what is technically feasible, economically viable and socially acceptable. The setting of SMART project objectives enables tracking and evaluation of overall project progress and effectiveness through application of objectives that test outcomes (Skidmore *et al.*, 2012; Angelopoulos, Cowx and Buijse, 2017).

### 2.2 Selecting relevant parameters

For shellfish, the availability of suitable hard substrate for attachment, food availability, water quality parameters and the magnitude of top-down control by predators are all parameters that can influence reef development and persistence (Table 2).

Parameters included in RSMs broadly include chemical and physical (e.g., water quality, current speed, bathymetry), ecological (e.g., habitat proximity and presence/absence data), socioeconomic (e.g., proximity to aquaculture sites, fishing areas, or marine infrastructure) considerations. RSMs also use existing regulatory boundaries (e.g., marine protected areas) to ensure restoration efforts do not overlap with sensitive habitats. Selections of parameters to include in each suitability model may depend on local unique

Table 2. Frequency of parameter use from 16 key publications on habitat suitability models for the restoration of oyster reefs. Adapted from Theuerkauf and Lipcius (2016).

Parameter	Frequency of use
Salinity	15
Bottom type/substrate	9
Water depth	9
Water temperature	9
Dissolved oxygen	8
Turbidity	6
Food availability/Chlorophyll a	5
Disease	4
Predator intensity	3
Freshet frequency (rushes of freshwater)	3
Oyster abundance	2
Fouling organisms	1
pH	2
Water flow	2
Sedimentary environment	1

References: (Cake, 1983; Brown and Hartwick, 1988; Soniat and Brody, 1988; Battista, 1999; Barnes *et al.*, 2007; Starke, Levinton and Doall, 2011; Beseres Pollack *et al.*, 2012; Cho *et al.*, 2012; Soniat *et al.*, 2013; Swannack, Reif and Soniat, 2014; Linhoss, Camacho and Ashby, 2016; Theuerkauf and Lipcius, 2016; McFarland and Hare, 2018; Puckett *et al.*, 2018; Chowdhury *et al.*, 2019; Aslam, Siddiqui and Kazmi, 2020).

conditions, data availability and specific restoration goals and can be informed by expert and stakeholder opinion.

The initial process of site and parameter assessment will assist in identifying data gaps around key parameters that should be included in the analysis. In the case of missing data, there may be scope to collect or create spatial data; for example field campaigns to collect water quality data or digitizing marine infrastructure from satellite imagery can act as supplemental data for areas lacking samples or to prioritize future sampling efforts. In some cases, 'surrogate' or proxy parameters may also be used as a substitute for unavailable data parameters, where parameters are closely correlated (e.g., depth can be used as a surrogate/proxy for dissolved oxygen if the correlative relationship is known).

The concurrent step to parameter assessment is to consider how each data set will be factored into the analysis. Particularly, if the data vary across the project area as categorical or quantitative data, a decision as to how this information will be classified to inform restoration site selection must be made. Modelers will need to consider the format that this spatial data is in, as well as how this data may need to be edited or amended to be meaningful to analysis (please see more information in following sections).

## 2.3 Assessing data availability and sources

One of the most time-consuming aspects of habitat or restoration suitability modelling is acquiring and evaluating spatial data. Identifying potential datasets and sourcing from data providers can be a very lengthy process, and may still result in the procurement of an unsuitable spatial dataset in terms of resolution, format, or currency. For example, when the data set was collected in relation to when the RSM is being implemented – seagrass extent collected in 2010 but modelling undertaken in 2022. Ideally, spatial data included within an RSM will be of reasonably consistent spatial resolution and data quality.

It is vital that each incoming dataset is assessed for quality assurance and quality control.

**Quality assurance** refers to processes or methods to help prevent errors being introduced into the data (e.g., consider how data was collected, how error may have been introduced).

**Quality control** refers to processes or tools used to identify any errors that are already in the dataset (e.g., the ArcGIS Check Geometry tool will generate a report of the geometry problems in a feature class).

If sub-optimal quality data is included in the model, it is important to communicate this with the broader project team as a limitation or caveat of the final model output. The inclusion of an unsuitable or low-quality spatial dataset will affect the accuracy of the final suitability model, and ultimately may not provide an appropriate representation of the suitability of a site for restoration activities.

If datasets are sub-optimal, but still important to include in the model or site selection process – there may be creative ways around this. For example, inadequate water quality data (e.g., single point measurements of dissolved oxygen) may be inappropriate for inclusion, as would incomplete data sets (e.g., features representing only a portion of the study area). In some cases, local system experts may be able to develop semi-quantitative or qualitative spatial datasets from limited input data (e.g., defining salinity zones within an estuary from limited point data vs. interpolation) allowing for limited use of data within the model. There is also the option of running two models – one with the sub-optimal data and without the data to determine the impact of the data on outcomes.

If datasets are deemed to be unfit for inclusion, and/or no datasets are available for a specific parameter, it may be possible to verify that parameter during field validation exercises. Important considerations for determining the appropriateness of a data set to be included in the model consist of given parameter

### Potential data sources

- State and local government programs
- Private sector
- University/academic research projects
- Non-Government Organisations
- Industry
- Satellite imagery
- Historical documents
- Published scientific research papers

importance, spatial data resolution, frequency of data collection, and data format. Knowing the right questions to ask potential data providers can save considerable time and effort during the acquisition phase of the process.

Project teams are recommended to allow ample time in their work plans to reach out to data providers, acquire and evaluate spatial data. This step can often take more than two months, particularly where data sharing agreements may need to be drawn up.

Table 3. Potential spatial data sources for Australian coasts and estuaries.

Examples of data sources in Australia	
Data types:	Bathymetry – varies by state, <a href="#">ELVIS</a> a good place to start and it is recommended to get in contact with local councils. Water quality – Availability dependent on specific waterway, contact local councils. Habitat – <a href="#">Seamap Australia</a> , Waterway uses – Roads and Maritime Services (NSW and other State equivalents) and/or local port authorities.
Spatial data portals:	<a href="#">AODN</a> , <a href="#">ELVIS</a> , <a href="#">National Maps</a> , <a href="#">SEED Portal</a> (New South Wales), <a href="#">NatureMaps</a> (South Australia), <a href="#">DataShare</a> (Victoria), <a href="#">LISTmap</a> (Tasmania) etc.

## 2.4 Developing parameter criteria and weights

A range of relevant data parameters are brought together within a restoration suitability model to identify suitable locations for shellfish reef restoration. It is important to consider the suite of parameters to be integrated within an RSM as they relate to the needs of specific study systems (e.g., salinity, depth), as well as the individual parameter-level criteria used to define suitability (e.g., suitable vs unsuitable salinity ranges for restorations targets species). A sample table of data parameters, their associated considerations, parameter criteria and weights, can be found in [Appendix A](#).

Depending on the restoration goals of the project, incorporating restoration practitioners and relevant stakeholders into the RSM planning (parameter selection, criteria and weighting) can be a valuable opportunity to incorporate local knowledge into restoration modelling and to secure buy-in to the model and subsequent support for restoration planning.

### 2.4.1 Parameter criteria

Parameter criteria are applied to datasets at the individual parameter-level to define suitability scores related to each parameter. Within a suitability model, there are generally two key types of data, each of which are treated differently when applying suitability scores and weightings: gradient and binary data parameters.

Binary data parameters are primarily used to indicate areas of exclusion from suitability for restoration (sometimes referred to as an 'exclusion analysis'), and the suitability scores are applied on a scale of 0 - 1,

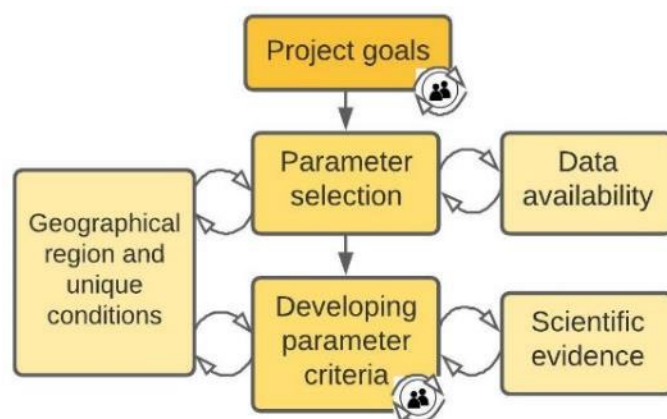


Figure 5. Schematic diagram indicating important considerations that should be taken into account when selecting parameters and constructing parameter criteria.

where 0 indicates unsuitable conditions and 1 indicates no effect on suitability. For example, areas corresponding with vessel navigation (i.e., mooring areas or boating channels) are unsuitable for construction of a restored shellfish reef, however spaces outside this exclusion area are deemed suitable – based on this one criteria – as they are outside of the navigation exclusion zone– these areas would receive a suitability score of 1 as the model requires them to have no effect on the site suitability when combining parameters.

Gradient data parameters (e.g., water quality or bathymetry) are delineated with the application of continuous or categorical suitability scores. These relationships are typically derived from available scientific evidence and literature (e.g., studies of growth or mortality of oysters related to salinity ranges). Here suitability scores are applied on a scale of 0 – 4, where 0 indicates unsuitable conditions and 4 indicates optimal conditions. Whilst the scale used is relatively arbitrary, we have found that a scale of 0 - 4 provides sufficient differentiation between suitability scores, while also being intuitive. Other studies have varied scales used for suitability scoring (i.e., 0 - 1 or 0 - 10), all of which are acceptable. Whilst it is largely inconsequential which scoring system is used, we recommend selecting a scoring system that creates contrast amongst parameters and increases the interpretability of model outputs. Gradient data parameters may also have parameter weightings applied to them and must be reclassified to the same suitability scale as the final model, prior to calculation. Binary data parameters typically will be on a scale of 0-1, where 0 indicates unsuitable areas and is excluded, and 1 indicates that the area is not suitable but beyond these exclusion zones, there is no physical or ecological benefit to shellfish being restored there.

#### 2.4.2 Parameter weights

Weights can be assigned to individual parameters combined within an RSM, either as equally weighted parameters in the model (i.e., all parameters have equal importance) or relative weighting based on expert input regarding the importance of various parameters in defining suitable areas for restoration. For example, in a simple RSM that includes salinity, bottom type, and depth, equal weightings of 33.33% can be assigned to all parameters indicating equivalent importance of all three parameters in defining suitability within the RSM (i.e.,  $33.33\% \times 3 \text{ parameters} = 100\%$ ). Conversely, if an individual parameter is known to be a major driver of restoration suitability, it can be assigned a higher weight relative to other parameters (e.g., 50% for salinity, 25% for bottom type, and 25% for depth) resulting in a greater effect of salinity in driving the overall results of the RSM.

Parameter weightings are best incorporated when there is a multitude of gradient parameters incorporated into the model, each of which are driving spatial patterns of suitability. Ideally, parameter weights should be accurate representations of the relative importance of model parameters. However, there is often little information describing how each parameter influences the restoration success of a focal restoration species. It is good practice to counteract this lack of information, by engaging a group of expert stakeholders to help determine weights of each gradient model parameter – or if this is not feasible equal weightings may be applied across all parameters.

#### Determining weights

Where expert stakeholders are required to assist in defining parameter weights, care must be taken to select suitable stakeholders with exceptional knowledge of the target species biology, restoration ecology, or the targeted region in which restoration will take place. Look towards researchers who have published work on the biology or ecology of your target species, local fishery or coastal habitat managers, restoration practitioners, and shellfish aquaculture practitioners operating in (or nearby) the target region.

In determining parameter weights with a group of stakeholders, consider having either an in-person or online workshop, and using an online survey to collect and collate responses (e.g., Survey123, Google Forms or SurveyMonkey)



When constructing the survey, it is good practice to request respondents to assess the relative importance of parameters by scoring individual parameters on a linear scale. It is also important to provide ample introduction and detail on how to interpret the scale, and the purpose of this exercise. For example, the survey could ask respondents to identify whether each parameter is worthy of inclusion in the model, and then assess the relative importance of these parameters on a linear scale from 1 (least importance) to 10 (high importance).

Further discussions can be facilitated based on the results of this survey, particularly where there are wide discrepancies across respondents. Depending on the results from the survey and workshops, resulting weighting scores should be discussed by the project team before deciding to incorporate the final weights in the calculation of the RSM.

### Sensitivity analyses

Sensitivity analyses provide an opportunity to assess the relative effect of individual parameters and the effect of parameter weightings on driving RSM results (see Puckett et al., 2018 for an example of this).

Typically, sensitivity analyses assess the relative effect of individual parameters by using a 'leave-one-out' approach, where a single individual parameter (typically the highest weighted parameter(s)) are removed from the RSM and the suitability scores are re-calculated. On a cell-by-cell basis, the resultant change in suitability scores is typically calculated and compared amongst parameters. Those parameters that result in the largest change in RSM scores are considered the most sensitive parameters and predominant model drivers. These analyses can be valuable to determine which parameters have the greatest net effect on RSM results. Additionally, these analyses can highlight where strategic investments in improving data quality would yield improvements in the RSM.

Sensitivity analyses to assess the relative effect of parameter weightings typically compare weighted vs. unweighted RSMs. For example, an RSM that includes 10 parameters may have weightings assigned to each individual parameter as the result of an expert stakeholder group activity. On a cell-by-cell basis, the weighted model can be compared quantitatively to the unweighted model (e.g., 10 parameters each with 10% weightings = 100% total) to determine the effect of weightings on RSM scores. Evaluation of weighted vs. unweighted models can also be conducted qualitatively by comparing map outputs from the two.

### 2.4.3 Guidelines for selecting parameter criteria and weighting parameters

When choosing data criteria and weighting parameters, there are several parameters to consider, including:

#### Scientific evidence

Criteria and weights for data parameters should be based on scientific evidence (i.e. in published literature) and/or expert opinion. Good options are either undertaking or utilising existing literature reviews to identify reference systems (i.e. Gillies et al., (2017) McAfee et al., (2020)). Engagement with experts from early on will help define essential and 'nice to have' data parameters. These should be applicable to the target species, geographical region, proposed restoration technique, and restoration objectives as much as possible.

## Geographical and restoration goals

Data parameters selected for inclusion and the criteria developed should be relevant to the local area and restoration objective. Both should reflect local stakeholder priorities, project feasibility constraints, as well as local conditions and unique features that may impact the project.

## Stakeholder consultation

Consultation with central stakeholders should occur early in the process, as this will impact types of data needing to be collected. For example, fishery stakeholders may wish to avoid having shellfish reefs constructed in key fishing areas, particularly if fishing gear could damage, or be damaged by the on-ground works associated with restoration activities (e.g., constructed reefs). Alternatively, some fishery stakeholders might view nearby shellfish reefs as having a habitat enhancement value and may not identify any conflicts.

It is important to map out the network of appropriate stakeholders to engage and assess when it is appropriate to engage different stakeholders at different stages throughout the modelling process. This can be valuable to assuage any community concerns (from restoration activities), to identify key conflicts in the area, as well as to secure buy-in and support for the project. Once the model has been constructed, taking their concerns into account, it is good practice to run model outputs by local stakeholders again. This ongoing relationship with local stakeholders throughout the course of the project builds trust with community groups and improves transparency and trust of modelling results. This can be critical when it comes to actual project implementation, transitioning from modelling to restoration activities.

Whilst stakeholder consultations are a great way to address community concerns surrounding the project, conversations with community groups can also provide valuable insight into the system regarding local and unique conditions that are not necessarily captured by the data fed into the model.

See [Appendix B](#) for suggested guidance for consulting with professional and community stakeholders over the RSM.

## Project feasibility

Data parameters should reflect any project-level and/or logistical constraints around building the reefs. For example, some projects may opt to restrict building reefs to areas within a certain distance from shore, if there are complications with materials transport, or when it comes to monitoring reef development, this can become more hazardous to divers at depths below -15 m.

## Local conditions

Some parameters may not be applicable to every project, in which case they may be excluded from the analysis. For example, some estuaries that are very well mixed and may not experience substantial spatial variation in dissolved oxygen throughout the area, in which case, it may not be necessary to include this as a parameter in the analysis.

## Unique local features

The sample table example ([Appendix A](#)) does not contain a complete list of every parameter that may be important to a given geography. It may be necessary to include other information on maritime infrastructure or zones, major habitat/wildlife features, or other considerations that are unique to the area, especially if they will have a direct impact on the project's objectives. For instance, in

### Stakeholder engagement strategies

- Stakeholder workshops (with local residents and recreational users)
- Distributing survey to community
- Meetings with local council and waterway managers
- Holding Q/A sessions
- Workshops with community groups (e.g. local fishers and birdwatching groups)



Figure 6. Spotted Handfish (*Brachionichthys hirsutus*).  
Credit: Handfish Conservation project.

south-east Tasmania, Australia, vulnerable populations of Handfish species (Figure 6) were identified and resulted in areas being excluded from RSM analyses.

## 3. DATA ORGANISATION AND PREPARATION

Before constructing the model, it is vital to make sure that all datasets are in a consistent format, coordinate system, extent and resolution. This section outlines steps to be taken to ensure that datasets can be overlaid. Having data organized in a structured way will also help keep track of files, of which there will be many.

### 3.1 Data organisation

#### Data organisation

Prior to any data processing, a best practice is to organise your file structure in ArcCatalog. This makes it much easier to find each version of a data file, should any amendments or modifications need to be made.

**Note:** It is recommended that any rasters created throughout the construction of the suitability model are stored in file geodatabases.

The following file structure is recommended:

**Info** - This folder may contain information about the study region important to the project. e.g. estuary management plans.

**Raw\_data** - This folder contains all of the original input data, in the same format that was received from the data provider.

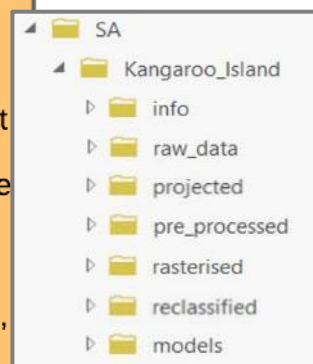
**Projected** - This folder contains the datasets that have been re-projected to the coordinate system chosen for the project (see Section 3.3). All datasets in this folder should have the same coordinate system.

**Pre\_processed** - This folder contains datasets that have been projected to the correct coordinate system and have had additional geoprocessing tools applied, e.g. buffers around seagrass patches.

**Rasterised** - This folder contains all of the input rasters after they have been converted from vector data, or after they have been resampled and/or snapped to the reference raster (see Section 4.2).

**Reclassified** - This folder contains all of the input rasters after they have been classified according to their parameter criteria.

**Models** - This folder stores different versions of the habitat or restoration suitability models.



### 3.2 Spatially defining an area of interest

Defining the specific area in which the analysis will take place is an important step to take early in the data preparation process, requiring input from end-users of the RSM in its definition. This will help to determine which features to include and will be useful later in the process when working with rasters. Prior to defining the area of interest in shapefile or polygon form, be sure to review [Section 3.3](#) to select an appropriate coordinate system and projection.

#### Shoreline datasets

It is good practice to obtain a high-resolution shoreline dataset specific to the region in the data collection step, to create a spatial layer for the specific area of interest. However, where no shoreline data is available, this can either be extracted from bathymetric datasets (from the mean high water mark or similar), or extracted from global shoreline datasets (e.g. the Global Self-consistent, Hierarchical, High-resolution Geography Database) ([GSHHG](#)).

The area of interest for a given project may either be a specific embayment or estuary, or a stretch of coastline. For example, in Oyster Harbour, Western Australia (Australia), the entirety of the bay is considered the area of interest, but it is still necessary to define the boundary where the Bay meets the ocean, and how far into various inlets the model should extend (Figure 7). Comparatively, in South Australia near Adelaide, the area of interest was along a fairly linear stretch of coastline. In this case, to define the area of interest, a buffer was extended outwards from the shoreline to define extent (Figure 7).



Figure 7. Defining area of interest for Oyster Harbour, WA (left) and along the Adelaide coastline, SA (right) in Australia.

The main purpose of using a shoreline polygon or spatial base layer to define the area of interest is to be able to limit the extent of spatial analyses conducted when working with raster formats. If the shoreline file is in polygon or polyline format, these will eventually be converted into raster format. There are three ways to create a spatial base layer, as described below in ESRI workflows:

### From polygon

When creating a spatial base layer from a polygon shoreline dataset, the first step is often to edit the vertices of the polygon to define the specific area of interest. First, use the Interactive Selection Tool, and drag the mouse to select the area of interest. Right click the shoreline layer in the Table of Contents (TOC) and choose Data>Export Data to save the selected features to a new dataset for editing.

Turn on the editing tool (Customize->Toolbars->Editor) (Figure 8). Select layer in editor to edit. Generally, the two most useful tools in reshaping polygon features, is using the Edit Vertices or Split tools. Use the Edit Vertices tool to remove extraneous vertices and add additional vertices to close off the boundaries of the area to create an outline of the study area. For more information on using the Edit Vertices tools, see [this link](#).

Split tool is a quick way to split a single polygon feature into two, using the select tool you can then delete the unwanted polygon. This is often useful for cutting off inlets or rivers to exclude from an AOI.

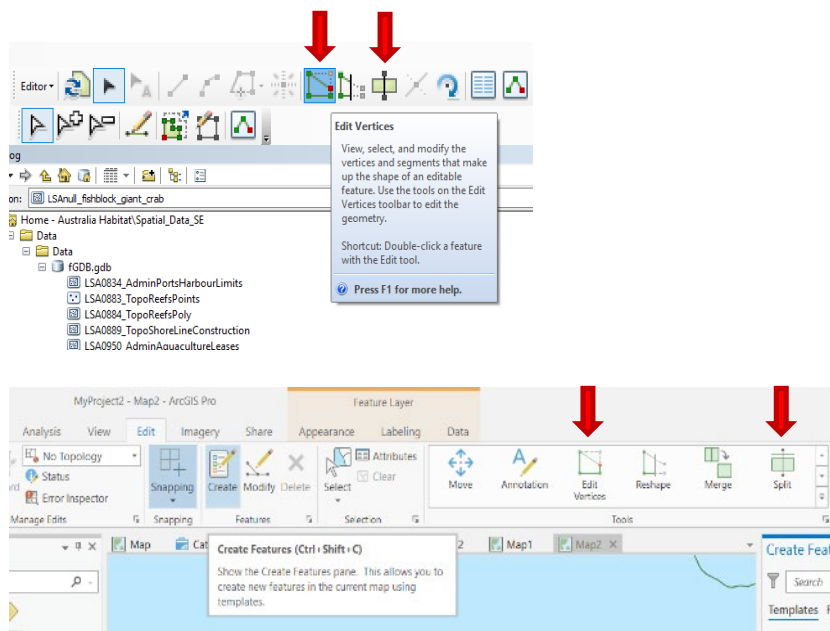


Figure 8. Editing Toolbar and Edit Vertices Tools in ArcMap (top) and ArcGIS Pro (bottom).

It is a best practice to save your edits often during an editing session in case of a software crash. Once the necessary features have been digitized, save the edits a final time and select Stop Editing from the Editing dropdown menu. For more information, see these links for [creating](#) and [editing features](#), and the [editing tutorial](#).

#### From polyline

If the geometry type was a polyline, rather than a polygon, the Polyline to Polygon tool (Data Management Tools > Features > Feature to Polygon) can be used. Once in polygon format, the above steps for polygon editing can be followed to define area of interest.

#### From bathymetric data

If you have bathymetric data (raster format) covering the AOI, a quick way to make a polygon feature of the area is to use the Reclassify tool to reclassify the raster (all grid values = 1), then convert the raster to a polygon.

Eventually, you will want to use the Raster to Polygon tool, to create a base raster layer to use in subsequent raster analyses ([Section 3.4.5](#)).

### 3.3 Choosing a coordinate system and projection

Coordinate systems determine how the data are located on the earth's surface, and a map's projection determines how the data and coordinate system are represented on a two-dimensional surface. Flattening the earth's three-dimensional surface distorts shape, scale, distance, direction, and area, and different map projections preserve these aspects to differing degrees (ESRI, 2022).

It is important to understand that there are two main types of coordinate systems (Figure 9): Geographic Coordinate System and Projected Coordinate System.

**Geographic Coordinate Systems (GCS):** is a reference framework that defines the locations of features on a model of the entire globe. It is spherical shaped and units are angular, often degrees.

**Projected Coordinate System (PCS):** contains a GCS, but converts the GCS into a flat surface, using a mathematical algorithm (differs between projections) and other parameters. Units are linear, often meters.

GCS is needed for data to know where precisely on earth's three-dimensional surface it is located. PCS is required to draw this data on a flat map.

Learn more about coordinate systems and projections [here](#).

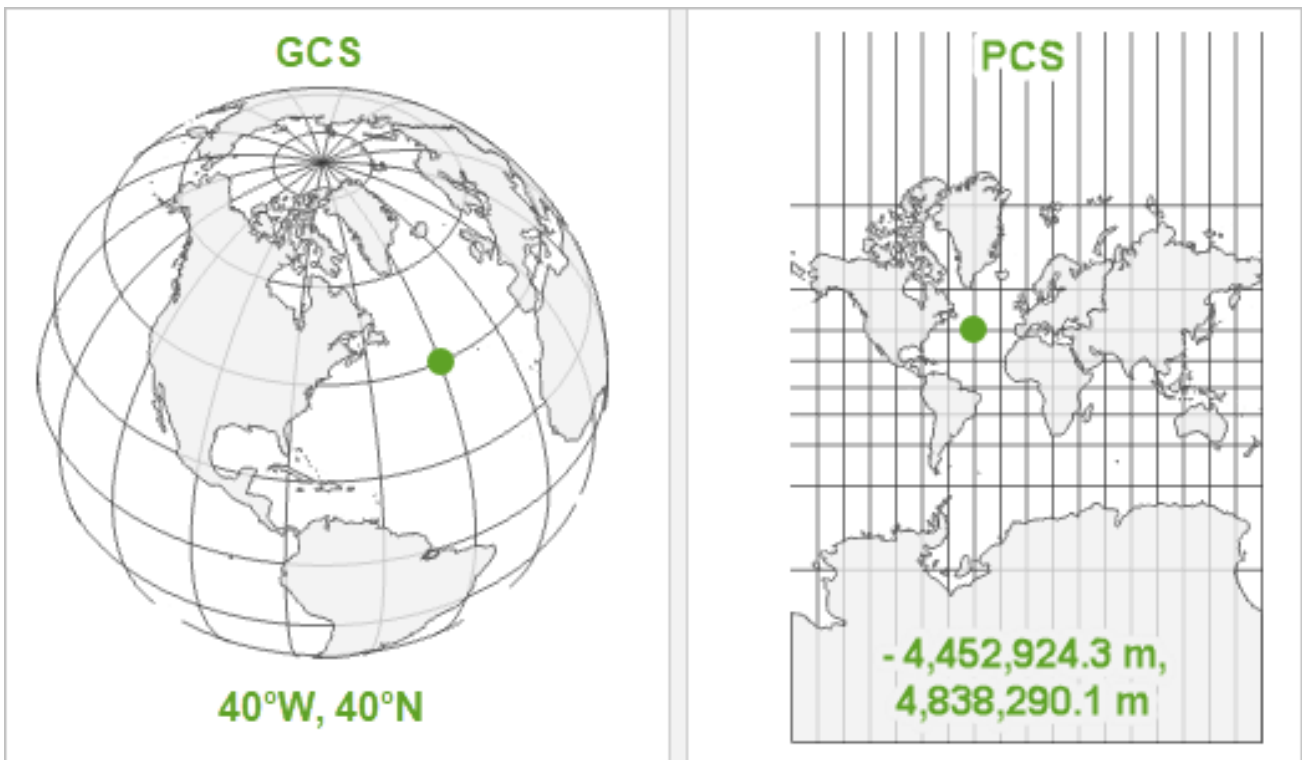


Figure 9. Comparison of Geographic and Projected Coordinate Systems.

Habitat suitability models often occur over relatively small areas, distortion is generally minimal, but it remains important to choose a projection that will be used consistently throughout the analysis.

There are numerous resources online to help determine which coordinate system is appropriate for a given location, such as [this article](#) and [this article](#), and the choice will often depend on project objectives.

Particularly for restoration suitability models, it is important to use a PCS (not GCS), as PCS allow for geoprocessing operations (e.g., buffer tool), which are vital for development of RSMs.

To view a summarized list of the coordinate systems used by all datasets, right click on the data frame, and choose the Coordinate System tabs (Figure 11). Once you have selected an appropriate coordinate system for the project, select it in the data frame properties and click "OK".

#### Selecting a coordinate system

A practical approach for choosing a coordinate system and projection for a suitability model is to identify the most common coordinate systems among the input data and choose the one that is most specific to the geographical area of interest (e.g., use a state-wide coordinate system, rather than a national coordinate system). There may also be a national guide indicating zones for different coordinate systems (i.e. Figure 10).

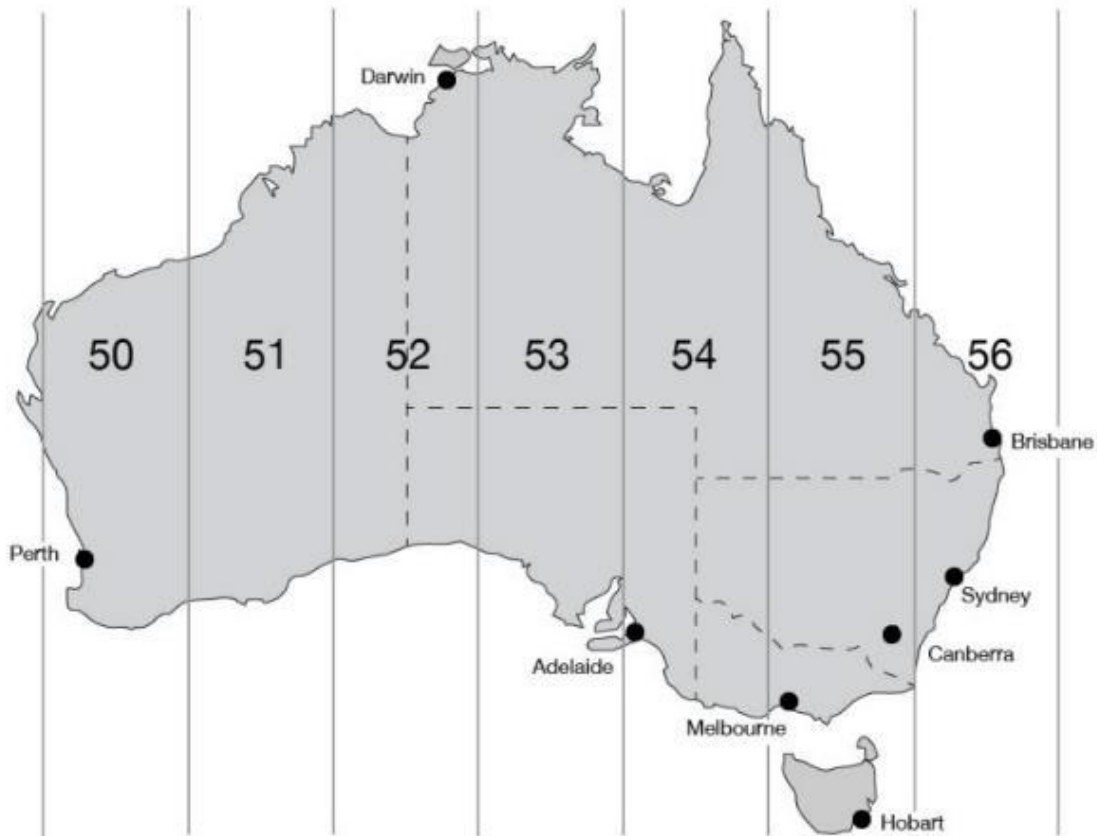


Figure 10. Example projected coordinate systems used in Australia. Map grid of Australia 2020 (MGA2020), showing grid zones. The projection is divided into eight equal zones across Australia. For example, Sydney falls within MGA zone 56.

### 3.3.1 Projecting data

For spatial datasets sourced for the project, it'll be necessary to project these based on the selected coordinate system.

*For vector data (i.e. point data, polylines or polygons):* Use the Project tool in the Data Management > Projections and Transformation toolbox.

*For raster data:* Use the Project Raster tool in the Data Management > Projections and Transformations > Raster toolbox.

To project large numbers of datasets with the same original coordinate system, choose the Batch function by right clicking on either of the tools (Figure 11). Alternatively, iterators can be used to semi-automate this process (Check these resources for information on using iterators: [this information page](#) and [instructional video](#)).



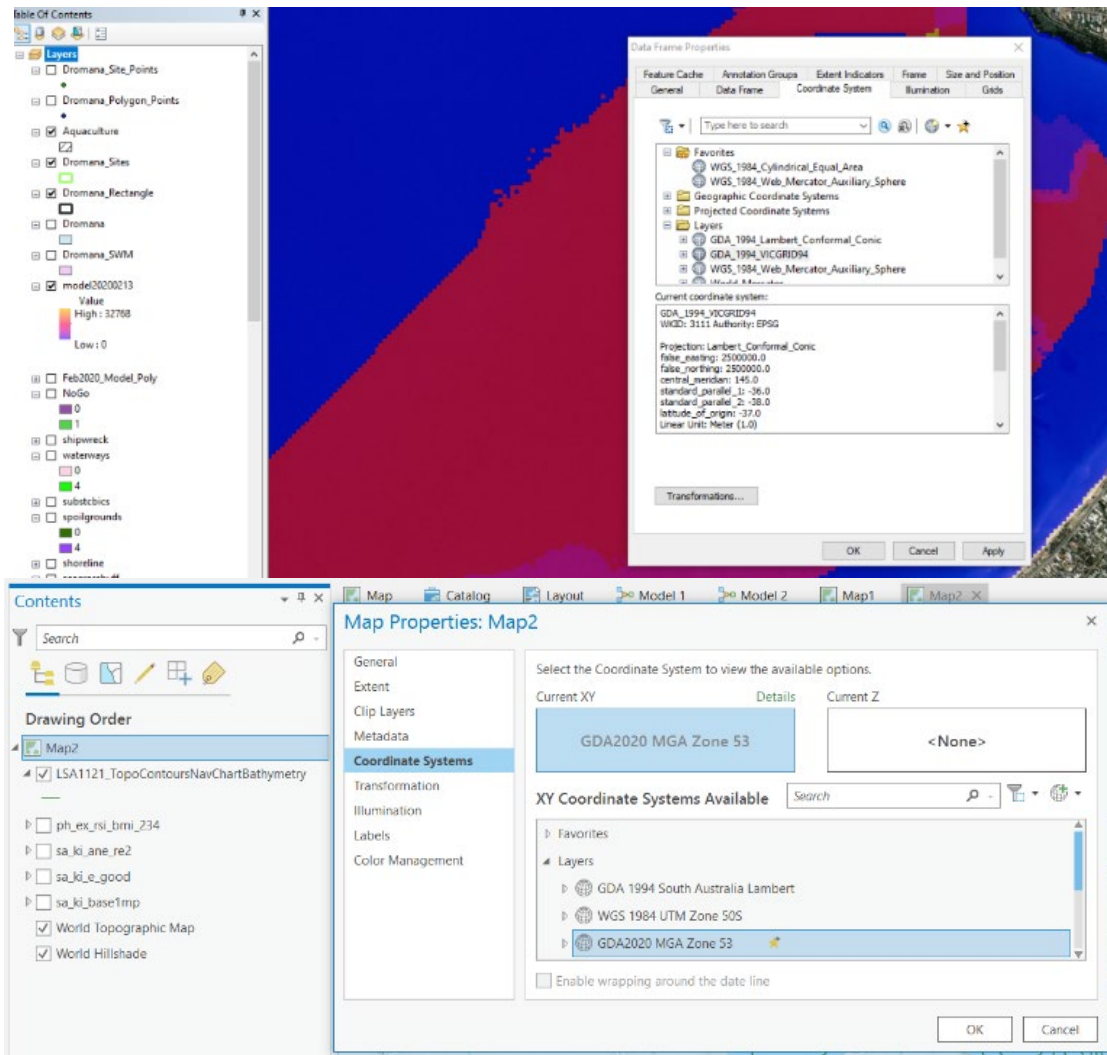


Figure 11. Top (ArcMap): right click on Layers at the top of the Table of Contents and choose Properties. Bottom (ArcGIS Pro): Right click the Map you are working on in TOC and select Map Properties.

### 3.4 Data manipulation – creating and converting spatial vector data

Ideally, data providers will deliver datasets that are in formats that can be readily analysed in ArcMap or ArcGIS Pro and incorporated into the RSM. These formats include vector data (shapefiles or feature classes, sometimes stored in a geodatabase), and raster data. (Visit [this link](#) for a review of data formats). However, it may be necessary to convert or modify input data, or even create new data, to ensure compatibility. Some of the data conversion or creation tasks commonly used in suitability modelling are explained below in Figure 12.

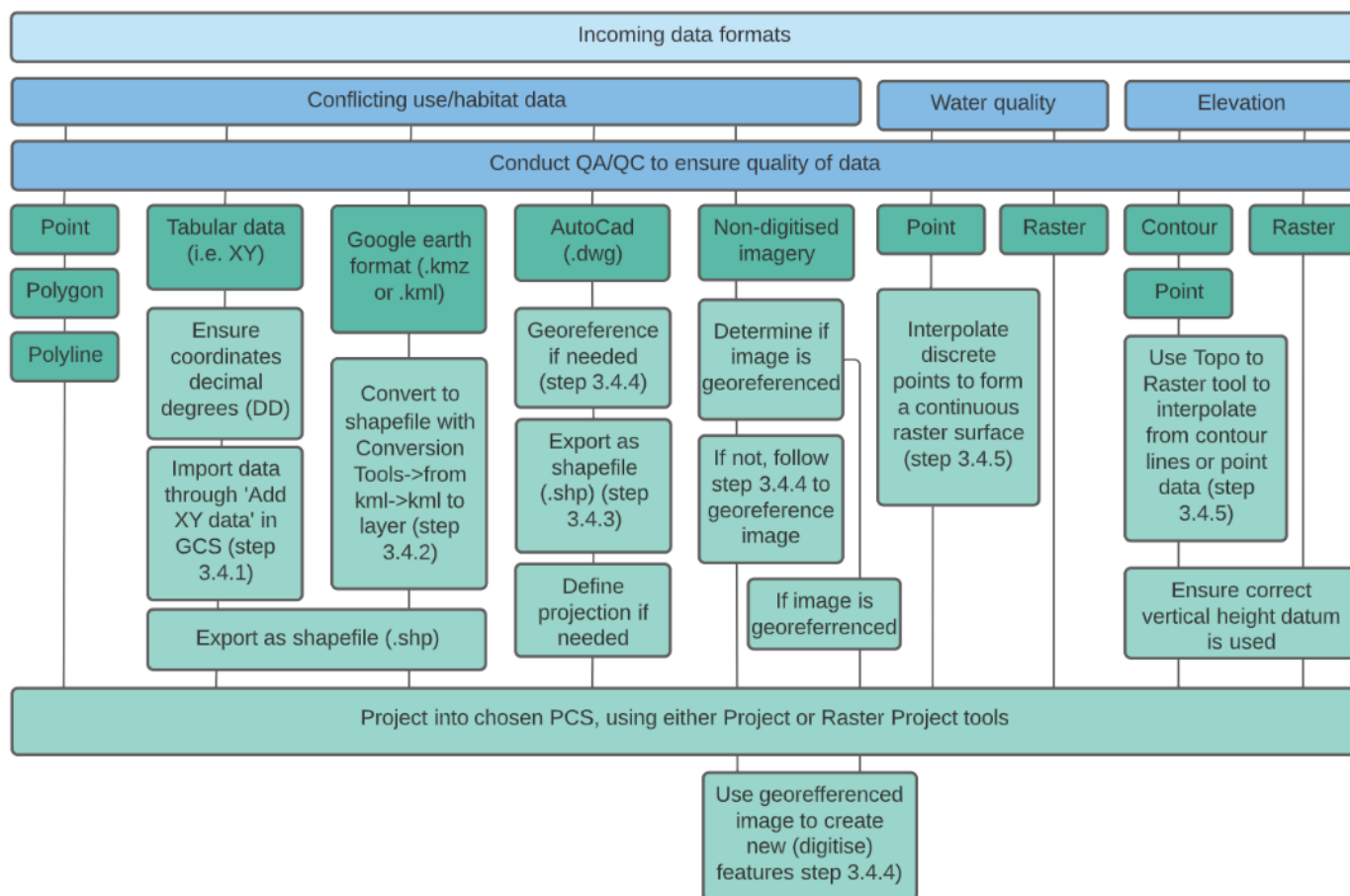


Figure 12. Schematic diagram on how to format a diversity on incoming GIS datasets to make suitable for incorporation into a suitability model.

#### 3.4.1. Importing data from tables

If data are available in table form (e.g., .xlsx or .csv), they can easily be imported into ArcMap and converted to a shapefile if the latitude and longitude are present as fields. However, it may be necessary to prepare the input table so that it can be imported without error. First, ensure that your coordinates are in the format of decimal degrees. If they need to be converted from degrees, minutes, seconds, the following formula can be used:

$$DD = d + (\text{min}/60) + (\text{sec}/3600)$$

There are also some online conversion tools available to assist in coordinate conversions (e.g., [this conversion tool](#)), but if doing large batch conversions excel spreadsheets or R can also be useful and more efficient.

Make sure that latitudes south of the equator and west of the Prime Meridien are specified as negative.

Ensure that the column names are no longer than 13 characters, and that they do not contains spaces or special characters. It can often be helpful to convert a file to a .csv format as this tends to reduce import errors. It is best to add another column called 'ObjectID', which has a unique number for each row or data feature.

To import data, open a blank map document and select a geographic (not projected) coordinate system, such as WGS 1984, in layer properties (see Figure 11 above). Under the File drop-down menu, navigate to Add Data->Add XY data. Browse and select the .csv file that contains your data, and choose the fields to specify latitude and longitude, if they are not automatically populated.

Remember, latitude specifies the Y coordinate and longitude specifies the X coordinate.

	A	B	C	D	E	F	G	H	I
1	ObjectID	datapoint	lat	long	location_name	type	SRO	mean_SRO	n_SRO
2	1	1	-33.785	151.232	Castle_Cove	chla	no	2.77333333	3
3	2	1	-33.785	151.232	Castle_Cove	chla	yes	1.38	1
4	3	1	-33.785	151.232	Castle_Cove	DO	no	82.93333333	3
5	4	1	-33.785	151.232	Castle_Cove	DO	yes	101.3	1
6	5	1	-33.785	151.232	Castle_Cove	pH	no	7.87	3
7	6	1	-33.785	151.232	Castle_Cove	pH	yes	7.98	1
8	7	1	-33.785	151.232	Castle_Cove	sal	no	33.205	4
9	8	1	-33.785	151.232	Castle_Cove	sal	yes	30.65	1

Figure 13. Example of tabular data layout as a .csv file in excel, prior to importing into ArcMap. Note 'ObjectID' column and latitude/longitude coordinates are in decimal degrees. From this table, each column heading will become a column in the new attribute table once in ArcMap.

After the data have been imported, points should appear within the map file. Right click the layer in the Table of Contents and select Data->Export data and browse to the appropriate file location. This will allow you to create a shapefile from the imported table. After that, the data can be projected to the project's coordinate system.

For more on importing tabular data, [visit this link](#).

### 3.4.2. Converting from .kml or .kmz files

Google Earth data formats (.kml or .kmz files) can be converted for use in ArcMap/ArcGIS Pro using a built-in tool. In the Toolbox, navigate to Conversion Tools->from kml->kml to layer. Browse to select the input file and select the output file location. Once the file has been converted it can be projected to the project's coordinate system.

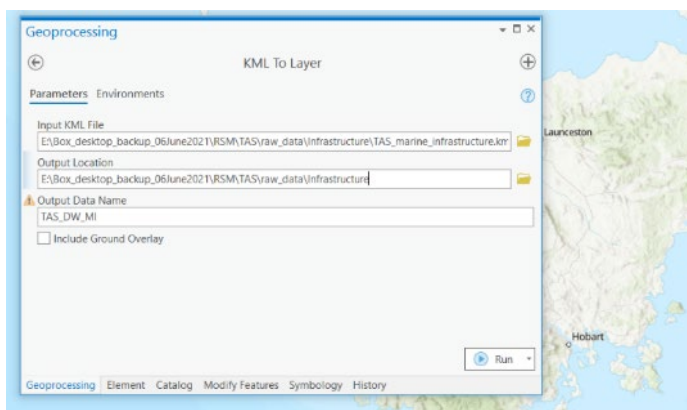


Figure 14. Example of converting from kml file to shapefile polygon.

### 3.4.3 Converting from AutoCad files

In some cases, data will be delivered in AutoCad format, which will be recognizable by the .dwg extension. AutoCAD data may need to be georeferenced (you will notice this if the shapefile does not appear on the map). If that is the case, follow the steps outlined in 3.4.4. so that the features align with known reference points. Once they do, they can be exported to a shapefile. Each AutoCad file is comprised of a group of layers, one from each geometry (Figure 15). Right click on the geometry that is depicted (for example, if they are points showing navigational aids, right click the point layer; these should have the symbology that you see on the map visible in the Table of Contents) and

- ▣ Port of Hastings - Nav Aids.dwg Group Layer
- ▣ Port of Hastings - Nav Aids.dwg Annotation
- ▣ Port of Hastings - Nav Aids.dwg Point
- <all other values>
- Cad Renderer
- Continuous, 255, 25
- Continuous, 73, 25
- Continuous, 201, 25
- Continuous, 3, 25
- Continuous, 10, 25
- Continuous, 5, 25
- Continuous, 2, 25
- Continuous, 7, 25
- Continuous, 1, 25
- DASHED, 7, 25
- DASHED, 71, 25
- Continuous, 253, 25
- Continuous, 195, 25
- Continuous, 71, 25
- ▣ Port of Hastings - Nav Aids.dwg Polyline
- ▣ Port of Hastings - Nav Aids.dwg Polygon
- ▣ Port of Hastings - Nav Aids.dwg MultiPatch

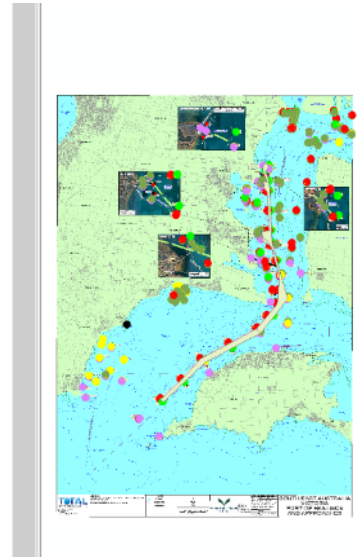


Figure 15. AutoCad files with a .dwg extension will have a group layer containing all geometries. To export the data to a shapefile, select the geometry type that can be seen on the map that corresponds with the symbology in the table of contents.

select Data -> Export Data and save as a shapefile. It may be necessary to assign the resulting shapefile a coordinate system (Data Management Tools -> Projections and Transformations -> Define Projection) if the coordinate system is unknown. If the files were accompanied by an existing map or chart, assign the projection system noted on the chart (this is often printed on the chart itself) and then project it to the coordinate system for the project.

Alternatively, once the AutoCad files have been georeferenced, they can be used as a template to create new features using the editing process described in the previous section.

### 3.4.4 Digitizing data from other imagery

Nautical charts and other maps can be rich sources of data, especially for features like navigational channels, mooring areas, or other delineations that may not be readily available as spatial data. Satellite imagery can also be used to digitize features that can be seen from aerial photos, such as the locations of piers, boat ramps, or other infrastructure (In the interest of time constraints – using Google earth to digitize these infrastructure features is recommended, where spatial resolution allows). Maps or charts can be used as a guide when digitizing these features manually, as long as they are in the correct format and they are georeferenced. If an image is georeferenced, it means that it contains information that ArcMap can use to assign a spatial location to the image in the map document. Images can be georeferenced if they are in one of the following formats: BIL, BIP, BMP, DAT, GIF, TIFF, ESRI GRID, IMG, JPEG, JPEG 2000, PNG. PDFs can be converted to TIFFs for georeferencing using the PDF to TIFF conversion tool (Conversion Tools->From PDF->PDF to TIFF).

In the first instance, determine if your image is georeferenced. This can be achieved by overlaying existing spatial data for features that are present in the image (e.g., navigational aid, shoreline) to see if they align with the image. Alternatively, a basemap can be added (File->Add Data -> Add Basemap) and compared to the image to assess whether they align.

Even if the image appears to be properly georeferenced, it may need to be re-projected into the project's coordinate system before creating any features based on it ([see Section 3.3.1](#)).

### Georeferencing

If the image is not georeferenced, enable the georeferencing toolbar (Customize->Toolbars->Georeferencing) and add the image to your map document. Once the georeferencing toolbar has appeared, the image to be georeferenced can be selected from the dropdown menu (see Figure 16). Some images, especially if they are

nautical charts, will list the coordinate system on the chart itself. If this is the case, change the coordinate system of the data frame to match that of the chart. If no coordinate system is apparent, it is often appropriate to choose a WGS 1984-based projected coordinate system such as “WGS\_1984\_Web\_Mercator\_Auxiliary\_Sphere” while georeferencing, as this, corresponds to the imagery in basemaps and Google Earth.

Find at least five spatially balanced locations (ideally more) on the image that you can use as control points. These should be points where the latitude and longitude at that point is known. Many maps have coordinate grids on the margins and/or graticule lines on the map which can be used to locate exact latitude/longitudes on the map. If these are not present, try to identify features on the image that are static in nature (e.g., headlands, docks, buildings, or other infrastructure) and locate those features in Google Earth imagery.

Hover the cursor over target feature in Google Earth to obtain coordinates from lower right corner of the screen. Once the reference point is known, select the icon to the right of the drop-down menu in the georeferencing toolbar, and then click on the first control point on the map. Enter the coordinates in the pop-up window. Then, repeat the steps for the second (and any subsequent) control points, before selecting “Update Georeferencing” from the Georeferencing drop-down menu. The image should now be adjusted to the correct location. Visit this [link](#) for more information on georeferencing in ArcMap.

Once the image has been georeferenced, it can now be used as a reference when creating features. Before proceeding, ensure that the image has been projected into the project coordinate system and that the Data Frame matches the coordinate system ([Section 3.3.1](#)).

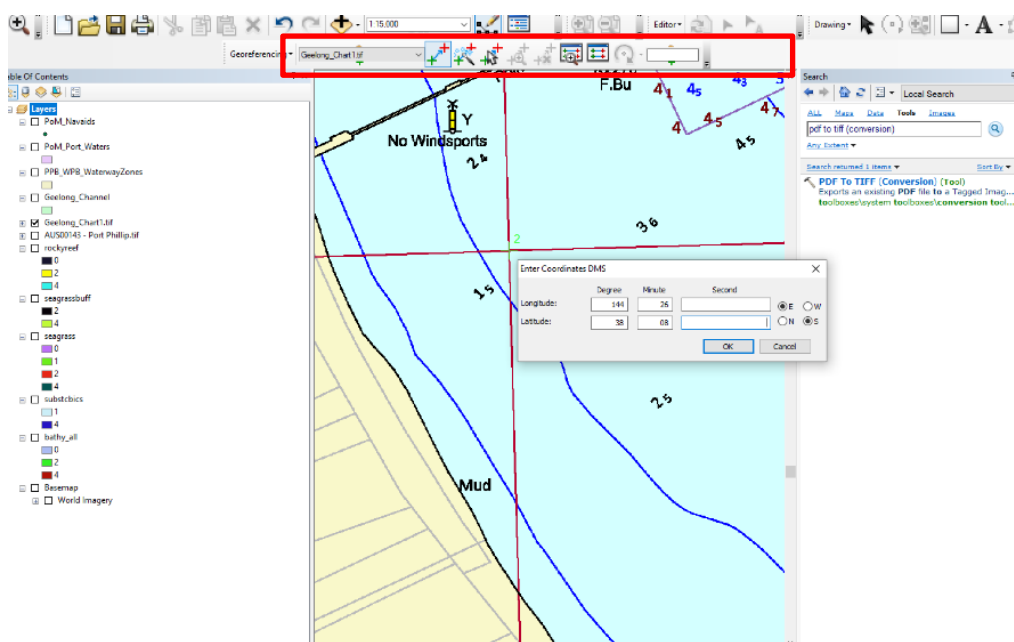


Figure 16. Use the georeferencing toolbar (ArcMap) to georeference images so that they can be referenced to create new features.

## Create new features

In some instances, new features may need to be created in the absence of appropriate data sets – for example, digitising marine infrastructure (i.e., wharfs, jetties, mooring areas, and boat ramps) using satellite imagery. To create new features, right-click the appropriate project folder or geodatabase in ArcGIS Catalog (ArcCatalog for ArcMap) and select new Shapefile or new Feature Class, and choose the appropriate geometry (i.e., point, line, or polygon). Ensure that the Editing toolbar has been enabled (Customize->Toolbars->Georeferencing), and in the Editor dropdown menu, select Start Editing. Select the newly created vector dataset to edit, and, if it does not show up automatically, open the Create Features window to select the dataset again (Editor Toolbar->Editing Windows->Create Features). You can now draw features on the map

using the imagery as a background reference. Attribute fields can also be edited during an editing session, as long as the attribute field has been added outside an editing session.

### 3.4.5 Spatial interpolation of vector data to rasters

Interpolation is a mathematical process that predicts the values for raster cells without a known value, based on surrounding known values (Burrough, McDonnell and Lloyd, 2015). The type of interpolation methods used will depend greatly on the characteristics of the underlying data, including the degree of spatial autocorrelation, the distribution of the data, the quality and resolution of the input data, the known bounds/knowledge of the system (i.e., known physical properties and behaviours of the variable being measured), the desired smoothness of the surface, and the study question/level of data quality required to answer this question. Choosing an interpolation method can be a complicated decision, and it is advised to critically evaluate and test different interpolation methods and parameters on your data to determine the best approach.

#### Creating a 'base layer'

[Section 3.2](#) above outlined how to spatially define an area of interest. This polygon layer should now be converted into a raster 'base layer' to use in interpolations and other raster operations.

One way to do this is to create a raster from the area of interest polygon created in [Section 3.2](#). Ensure that the polygon is in the correct coordinate system and use the Polygon to Raster tool (Conversion Tools -> To Raster -> Polygon to Raster) to create a raster for the area of interest extent. In the Cell Size Field, specify the raster resolution that is established from [Section 4.1](#). Here, the Cell Assignment Type can be left blank, assign the priority field column constructed in [Section 3.5.3](#) to the Priority Field.

When determining the cell size, it is important to make sure this is the same cell size that you wish to interpolate your vector data to. One good tip is to make a couple of base layers at the same time, with the different resolutions you'll need throughout construction of the RSM (i.e., one cell size for your interpolation from vector data, and another for your final model outputs – if these are expected to be different).

In some cases, there may already be a raster dataset (such as bathymetry) that fits the criteria for a reference base layer, in which case, it is fine to designate that as a base layer ([Section 3.2](#)).

It is important to consider that the geoprocessing environment may need to be adjusted for some raster operations, with input field adjustments/considerations listed below

#### Adjusting geoprocessing environments for raster operations:

**Extent:** The Extent environment setting defines the features or rasters that will be processed by a tool. The tool will only process features or rasters that fall within the extent specified in this setting. The extent of the output dataset will typically be larger than the Extent setting to account for features or cells that pass through the extent rectangle.

**Mask:** Geoprocessing tools that honour the Mask environment will only consider those cells that fall within the analysis mask in the operation.

**Cell size:** Geoprocessing tools that honour the Cell Size environment set the output raster cell size, or resolution, for the operation. The default output resolution is determined by the coarsest input raster datasets.

**Snap raster:** Geoprocessing tools that honour the Snap Raster environment will adjust the extent of output rasters so that they match the cell alignment of the specified snap raster.

Generally, the other fields can be left blank or at their default values; however, it is good practice to review the Tool Help for each of the fields and decide whether these parameters should be adjusted based on the characteristics of the input data or the desired output data.

## Spatial interpolation

Interpolation is a statistical method by which known related values are used to help estimate nearby unknown values. There is no universally approved method of interpolation, the selection of a method will depend on specific data distributions, data characteristics, and the number of data points. Different interpolation methods can lead to different estimations of unknown data values, and therefore the creation of different maps, hence the selection of an appropriate interpolation method is key. Generally, Empirical Bayesian Kriging (EBK) method has performed well for interpolation of water quality data in the past and allows for automation of parameter selection for a range of kriging parameters that are otherwise difficult and highly technical to properly assign.

However, in some cases, exploratory analyses may need to be conducted to find what interpolation method is most suited to a particular dataset. This was done for the Botany Bay estuary in NSW, Australia (see [Case study: Botany Bay, New South Wales, Australia](#)). The dataset constructed for water quality parameters was pulled from multiple data sources, and as such, had a different number of data points and different spatial arrangement of data points throughout the estuary, for each water quality parameter. The five water quality parameters investigated were salinity, temperature, dissolved oxygen, chlorophyll-a, and turbidity.

Within the Geostatistical Analyst extension in ArcMap/ArcGIS Pro, spatial interpolation methods can be compared to determine which method is most suitable, using the Geostatistical Wizard. The process produces statistical indicators using cross-validation techniques, which can be compared between methods (Table 3). Comparing the results of interpolation methods with help from experts in the area of interest may be a helpful way of ensuring that the interpolation results reflect on-the-ground conditions.

There are two broad groups of interpolation methods:

**Geostatistical:** Utilises the statistical properties of the measured points to create surface and model the uncertainty or error in predictions

**Kriging (Geostatistical)** – This method is a very powerful way to estimate surface values, especially when dealing with a sparse set of input point. This method delivers both a prediction value and a confidence value for that prediction. It generally works well for climate variables; however, it requires substantial analysis up front before the kriging process can be initiated. Typically, this involves generating a [semi-variogram](#) to determine whether spatial autocorrelation can be assumed. There are many different types of kriging to choose from depending on input data parameters.

**Empirical Bayesian Kriging (Geostatistical)** – This method is very similar to the regular kriging interpolation method (above), but automates the more difficult manual adjusting of parameter models that are required in other kriging methods. Empirical Bayesian Kriging automatically calculates these parameters through a process of sub-setting and simulations, and this in turn enables more accurate predictions of standard errors as well as outperforming other kriging methods for small datasets.

**Deterministic:** Simply creates surfaces from measured points.

**Splining** - This method is often used when a smooth surface is desired, and when it is necessary for the predicted values to exactly align with input points.

**Inverse Distance Weighting** – This method works well for highly variable data and assumes that the influence of a value will wane the further from the measured point. It works well with a dense set of input points and is a good choice if it is ideal to keep interpolated values within the range of input values.

**Topo to Raster (Deterministic)** – This method is especially useful if the only available data on bathymetry is depth contours. Using the depth contour or point values, this method can create a

hydrologically-correct digital elevation models. When using this method, it is helpful to constrain the boundary using coastline data or other feature boundaries to prevent prediction of on-land values.

One of the most important considerations around interpolation is to not over-enhance the resolution of the underlying spatial data. For example, for sparsely populated input points, choosing a high resolution for the interpolated data product will exaggerate the reliability of the output surface. If there are not enough data points, you cannot interpolate. If there are enough data points, a general rule (assuming even distribution of data points) is that the resolution should be half the distance of the two closest points. For example, if the two closest datapoints were 100-m apart, 50 m would be a suitable raster resolution.

It may be necessary to consult the input data's metadata or provider to determine an appropriate resolution, it may also take some trial and error to find a balance between spatial resolution for smooth output and geoprocessing times. The issue of data and model resolution is discussed in more detail in [Section 4.1](#). Note that interpolated data products don't necessarily need to be the same as the model resolution, rather it should depend on the spatial spread of data points throughout the area of interest. More information on interpolation can be found [here](#).

If left unchecked, interpolation of vector data into a raster environment can propagate beyond the area of interest, which can both slow geoprocessing times and skew results. It is therefore good practice to define the bounds of an AOI in the 'Environments' tab, whenever working with raster data types.

## Common use cases of interpolation in RSMs

### Bathymetric data

For some areas, raster datasets depicting bathymetry will be readily available for use as an input into the model. In other areas, bathymetry data may only be available as points (each with a value for a depth sounding) or contour lines, with each line depicting contours at specific depth intervals. The Topo to Raster tool (Spatial Analyst Tools -> Interpolation -> Topo to Raster) can be used to convert points or contour lines through a process of interpolation (Figure 17).

In the Topo to Raster tool, select the contour or point data as the Input feature data in the first field (Figure 17). When the dataset appears in the table, select the field from the input data that contains the numerical depth values, and select the data type (these may auto-populate). For lines, choose "Contour" as the type, and for points, choose "Point Elevation." The Output Cell Size field will automatically populate, but it may need to be adjusted depending on the desired model resolution (See [Section 4.1](#) for more details on choosing an appropriate model resolution).

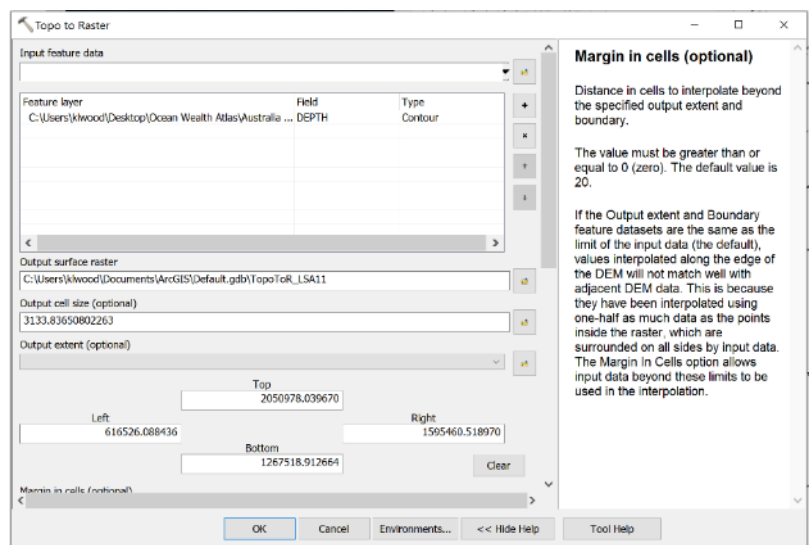


Figure 17 Using the Topo to Raster Tool

The Output Cell Size field will automatically populate, but it may need to be adjusted depending on the desired model resolution (See [Section 4.1](#) for more details on choosing an appropriate model resolution).



## Water quality data

It is crucial to engage in early discussions with local catchment authorities/local councils/managers/ the Environmental Protection Agency (EPA) about the availability of water quality data for the region, as it can sometimes take a lengthy amount of time to finalize data agreements and physically obtain the data. Unfortunately, there may not always be sufficient water quality data to include in a habitat or restoration suitability model. In these cases, it is essential to engage with local stakeholders (from local council, marine/estuary managers, port authorities, and other local experts e.g. fishermen) and review scientific literature and estuary management plans to understand any water quality risks within an area.



Figure 18. Mullet on Sydney Rock Oyster (*Saccostrea glomerata*) reef. Credit: Francisco Baena-Martinez.

### Case study: Gippsland Lakes (Victoria, Australia)

The area of interest for shellfish restoration in Gippsland Lakes has water quality data collected by the EPA once a month at three sites, for the past decade. However, this data was not in a format suitable to integrate into the suitability model or at an appropriate spatial scale for spatial analysis. The sampling took readings of water quality parameters at multiple depths throughout the water column, rather than taking one sample at many sites throughout the area. These data, collected once a month, could not accurately capture the length or breadth of events that may limit site suitability throughout the estuary. This estuary experiences hypoxic events and long-lasting salinity stratification events, caused by a complex interaction of high-nutrient inputs into the estuary and high rainfall events. In this instance, by conversing with local experts, we were able to elucidate high-risk areas and alter the depth parameter criteria, to avoid placing a reef in those areas of higher risk.

Where water quality data are available, the quality of this may vary. Some estuaries may have spatially and temporally intensive water quality sampling programs (e.g. Chesapeake Bay, USA), some estuaries may have hydrodynamic or biogeochemical models developed (this is the gold standard e.g. D'Entrecasteaux channel in Tasmania, Australia) or data available through remote sensing (e.g., turbidity or chlorophyll *a* data from satellite platforms) (Snyder *et al.*, 2017), comparatively some estuaries may also have no or very little water quality data.

If there is point data of water quality data collected for the area of interest, prior to interpolation, you should consider the following:

#### *What is the spatial and temporal sampling frequency of point data?*

Consider whether there are sufficient data points for interpolation, and if they are spread relatively evenly throughout the estuary. Consider whether the temporal frequency of water quality sampling may capture events that limit site selection (e.g., short sharp extreme events lasting 10 - 20 days or longer-lived extreme events lasting 1 - 2 months)

#### *What is the sampling regime and methods used for data collection?*

Consider how the number and spatial spread of datapoints relate to size and shape of the estuary/focal study area for the RSM. When interpolating this point data to a continuous raster layer, the distance between datapoints will determine what an appropriate raster resolution will be for the output raster maps.

It is also important to consider how the data was collected. Consult metadata for each dataset acquired to understand data collection method, sampling regime and depth. From this you should be able to determine whether data is suitable for inclusion.

Visualise the data set to assess whether there is substantial spatial or temporal variation of each water quality parameter in the dataset, and how this variation relates to the parameter criteria

Simple line plots may be used to visualise how the parameter values changes over time. Consider whether there are key months/seasons that may limit site suitability, alternatively, there may be very little or no variation in one parameter, which may result in the whole area of interest receiving the same suitability score. If this happens, there is no reason to include the data for this parameter as it will not affect the final suitability map produced.

#### *How do you summarize water quality point data in a meaningful way?*

This process can be tricky, and will involve good working, local knowledge of the estuary, and what water quality events may limit site suitability. Some HSM/RSMs have in the past been constructed on monthly or annual means of water quality parameters (e.g., using an average of all recorded temperatures across a year, and applying parameter criteria/suitability scores to these averaged values). However, while this approach may offer rough idea about salinity/temperature gradient throughout the estuary, it is neglecting data indicative of shorter extreme events that may be formative in shaping shellfish distributions (e.g., summer heatwaves may be skipped over if only annual averaged temperatures are used).

Another option is to create a model based on the most limiting parameters or based upon exceedance thresholds. For example, Theuerkauf et al., (2019) considered frequency of water flow events greater than 15 cm/s (i.e., the threshold flow value resulting in cessation of oyster feeding) in developing an RSM focused on water filtration services. Similar approaches for other parameters related to specific biology of the shellfish species of interest can be useful. For example, intertidal species in shallow waters may be disproportionately affected by heat waves, compared to subtidal oyster species. Frequency of heat waves (i.e., increase in seawater temperature above the upper 90th temperature percentile for a period of five or more days from a 30-year historical baseline) in place of mean water temperature may be a more informative parameter to include within an RSM (Hobday *et al.*, 2016; Scanes *et al.*, 2020).

Ultimately, determining how to summarise water quality data prior to interpolation can vary largely between areas of interest, as many waterways/estuaries have very different characteristics and local conditions of which will lead to their own set of limiting parameters.



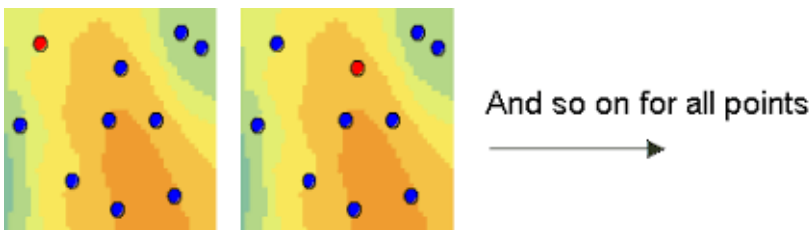
Figure 19. Native Sydney rock oyster (*Saccostrea glomerata*) reef.  
Francisco Baena-Martinez.

Credit:

### Case study: Botany Bay, New South Wales, Australia

Four methods of interpolation were investigated (two geostatistical; Empirical Bayesian Kriging (EBK) and Ordinary Kriging (OK), and two deterministic; Inverse Distance Weighting (IDW) and Local Polynomial Interpolation (LPI)).

Across validation technique (within the Geostatistical analyst extension) was used to evaluate and compare the accuracy of each interpolation method, for each parameter. For this technique, single observations were removed one at a time from the dataset, and the interpolation was performed again to generate an estimate at the location of the removed sample. This process is repeated at each datapoint for each cross-validation run, then the generated interpolated value can be compared to the true value to assess the accuracy of the model (Murphy et al., 2010).



Statistical criteria were generated from each cross validation run, to assess compare accuracy of different interpolation methods. For each water quality parameter, the accuracy of spatial interpolation methods was assessed on the basis of several statistical criteria:

**Mean Error (ME):** the averaged difference between the measured and predicted value.

**Root Mean Square Error (RMSE):** indicates how closely the model predicts measured value.

**Mean Standardised Error (MSE):** represents the average of standardised errors.

**Root Mean Square Standardised Error (StdRMSE):** indicates whether the predicted standard errors are valid, if this number is greater than one, the model has underestimated the variability in predictions, if less than one, variability is overestimated.

**Coefficient of determination (R<sup>2</sup>):** is a statistical measure that measures the proportion of variation in the dependent variable that can be attributed to the independent variable, i.e., how well a statistical model predicts an outcome.

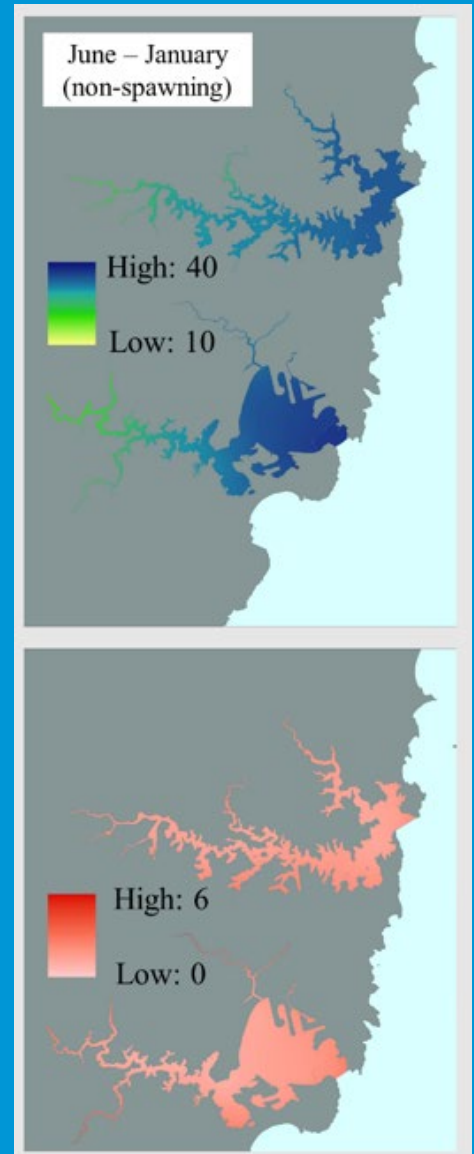


Figure 20. Continuous spatial layers of temperature (°C) (top) and associated standard error map (bottom). Maps are displayed for Sydney Harbour and Botany Bay estuaries, across June – January, non-spawning months.

### Case study: Botany Bay, New South Wales, Australia

The model is considered most valid when the RMSE is as low as possible, the ME and MSE is near zero, and the closer stdRMSE and R<sup>2</sup> is to one, the better the model fit (Bhunja et al., 2018, Chum et al., 2017, Murphy et al., 2010, Njeban, 2018, Ohmer et al., 2017, Bronowicka-Mielniczuk et al., 2019).

EBK outperformed other kriging methods across all water quality parameters and thus was utilized for each spatial interpolation. Generally, EBK provides automation for selection of various kriging parameters that are otherwise difficult or highly technical to assign. Kriging interpolation methods may also use these statistical criteria to assess where predicted estimates of water quality parameters have the greatest uncertainty (Njeban, 2018). This was conducted for each parameter to produce a map indicating the standard error in predictions.

Table 4. Example of geostatistical outputs for Botany Bay estuary, to assess the accuracy of each interpolation model on the basis of statistical criteria Mean Error (ME), Root Mean Square Error (RMSE), Mean Standardised Error (MSE), Root Mean Square Standardised Error (StdRMSE) and coefficient of determination (R<sup>2</sup>). Bolded numbers indicate the best performing statistic for each method investigated, for each parameter. Bolded method indicates the final method chosen to use for interpolation of specific parameter. \* empirical transformation used with exponential detrended semi-variogram applied.

Parameter	Method	ME	RMSE	MSE	StdRMSE	R <sup>2</sup>	
<b>Salinity</b>	Geostatistical	<b>EBK</b>	<b>-0.037</b>	3.420	<b>-0.018</b>	<b>0.968</b>	0.624
		OK	-0.158	<b>3.257</b>	-0.041	0.787	0.732
	Deterministic	IDW	0.231	4.044			0.612
		LPI	-0.217	3.342	-0.073	0.947	<b>0.807</b>
<b>Temperature</b>	Geostatistical	<b>EBK</b>	-0.003	0.518	0.008	<b>1.016</b>	<b>0.792</b>
		OK	<b>0.001</b>	0.499	<b>0.001</b>	1.086	0.790
	Deterministic	IDW	0.011	0.492			0.802
		LPI	-0.012	<b>0.516</b>	-0.017	1.017	0.825
<b>Dissolved oxygen</b>	Geostatistical	<b>EBK</b>	<b>-0.055</b>	<b>19.486</b>	<b>0.000</b>	<b>0.921</b>	0.670
		OK	0.873	20.415	0.033	0.796	0.578
	Deterministic	IDW	-0.154	19.654			0.700
		LPI	-0.807	21.740	-0.144	0.872	<b>0.752</b>
<b>Chlorophyll-a</b>	Geostatistical	<b>EBK</b>	0.421	3.255	0.073	<b>0.991</b>	0.214
		OK	<b>0.003</b>	12.567	<b>0.000</b>	1.101	-0.114
	Deterministic	IDW	0.061	<b>2.102</b>			0.012
		LPI	-0.465	3.911	0.039	0.990	<b>0.979</b>
<b>Turbidity</b>	Geostatistical	EBK	-11.267	55.712	-0.098	<b>1.102</b>	-0.018
		<b>EBK*</b>	<b>-4.844</b>	32.058	<b>-0.041</b>	0.861	<b>0.418</b>
		OK	-6.315	56.427	-0.256	2.019	-0.066
	Deterministic	IDW	-8.190	33.817			
	LPI	3.016	<b>29.849</b>	0.086	1.033	-0.019	

## 3.5 Applying parameter criteria to vector and raster data

### 3.5.1 Sub-setting data

For data in vector shapefile format, it may be necessary to select specific features from a shapefile to include in the analysis, based on their relevance to the model (either feature attributes or geographical location).

#### Based on feature attributes:

For example, the initial shapefile dataset may contain the location of all habitat types in a given region, but the model may only want to consider seagrass and rocky reef habitat. In this case, to make the data easier to visualize and work with in the future, it can be helpful to create a separate shapefile layer for each habitat type, and potentially within a single habitat type, based on different attributes (e.g., high- and low-density patches of seagrass).

#### Based on geographical location:

In some cases, shapefile datasets may also occupy a much larger geographical extent than the area of interest for the model. Removing areas outside the area of interest can be useful for cutting back on processing speeds. Either the 'Select by Location' tool or 'Select by rectangle or polygon' tool can be used to manually select features that fall in a specified area. Selected features can then be exported from the source layer to produce a new shapefile. Alternatively, the 'Clip' tool (Geoprocessing menu) can also be used to clip input data directly to the shape of the area of interest.

### 3.5.2 Adding buffers and modifying vector attribute tables

At this stage, it is useful to group shapefiles depending on whether or not they will have buffers added around features, and whether they will be included in the analysis or be included as an overlay on the final map.

*Not to be included in analysis:* If shapefile features are intended to be only used as an overlay on the final map, once the shapefile is projected correctly, nothing further needs to be done. An example of this may be shapefiles containing Marine Protected Areas and restricted-use zones, whilst the location of these features should be considered to inform site selection, the development of associated parameters criteria and weightings is complex due to the challenges of negotiating exemptions of exclusion zones/habitat protection zones for restoration activities.

*To be included in analysis:* Features included in analysis may or may not need to have buffers applied to them. If no buffers are required, skip this step and proceed to [Section 3.5.3](#).

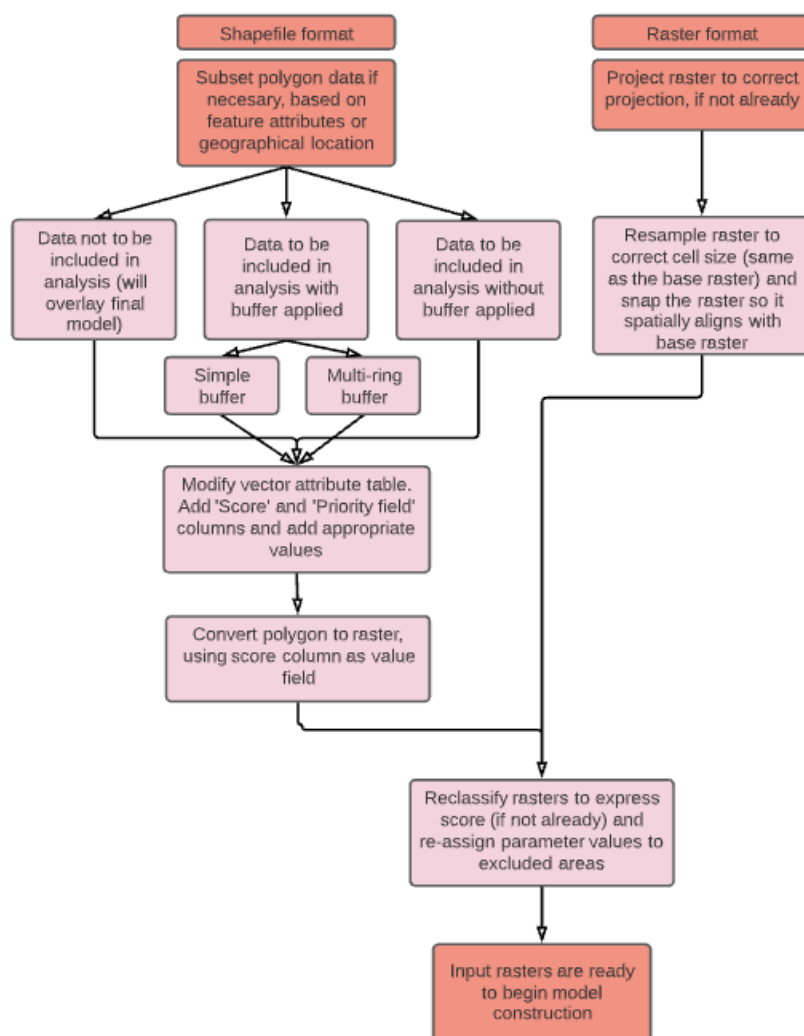


Figure 21. Schematic demonstrating how parameter criteria may be applied to different types of vector and raster data.

Applying buffers (i.e., setbacks) to avoid features of a vector layer is a useful way to minimize disturbances to sensitive habitats or avoid conflict with human uses or marine infrastructure, by excluding the area in close proximity to these features. Buffers can be simple, such as where an area outside a given buffer is appropriate for restoration and any area within the buffer is not. When a restoration project may benefit from being close to existing habitat, but there is concern that the restoration implementation may impact the existing habitat a more complex buffer approach can be used. This approach excludes area directly adjacent to the existing habitat but includes area at an optimal distance away from the habitat (see Figure 22).

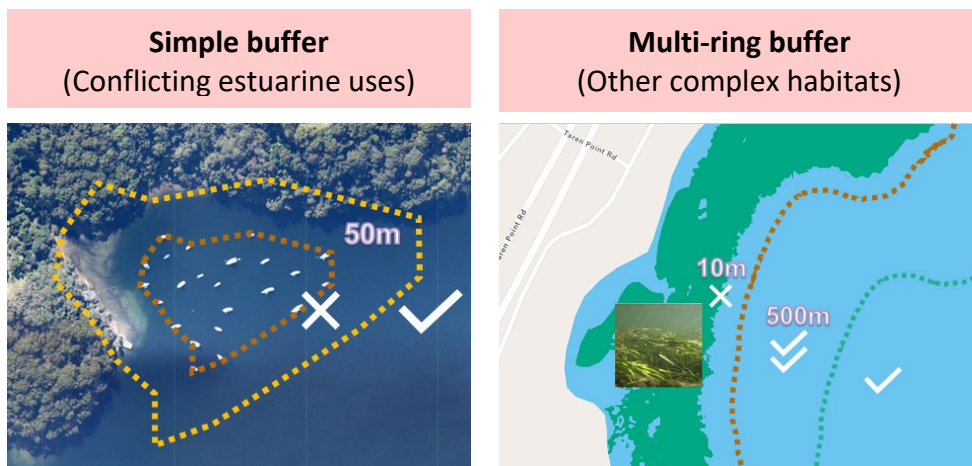


Figure 22. Examples of a simple buffer used around a mooring zone (left) and complex/multi-ring buffer used around seagrass beds (right).

### Simple buffers

Examples of simple buffers are where local regulations require that restoration not take place within 500 m of a shipwreck or within 100 m of a mooring zone (Figure 22).

First, consider the geometry type of the feature to be buffered. For example, if the area to be buffered is a water-skiing area, but it is represented by a line feature, the line will need to be converted to a polygon, either using editing tools or the Polyline to Polygon tool, otherwise areas inside the delineated area may not be included in the buffered area.

To use the Buffer tool, navigate to the Buffer tool in the Geoprocessing drop-down menu. Input the feature to be buffered and enter the buffer distance (in this case of Figure 22, 50 m) into the Distance field, making sure to select the appropriate unit (Figure 23). Note that your features will need to be in a projected coordinate system before they can be buffered, so it is important to complete the steps in [Section 3.3.1](#) before buffering any features. Although not specifically required for simple buffers, setting a dissolve type of “All” is good practice. Other default settings can be left as they are.

### Multi-ring buffers

When working with a more complex buffering system, a multi-ring buffer tool may be used. For example, the seagrass depiction in Figure 22, and geoprocessing example in Figure 23. The Multi-ring buffer feature works in much the same way as the simple buffer tool but allows the user to input multiple distances in at the same time.

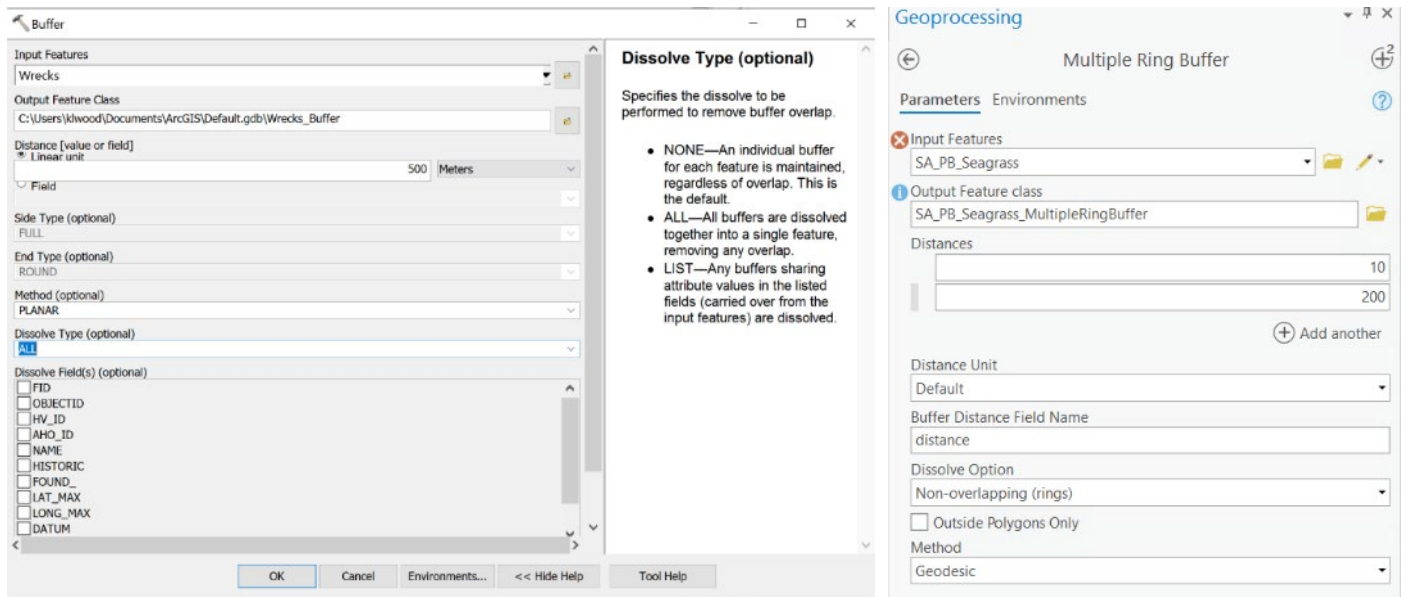


Figure 23. Parameters for applying a simple buffer to features in ArcMap (left) and using a multi-ring buffer in ArcGIS Pro (right).

### 3.5.3 Modifying vector attribute tables

At this stage, if no further modifications of vector data are required, it is time to start modifying attribute tables of vector data sets, before converting them to raster format. In this step, two additional fields in each attribute table need to be constructed, a 'Score' field and a 'Priority field column'.

#### Creating new column in an attribute table

Create a new attribute field by right-clicking on the dataset in the table of contents and selecting Open Attribute Table. In the attribute table, click on the icon in the upper left corner and select Add Field. Give the field a name such as "Score" and select "Short Integer" from the drop-down menu. There may be other reasons why it may be helpful to add attribute data columns, in which case, use [this guide](#) to help determine which field type is best.

#### Score column

Here is where the parameter values identified in [Section 2.4.1](#), are applied to spatial features. In the newly created 'Score' column, parameter values/scores can be typed directly into the cells if an editing session is open, but if there are many features with the same score, it is good practice to select groups of features that will have the same score using the Select by Attribute tool, right clicking on the column, and selecting "Field Calculator". In the field calculator, you can enter the score for that category of features in the window, and it will assign that value only to the selected feature. It is best practice to make sure every feature has a score otherwise errors can occur during raster processing. Having scores of 0, can also cause some errors to occur during the raster processing, it is therefore best to assign a "dummy" score for features without a score (e.g., 99999, or any other number that will not be confused with a valid input score) that can be corrected during the raster reclassification process outlined in [Section 4.4](#).

#### Priority field column

This is also a good time to add a "Priority Field Column" which can also prevent errors during raster conversion. In another data column, use the steps described in the previous paragraph, to assign all features a value of '1'.

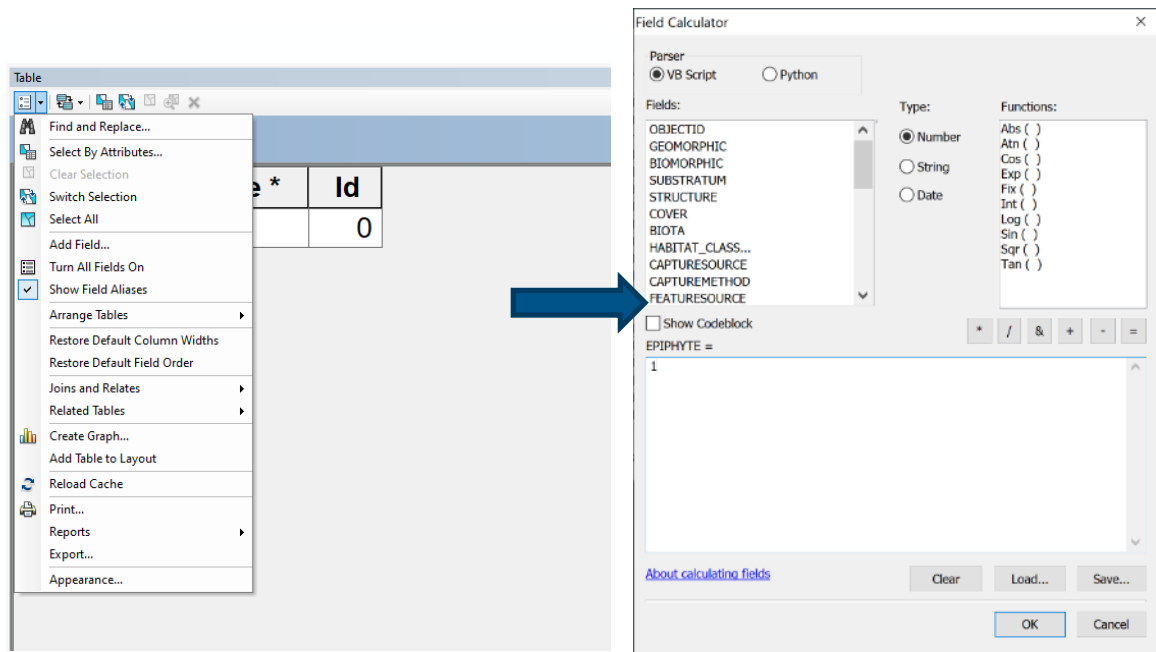


Figure 24. Adding a field to an attribute table (left) and modifying the attributes using the Field Calculator in ArcMap (right).

## 4. RASTERS AND MODEL CONSTRUCTION

Once all feature data layers have been prepared for each of the model parameters to be included within the RSM, it is time to create the input rasters for the model. This is achieved in three stages – 1) Deciding upon the desired resolution of the final model, 2) Converting all vector layers to raster format, and 3) Reclassifying all raster layers to reflect pre-defined suitability scores.

### 4.1 Defining model resolution

There is no standardised rule for determining model resolution. Generally, this requires striking a balance between the spatial precision of the input data, the size of the area of interest, the project's siting needs, and the size of buffered polygon features. Ultimately it is up to the discretion of the modeler in consultation with end-users of the model to determine the appropriate resolution for the model. It can be useful to discuss spatial resolution with other colleagues who work in the GIS space.

While higher resolution models are generally preferred, if input data are not themselves of high spatial accuracy, the predictions of a fine-scale model can be misleading. It is important to remember (and remind end-users) that while models provide guidance as to where restoration projects should be considered, they are not typically intended to identify an exact location for restoration, but rather provide guidance as to where field verification activities should focus their efforts. This method saves time, money, and increases chances of restoration.

As shapefiles and other feature data (e.g., polygons, polylines) can adapt to any spatial resolution when converted to a raster format, it is often instructive to use any input data derived from imagery (e.g., bathymetry or benthic habitat) as a baseline for what raster resolution is appropriate. Consult the metadata for these datasets for information on resolution.

Some of the following case study examples below (also see Aguilar-Manjarrez et al., 2018), may provide guidance in determining a suitable resolution for future planned RSMs.



**Case study: Gulf St Vincent, Adelaide (South Australia, Australia)**

Restoration suitability modelling in Gulf St Vincent was conducted to identify potential sites for native *Ostrea angasi* oyster reefs. The area of interest was quite large, at > 2,000 km<sup>2</sup>, and the available bathymetry data's resolution was ~250 m. For this model, a 50 m resolution was chosen. Although using a finer resolution than the input bathymetry is not always best practice as it can artificially enhance the resolution of the RSM results and introduce error, in this case, the field verification activities that were planned based on the model outputs justified the re-scaling of the input data to a finer resolution.

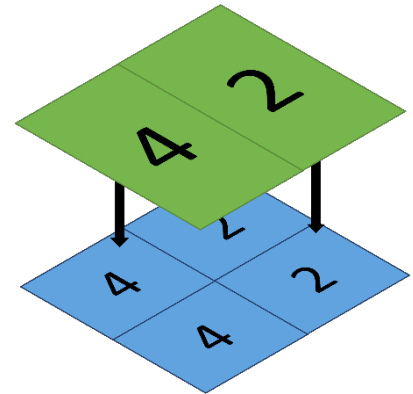


Figure 25. Graphic illustrating the resampling to a smaller raster size.

**Case study: Botany Bay (New South Wales, Australia)**

Habitat and restoration suitability modelling was conducted for Botany Bay to guide site verification efforts for the restoration of native intertidal *Saccostrea glomerata* and subtidal *Ostrea angasi* oyster species.

For this estuary, there were two different raster resolutions used in the HSM construction, but the final model required a single resolution. Water quality data had a raster resolution of 50 m, and bathymetry data had a 10 m resolution. Water quality rasters at a 50 m resolution were resampled to a 10 m resolution (Figure 25). Similarly, to the Adelaide model (previous case study), it was desirable to maintain the 10 m bathymetric resolution, rather than lose important spatial information by selecting a coarser spatial resolution. However, this typically is not a best practice without careful consideration as it can artificially enhance data quality and introduce error.

The RSM constructed for Botany Bay, incorporated small data features <10 m. In this case, to maintain these small data features, the HSM were resampled to a 1 m grid size, to allow for easier incorporation with these smaller, complex spatial features, rather than risk losing that information if the resolution of the final model was lower.

Whilst this did increase geoprocessing times, it was appropriate for this estuary, given high spatial complexities. In other less complex and larger areas of interest this approach may not be appropriate.

## 4.2 Converting polygon and raster data to model input rasters

### From polygons

Data inputs that are in vector format will need to be converted to rasters. Most input datasets will likely be polygons and can be converted to rasters as described in this section, but lines and points can also be converted to rasters using the tools in the Conversion Tools toolbox (Conversion Tools -> To Raster).

If the parameter values have already been assigned to the features, as described in [Section 3.5.3](#) the field with the parameter values can be selected for the Score field. If values have not yet been assigned, that can be done in subsequent steps ([Section 4.4](#)), choose the column that best describes the parameters that will be classified (i.e., if this is a benthic habitat dataset, choose the field that delineates the habitat types).

To ensure that all input rasters can be overlaid with one another to create the final model, it is necessary to ensure that their extent, resolution, and grid structures align. Use the Environment Settings (as described in [Section 3.4.5](#)) to match the output rasters with the reference base raster.

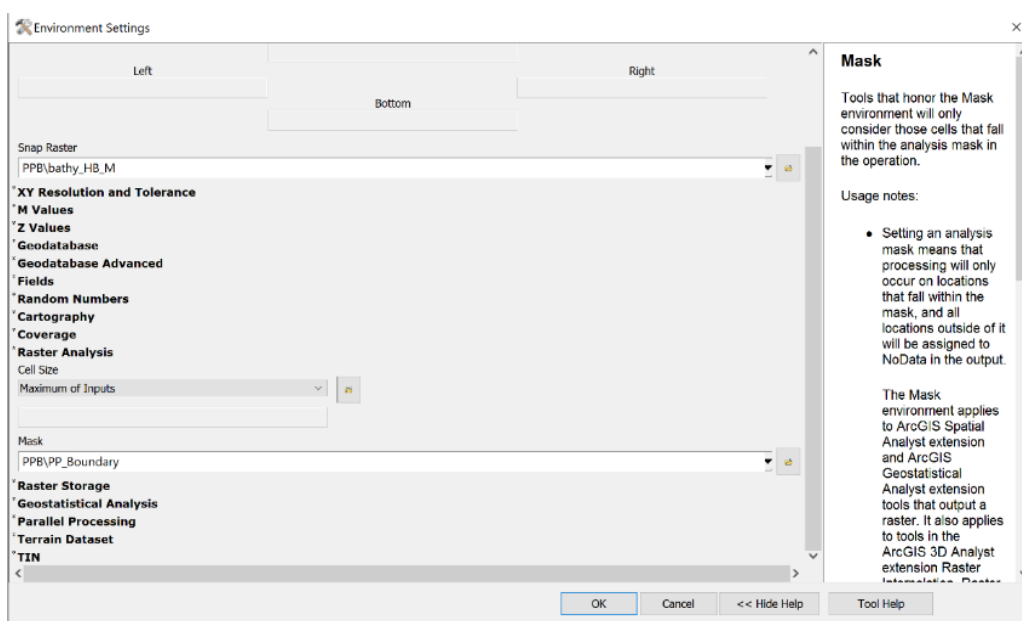


Figure 26. Using the Raster Analysis Environment Settings in ArcMap.

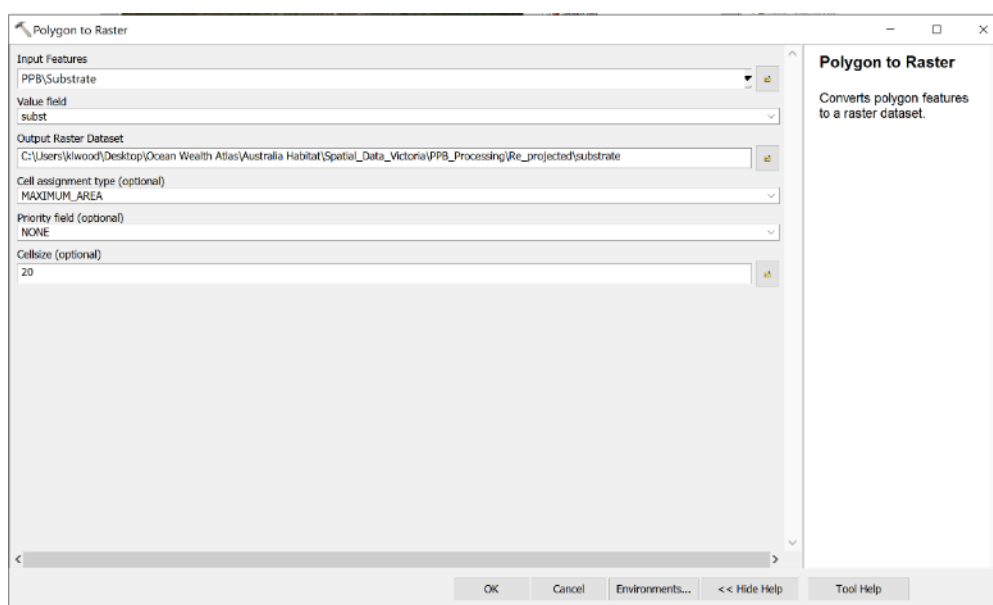


Figure 27. Using the Polygon to Raster tool in ArcMap.

## From rasters

If any of the input data layers are rasters, it is necessary to modify it to match the attributes of the reference dataset from the previous section. If the raster is not already in the project's coordinate system, project it using the Project Raster tool (Data Management Tools -> Projections and Transformations -> Rasters -> Project Rasters). Then, use the Resample Tool (Data Management Tools -> Raster -> Raster Processing -> Resample) to adjust the resolution so it matches the grid cell size determined in [Section 4.1](#). In the Output Cell Size Field, select the reference dataset and the X, Y fields should automatically populate with the grid resolution. In the Resampling Technique field, choose Nearest if the input raster is made up of categorical data (e.g., benthic habitat types) or Bilinear if the input data are continuous and numerical (e.g., depth).

Before clicking "OK", it is possible to save a step by "snapping" the output raster to the reference data, so that the resulting grid cells will be in alignment ([Section 3.4.5](#)). In the field for Snap Raster, choose the reference raster in the drop-down menu and click "OK". Then, click "OK" again to run the tool. The result should be a grid whose cells align with and are the same size as the input raster. It is also helpful to set the extent as the base/reference layer here, so the resulting raster will only cover the project extent. This is not strictly necessary, but it is often advisable, especially if the raster is large, to increase the speed of subsequent geoprocessing steps.

## 4.3 Categorizing input rasters (binary and gradient)

Model parameters typically fall into two separate categories, binary and gradient (see [Section 2.4.2 Parameter weights](#)). Binary parameters depict features in which some areas are completely restricted, and others are not. There are only two suitability scores in binary parameters, one of which is zero. Examples of binary parameters include shipping lanes, navigational buoys, shipwrecks, and any other areas where restoration projects would be completely restricted.

Gradient (non-binary) parameters depict features that are scored on a continuous or categorical suitability scale and are generally all parameters that do not fall into the binary category of scores equalling zero or one. Gradient parameters have a larger range of suitability scores used for each parameter. Examples of gradient parameters may be proximity to complex habitat (e.g., seagrass), salinity and depth. It is critical to identify the category for each of the input variables in preparation for the next step. In some RSMs, binary and gradient parameters are considered as separate sub-models that are subsequently integrated (e.g., all binary parameters included within a constraints-based 'exclusion analysis' sub-model, and all gradient parameters included within a sub-model – see Puckett et al., (2018)).

## 4.4 Reclassifying rasters

In the reclassification step, input rasters are re-assigned parameter scores reflective of defined suitability relationships based on the ranges of suitability scores for each model parameter defined in [Section 2.4.2](#). The process of reclassifying rasters to suitability scores may utilise continuous (Barnes *et al.*, 2007; Puckett *et al.*, 2018; Chowdhury *et al.*, 2019) or discrete (i.e. integer) (Lewis, Fox and DeWitt, 2019) scales. The scale used to reclassify each raster is dependent on the parameter type and having sufficient knowledge with which to define relationships between target shellfish species and parameter raster to be reclassified.

Binary type parameters must use the discrete reclassification approach, whereas gradient parameters may use continuous or discrete approach.

This process should be repeated for every input dataset until there is a reclassified raster for every model parameter.

## Discrete reclassification

This method of reclassification is the simplest approach and is primarily used when there is insufficient knowledge of relationships between each parameter and suitability for restoration to allow for the use of a continuous scale. Discrete suitability scores for each parameter are often set based on the biological tolerances of shellfish species following an extensive literature search.

Discrete reclassification is done using the Reclassify tool (Spatial Analyst Tools ->Reclass ->Reclassify). Using the Reclassification table in the Reclassify tool, these scores are assigned to the value ranges (Figure 28). [Note that depths are often stored as negative values, as seen in this example]. 'NoData' can be used to define areas to not include in the analysis, but generally it is good practice to have a numeric value (like zero) for all excluded depths within the study estuary so that you have a complete surface.

For example, the ranges of suitable depths for our focal species are as follows: depths above 3 m are unsuitable (score = 0), depths between 3 – 6 m are optimal (score = 4), between 6 – 9 m are moderately suitable (score = 2), and depths below 9 m is unsuitable (score = 0).

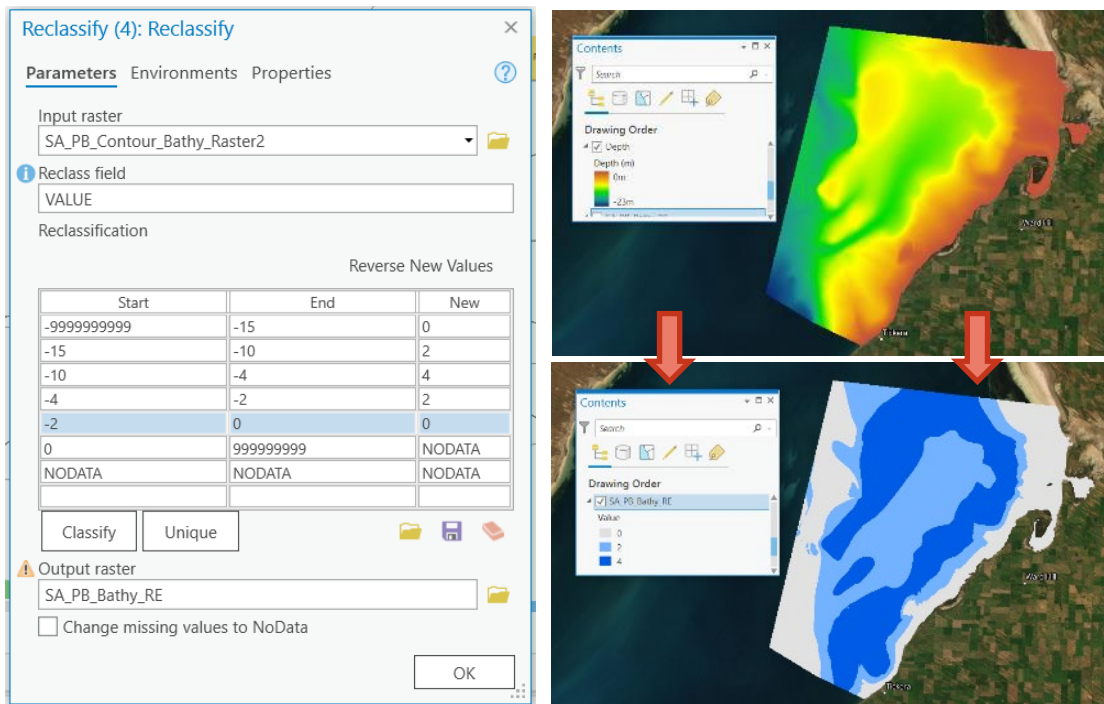


Figure 28. Snapshot of reclassify tool being used to reclassify a bathymetry layer based on suitability criteria (left), and a depiction of a before and after of the reclassification process (right) in ArcGIS Pro.

The reclassification tool should also be used for datasets delineating areas where restoration projects will be prohibited. For example, Figure 28 and [Section 3.5.3](#) describe a scenario where a shapefile is converted to a raster, but the feature's score column is not assigned 0 at that stage as it would cause errors in the raster conversion process. In this case, the Reclassify tool can be used to reassign the navigation channel area to zero and assign all other areas within the area of interest a non-zero value (Figure 28).

## Continuous (linear and non-linear) reclassification

Where relationships between individual parameters and suitability for restoration are well-characterized, continuous functions to define suitability can be developed and applied. Continuous functions are valuable in providing a broad range of suitability scores along a gradient, allowing for strengthened contrast in restoration suitability across a study area relative to binary (two choices, suitable vs unsuitable) or categorical approaches (e.g., a few choices).

To develop a continuous reclassification function, it is important to understand the form of the relationship between an individual parameter and suitability for restoration as derived from available scientific literature and/or expert input. For example, Theuerkauf et al. (2019) developed ecosystem services-centric restoration suitability models for Pamlico Sound, North Carolina and developed individual suitability functions for parameters based upon established relationships between individual parameters and oyster water filtration capacity from the literature. In developing a suitability function to relate mean water flow velocity to oyster water filtration capacity, the available literature indicated a non-linear relationship would be appropriate, whereas a positive linear relationship would be appropriate for minimum observed dissolved oxygen concentrations (Figure 29).

In the case of linear relationships, a simplistic linear regression function can be defined within Microsoft Excel (Figure 29) to determine the relationship between raw raster values for an individual parameter (e.g., dissolved oxygen ranging from 2-8 mg/l) and suitability (e.g., ranging from 0.0 - 1.0).

The resultant equation can be used within Raster Calculator to assign continuous suitability scores along the range of 0 - 1 for the individual parameter.

The same process can be applied for other functions (e.g., non-linear functions, such as the example of suitability relative to mean water flow velocity above). Resultant equations can be passed through Raster Calculator to define and assign suitability. Careful attention should be paid to the use and application of appropriately supported functions to define suitability relationships based on available supporting scientific literature or expert input.

Alternatively, the following equation can be directly modified to avoid the excel step:

For 0-1 normalization:

$$X' = (x - \min(x)) / (\max(x) - \min(x))$$

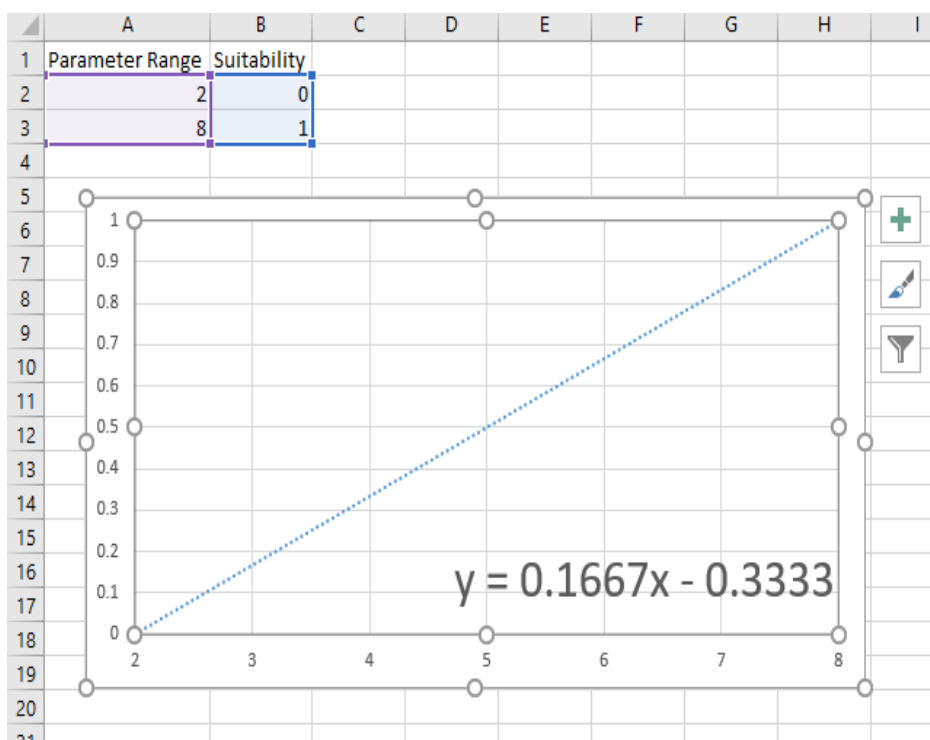
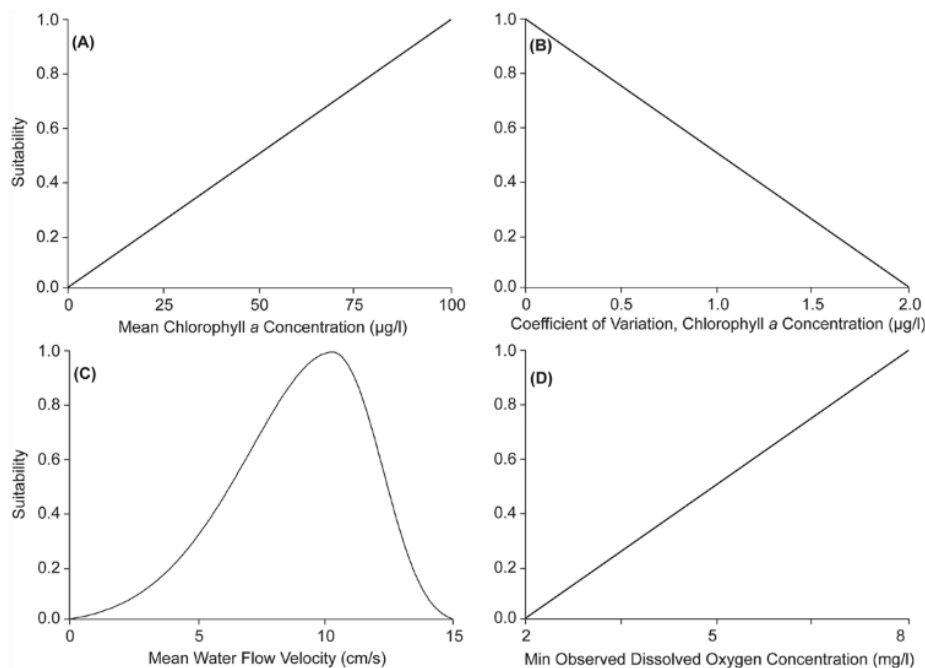


Figure 29. Example of continuous linear and non-linear reclassification of input data in excel.

## 4.5 Calculating RSM

The final RSM is a combination of two separate sub-models, the binary model (also known as constraints-based analysis or exclusion analysis) and the gradient model (Figure 30). These are calculated separately to reduce geoprocessing times and the risk of data handling errors.

Use the Raster Calculator (Spatial Analysis Tools->Map Algebra->Raster Calculator) to create each sub-model and the final model (Figures 31-33).

### Binary sub-model

The binary sub-model will include all the binary input rasters that are on a suitability scale of 0-1 (i.e., an exclusion layer, of areas where restoration activities are not permitted).

The resulting raster will show all areas in your focal system where restoration is restricted, making a handy tool for planning and decision making.

#### Multiplication:

Exclusion layer = Mooring exclusion zones × water skiing exclusion zones × recreational swimming exclusion zones.

### Gradient sub-model

When calculating the gradient sub-model, there are at least two (probably more) potential equations to use for a 3 parameter model.

#### Multiplication:

HSM = Salinity × turbidity × depth

#### Geometric mean:

$$\text{HSM} = \sqrt[3]{\text{Salinity} \times \text{turbidity} \times \text{depth}}$$

The benefit of the geometric mean, is that the model output retains the same scale as all the input features. Whereas, if multiplication is used to calculate the final model, this may need to be rescaled back down to the original suitability scale of 0 to 4. Additionally, the use of the geometric mean ensures that if a given cell is assigned a score of '0' for an individual parameter, it will retain a score of '0' for that location within the final RSM.

When incorporating the conflicting use and logistical restrictive layers (i.e. proximity to moorings or navigation channels), it logically makes sense to exclude these areas – which is why a buffer zone of exclusion (score = 0) is established around them. However, beyond these exclusion zones, there is no physical or ecological benefit to shellfish being restored there. For this reason, it makes sense to use these areas purely as an exclusion layer and on a scale of 0 to 1.

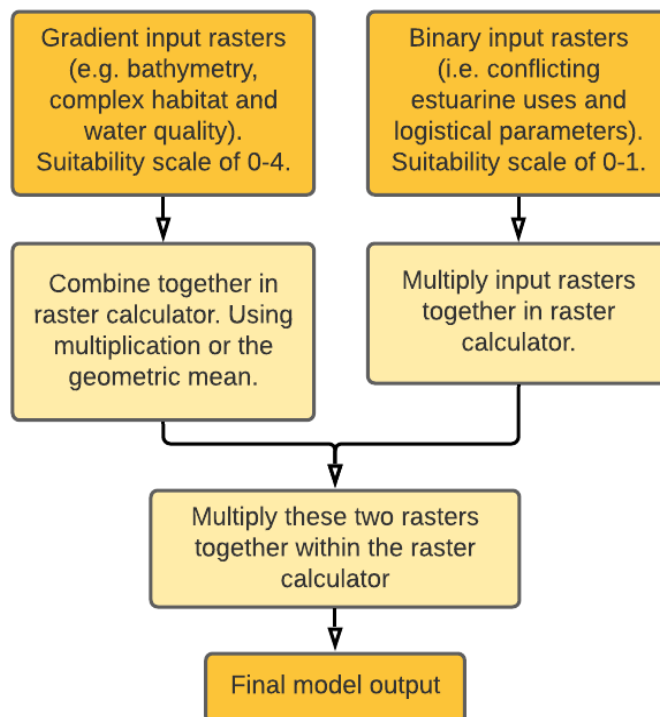


Figure 30. Schematic describing how binary and gradient sub-model are constructed and combined to a final model.

## Final model calculation

For our 3 parameter model example the final RSM would be produced using the raster calculator by multiplying the binary/exclusion and gradient sub-models together.

So, the final model calculation would look similar to this:

$$\text{RSM} = \sqrt[3]{\text{Salinity} \times \text{turbidity} \times \text{depth}} \times (\text{exclusion layer})$$

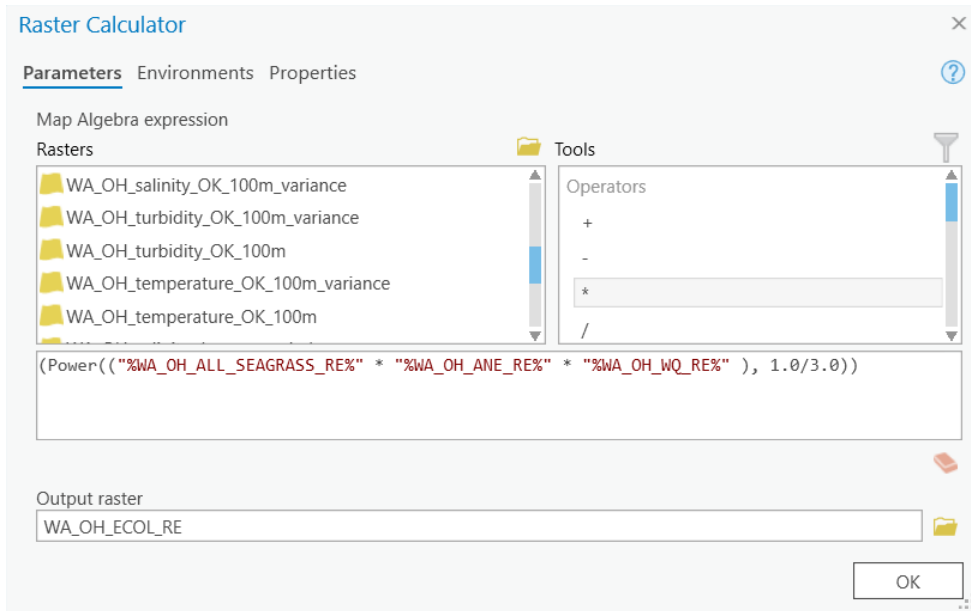


Figure 31. Example of calculating the geometric mean within the raster calculator of ArcGIS Pro.

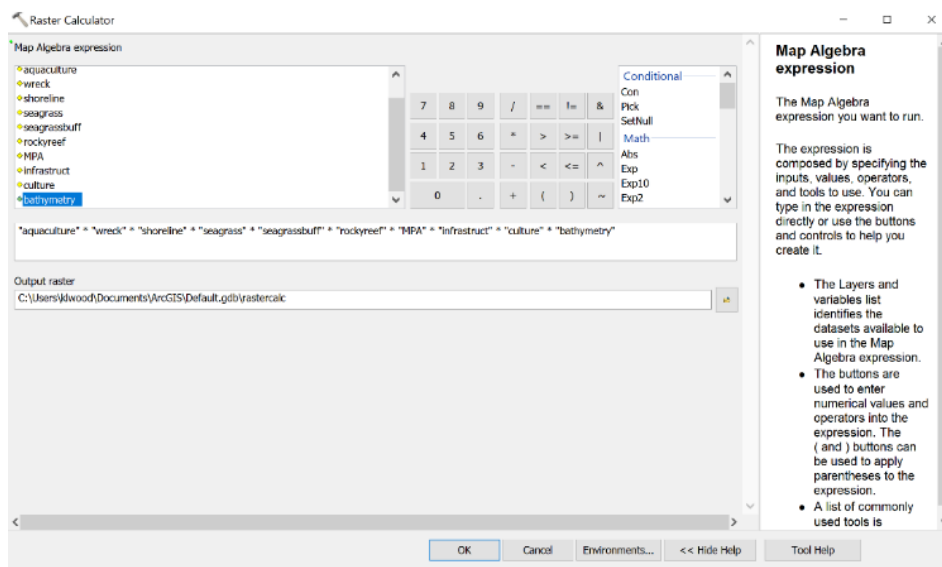


Figure 32. Example of multiplying all the relevant input rasters together in the raster calculator of ArcMap.

## 4.6 Incorporating weights into RSM calculation

Parameter weightings may also be incorporated into a restoration suitability model, assuming that there is sufficient information with which to determine these values. Weightings may be added into the equation in the Raster Calculator step, in the example below the bathymetry layer is given a weighting of 70% and the slope layer is given a weighting of 30%. Weightings may be included in decimal or integer form, as long as the sum of the weightings is equal to the value of the denominator in the final fraction (Figure 33).

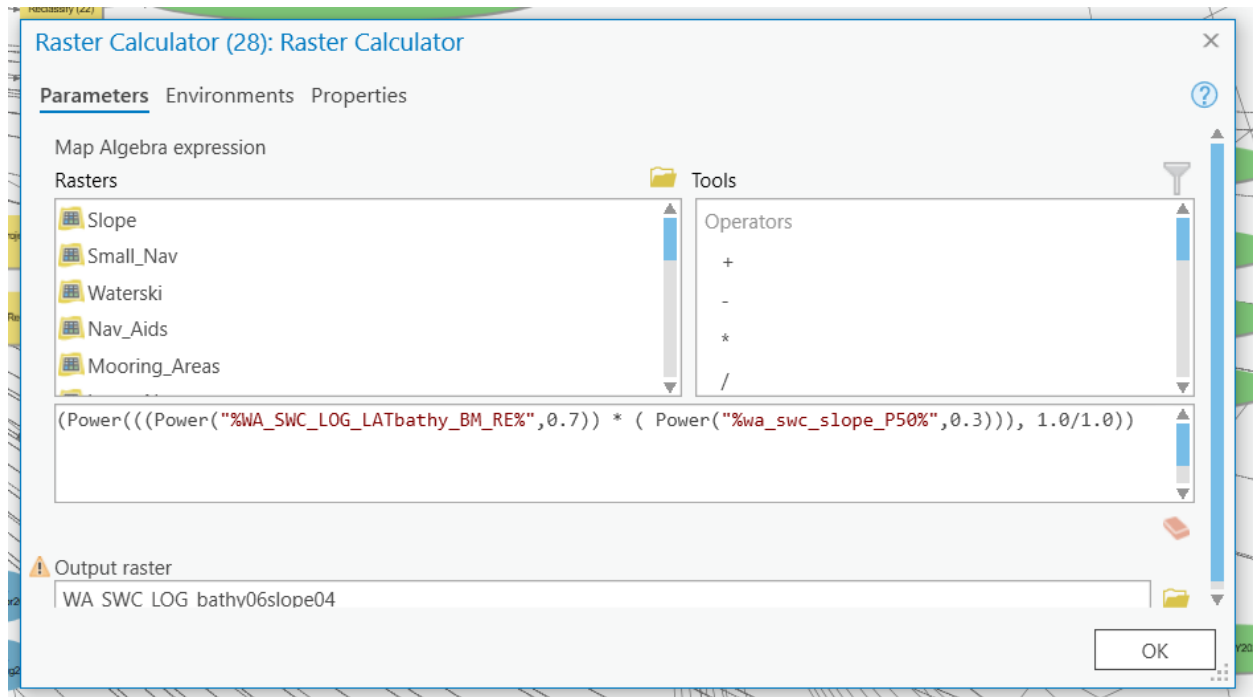


Figure 33. Example of calculating the geometric mean with parameter weightings applied within the raster calculator of ArcGIS Pro.

## 4.7 Using Suitability Modeler in ArcGIS Pro

Those with access to ArcGIS Pro software may wish to consider completing steps 4.4 - 4.6 using the Suitability Modeler tool. Preparing the data for use in the suitability modeler generally follows the same workflow articulated in this section; however, the suitability modeler provides a more interactive environment allows the user to see, on the fly, the impact of each input on the model. It also allows for on-the-fly adjustments of model weights and suitability scales without having to create many different versions of the model inputs. Finally, the user can set parameters for recommended areas by setting minimum and maximum sizes, ideal shapes, and minimum and maximum distances among proposed sites. Following the above workflow, users can apply classifications and weights to the "gradient" data categories and use the binary data category as a mask in the final step to exclude any areas that are completely unsuitable for the project.

While this tool shows promise for streamlining the workflow, this tool has not been tested against the approach outlined in the rest of this document. Preliminary experience with the tool suggests that data preparation requirements can be very precise – even more so than the requirements presented in this manual. Furthermore, at the early stages of restoration suitability modelling, it may be preferable to produce a map of all possible locations, rather than just the optimized site locations, as further site verification may be needed. Users considering using this tool are encouraged to test the results of this tool against the approach outlined in this manual and determine which approach works best. Learn more about the suitability modeler widget [here](#).



# 5 NEXT STEPS TO UNDERTAKE AFTER DEVELOPING A RESTORATION SUITABILITY MODEL

After developing the habitat or restoration suitability model, there are a few important steps to take to ensure that final restoration sites are selected with confidence based upon the guidance provided by the model. These include undertaking: (1) model verification/validation steps, (2) conducting ground-truthing exercises to survey potential sites, (3) engaging with stakeholders to further refine potential sites, and (4) producing a report summarizing model outputs and findings.

## 5.1 Model verification and validation

To determine the reliability and utility of a habitat or restoration suitability model produced, it is important to assess the accuracy of the model. Generally, to implement a model with confidence there is four-step process that should be undertaken: development, calibration, verification and validation (Brooks, 1997; Theuerkauf and Lipcius, 2016).

**Development** refers to the application of wildlife-habitat (or logistical) relationships to spatial datasets. This is part of developing the parameter criteria and raster reclassification steps which we've already completed in previous sections.

**Calibration** ensures that the index/suitability scores of the model span the entire width of potential values (e.g., ranging from 0.0 to 4.0), to allow sufficient distinction in describing differences among sites. Calibration also enables ease of comparison of models generated for the same shellfish species across different geographies, provided the models are on the same suitability scale.

**Verification** requires the assessment of suitability model outputs against independent qualitative or categorical (ranked) data. For example, a presence/absence dataset for shellfish in a given estuary, could be used to provide verification by assessing positive or negative correlation to the model outputs.

**Validation** involves testing the model outputs against independent quantitative data. To the extent feasible, validation should be a priority exercise for developing an HSM or RSM as it provides the greatest measure of model validity and predicted reliability for informing siting decisions. It is essential that data used for validation are fully independent of data used within the suitability model—use of non-independent data (e.g., use of oyster density data within an HSM/RSM and re-use for validation) can lead to circular logic.

Typically, validation assessments involve regression analyses of model outputs (e.g., suitability scores) against independently collected population density or abundance datasets for corresponding locations (Theuerkauf and Lipcius, 2016). These independent data can be purposefully collected (e.g., survey of locations post-HSM/RSM development), or leverage independent, existing datasets (e.g., reef monitoring efforts by a state resource agency). Where there is potential for new data collection, it is valuable to conduct *a priori* assessments of minimum sample sizes required for statistical power to identify statistically significant correlations (e.g.,  $R^2$ ), as well as to randomly sample locations along the full spectrum of predicted suitability (i.e., unsuitable, marginally suitable, suitable).

Metrics used for validation should correspond with those relevant to the developed RSM. For example, if the RSM is developed to identify locations that are likely to maximize population recovery, then oyster density would be a relevant dataset for validation. The form of the relationship between suitability and independent datasets used for validation may vary (e.g., linear, non-linear), but should generally be positive. A lack of correlation or relationship between suitability scores and the data used for validation may indicate a missing parameter (e.g., dissolved oxygen) within the RSM that must be addressed before it can be reliably used for restoration siting. If validation of model outputs has already been achieved, verification is not required.

Whilst each of the above four steps will help assess the accuracy, reliability and usability of the output, the reality is not every restoration project is going to thoroughly test the integrity of model outputs, and largely

depends on local data and resource availability, and time constraints of the project. There are some additional strategies outlined below, that may provide a suitable work-around for where project time or resources are constrained.

### 5.1.1 Comparison to historic or current shellfish distribution maps

One of the simplest ways to verify suitability model outputs is to compare to a shellfish distribution map. However, the utility of this approach will depend on data availability across the study area. Caution is advised when using historic shellfish distribution maps, particularly if the study area has undergone substantial modification or urbanization, as sites once suitable for shellfish reefs, may no longer be suitable due to changed hydrology or water quality condition. It is also important to consider the level of completeness of shellfish distribution maps available for your study system – absence of available data does not necessarily equate to absence of shellfish presence; it may be the case that not all areas have been surveyed. If time allows undertaking assessment trials of the target species examining growth, survival and/or condition, across the highly suitable areas identified in by the RSM may be beneficial. This approach allows the project group to understand contemporary success of the target species as opposed to historical success.

### 5.1.2 Ground-truthing with site-specific surveys

The most common and practical way to assess the accuracy of suitability model outputs for the purpose of on-ground restoration work, is to conduct targeted site surveys. Where resources are available, it is a good practice to survey areas along the full spectrum of suitability (including unsuitable (score = 0), moderately suitable (score = 0 to 3), and highly suitable areas (score = 3 to 4) to evaluate accuracy of model predictions.



Figure 34. Native Sydney rock oyster (*Saccostrea glomerata*) reef. Credit: Alice Howie.

For example, when developing an RSM for Pamlico Sound, North Carolina, USA, researchers conducted ground-truthing of an early draft RSM that omitted a dissolved oxygen layer and noted that locations predicted as highly suitable exhibited hypoxic conditions. The ground-truthing identified the importance of developing a novel dissolved oxygen layer and integrating it within a revised RSM for the system to improve quality of the RSM predictions for informing restoration siting.

However, where time and resources are limited, the project team may prefer to focus site surveys on areas that appear in the model as moderately to highly suitable. Site surveys may be done by the team or through a contractor. Different methods of site surveys will vary on the type of data needed to be collected and depth of target sites. Generally, it is important to collect information for each site on substrate firmness, sediment type, presence of other habitat types, depth (subtidal), proximity to other features, and sulfur-smell in the sediment etc.

Intertidal reef site surveys will often need to be accessed by boat, but the surveys can be done on foot at low tide. Whereas surveys for subtidal reef sites will require towed video cameras, or a dive team to assess the site and collect samples, if required.

The restoration suitability model for Port Phillip in Victoria, Australia required a focussed site survey to be completed around the southern site of Dromana. Initially, the project team undertook SCUBA surveys of two 5-ha areas from the highly suitability area identified by the RSM (Figure 35). These initial surveys were observational surveys that identified higher than expected amounts of seagrasses (mixed *Zostera nigricaulis* and *Halophila australis* beds), that if mapped and included in the RSM would have excluded the area. Following from these findings the project team engaged an environmental consulting firm to complete a rapid habitat mapping and ground truthing survey of the Dromana Bay region (Figure 35) with a particular focus on the identification of seagrass habitats that were not currently mapped.

Initially, seabed features and survey areas of interest were identified (western, central and eastern sectors – Figure 36A) using a combination of LiDAR (Light Detection and Ranging) reflectance and bathymetry (depth limited to <12 m as this depth represents optimal limits for future SCUBA diving operations for monitoring) both datasets were readily available from the state government.

Transects were completed over the seabed features using a Remotely Operated Vehicle (ROV) with underwater positioning (Figure 36A). The ‘outbound’ leg of transects ran at low altitude allowing detailed inspection of features and the inbound leg at higher altitude (1.5 m) for overall biotope views and still image capture. Tracks were classified using the Victorian Government Combined Biotope Classification Scheme (CBiCS). Seagrass beds were digitized using thresholds of reflectance values and hand-digitization for nearshore seagrass beds in the eastern sector (Figure 36B) due to interference from shoreline waves, cliffs and manmade structures. The seagrass bed in the eastern sector of the bay was confirmed from two historic towed video transects intersecting the feature.

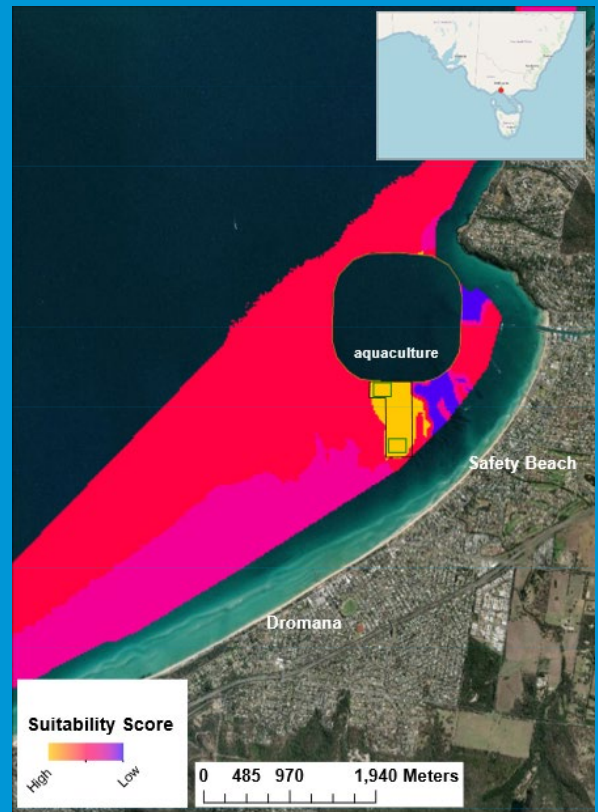


Figure 35. The final RSM model output for Dromana, showing highly suitable region in orange and the North and South 5 ha areas as green rectangular polygons where initial ground-truthing site surveys were undertaken.

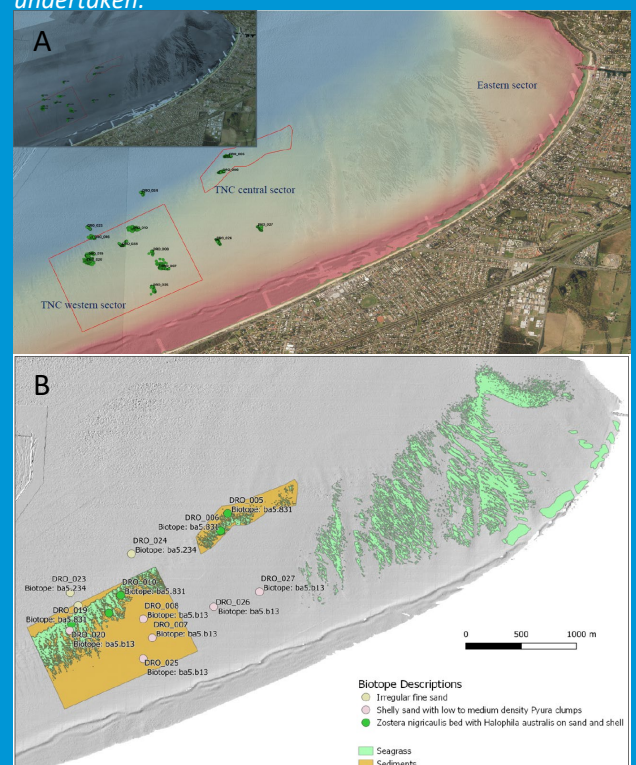


Figure 36. A) Study transects in the survey areas in Dromana Bay (western and central sectors) and seagrass bed in eastern sector showing surveyed seabed features (inset: LiDAR reflectance). B) Biotope classification from transects and mapped extent of seagrass and sediment biotopes in Dromana Bay.

Outcomes from the survey were that three biotopes were mapped (Figure 36B) and a seagrass free area of moderate suitability was identified for shellfish reef restoration (Figure 37). Additionally, the surveys confirmed previously unmapped *Zostera nigricaulis* seagrass beds in the Dromana Bay region. The bed in the eastern sector is expansive and is the largest intact bed in this region of Port Phillip. Within the other survey sectors (western and central) the seagrass beds were arranged in dendritic patterns perpendicular to shore. These features continue outside of the surveyed sectors for 10s of kms further along the coastline of Port Phillip and if the observed pattern holds true would contribute a significant and unmapped expansion of known seagrass beds in Port Phillip adding substantially to the marine estate of the state of Victoria.

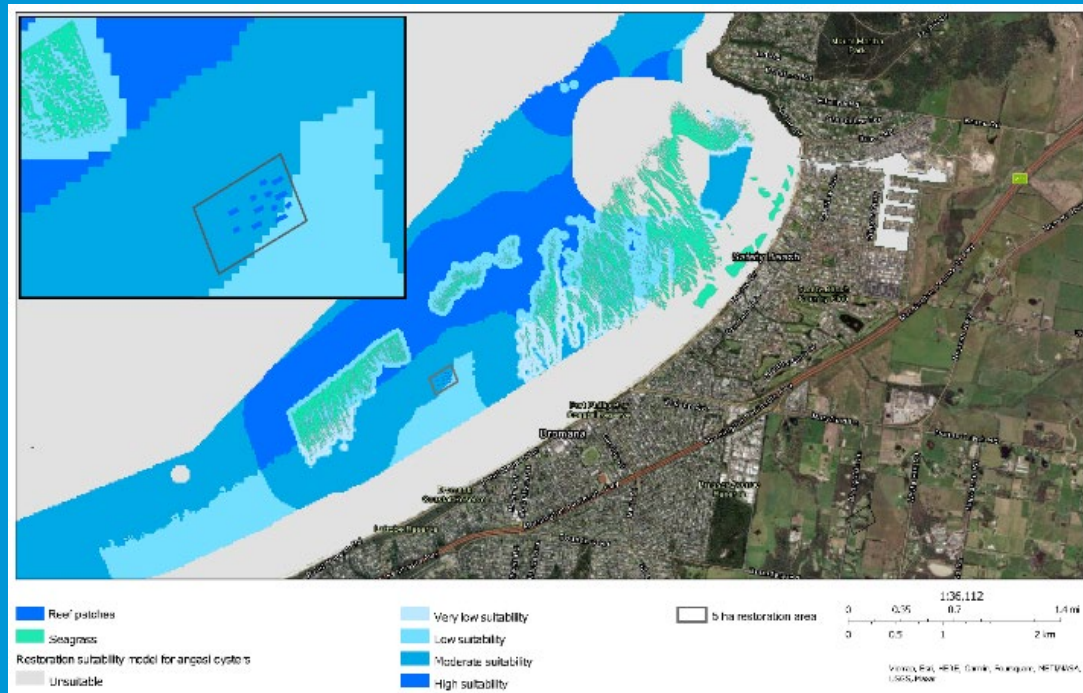


Figure 37. Final location of Dromana reef and 5 ha restoration permit area with final RSM output and mapped seagrass (Inset = Dromana reef oyster reef patches and 5 ha restoration permit area in greater detail).

## 5.2 Stakeholder engagement

The first principle underpinning ecological restoration is ‘ecological restoration engages stakeholders’. When conducting site surveys, or shortly thereafter, it is time to engage local community stakeholders to present potential restoration sites and document feedback to integrate into the suitability model. Engaging with the local community early on allows for the candidate restoration sites identified during modelling to be discussed and further vetted, gaining input and consensus among stakeholders. This process ultimately will assist in narrowing down final suitable sites. Community groups such as recreational fishers, birdwatchers or conservation groups are often valuable to engage, as they often have deep institutional knowledge of what is currently happening in the estuary and can speak to other tidal, seasonal, annual events and variations in water quality, sediment movement, hydrology and habitat variation. Other stakeholder groups recommended for consultation are the Department of Transport and Local Council groups, visit [Appendix B](#) below for more information on conducting stakeholder engagement work.

## 5.3 Communicating modelling results

### Suitability modelling report

Having constructed and completed restoration suitability model runs, it is important to be able to communicate the modelling results to other team members and organisations, who possess a range of GIS-based knowledge. An RSM report should provide sufficient information for readers to understand how the model was constructed (without being overly technical), as well as an overview of the results and assessment of whether there are any caveats or limitations of the model. Below is a list of components that can be included in a report.

- Project background and context (e.g., study area, focal species, scale, planning objective)
- Parameter criteria (e.g., justification and references)
- Map of model output
- Table detailing model output (summarising percentage and total area classed in each suitability category)
- Brief description of model outputs
- Detail on any model validation/verification steps that were done
- Detail on any ground-truthing exercises conducted
- Detail on any stakeholder engagement activities that assisted in narrowing down potential sites
- Site description of shortlisted sites with which to proceed with
- Caveats or limitations of the model

### Displaying modelling outputs online

Early in the modelling planning process, it is good practice to discuss with the broader project team what the physical outputs of the suitability model are needed and who the end-users of the product are. Often alongside the RSM report, there is a need for a few static maps to share with partners and communicate with stakeholders. The use of an interactive and online web-based mapping is becoming increasingly popular as a way to communicate with the broader stakeholder community (Figure 38).

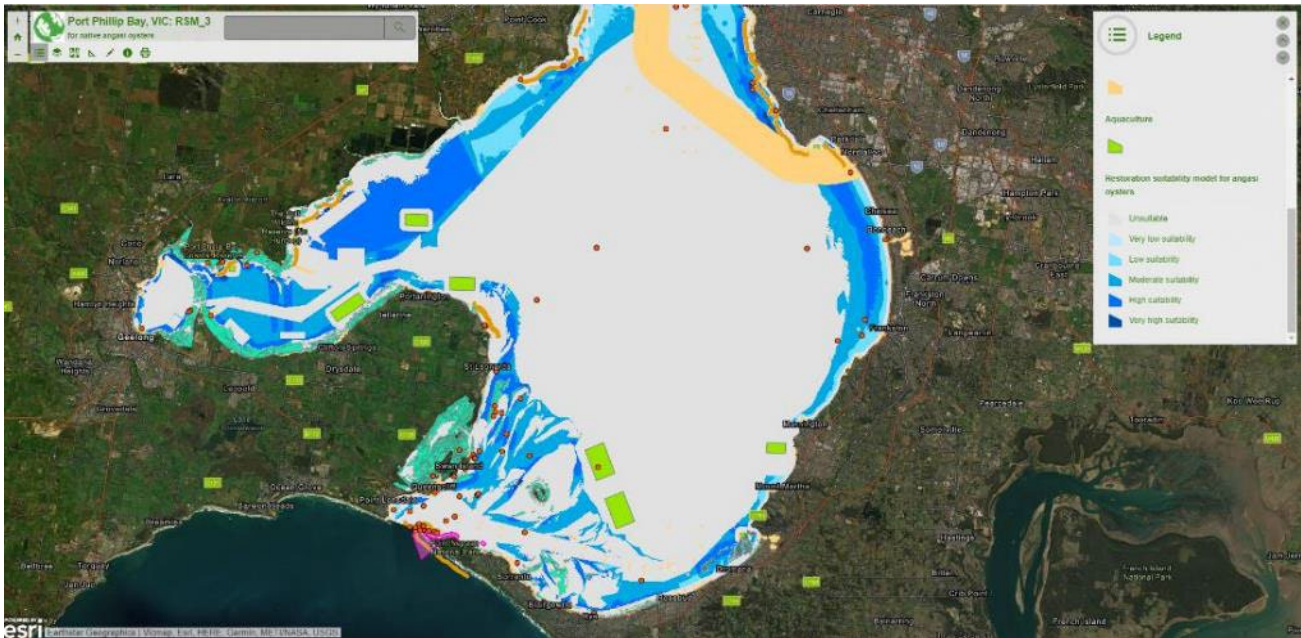


Figure 38. Example of ArcGIS Online web map app showing the restoration suitability model for Port Phillip Bay.

## 6 LIMITATIONS AND FUTURE DIRECTIONS

Restoration suitability modelling is in an everchanging state of evolution and improvement, with new methods, tools, and technologies being developed and leveraged. Below we discuss new horizons for modelling methods and approaches, the utility of emerging technologies, and the role of other tools.

Each model discussed herein has limitations, largely dependent on the locality that the restoration project is poised to take place. A common limitation is insufficient data available to meet desired or target restoration suitability modelling outcomes. Funding can also be a potential limitation for future monitoring of restoration projects and the ability to validate the model.

### 6.1 New modelling frameworks and methods Targeted ecosystem service models

Typically, the goals of shellfish reef restoration projects extend from reinstating a particular shellfish population or habitat area for the target species, to the provisioning of specific ecosystem services (McDonald, Jonson and Dixon, 2016). Ecosystem service-based goals may include shoreline stabilisation, wave dissipation, water filtration, enhancement of fisheries productivity/harvest and provisioning of habitat to fish and invertebrate communities (La Peyre *et al.*, 2015; Gilby *et al.*, 2019; Theuerkauf, Eggleston and Puckett, 2019). The methods outlined in this manual will guide a user on how to construct a habitat or restoration suitability model for shellfish reefs, based only on the feasibility of restoration as determined by the parameters and criteria chosen.



Figure 39. *Saccostrea glomerata* and mangroves growing together. Credit: Francisco Baena-Martinez.

However, to further refine sites, or target sites that will likely have a good outcome for certain ecosystem services, additional parameters (and parameter weightings) may need to be applied which align with specific targeted ecosystem services. For example, if the goal is fisheries enhancement, it may be particularly important to ensure the site chosen for restoration is connected to other essential fish habitats in the estuarine seascape mosaic, such as mangrove, seagrass, and saltmarsh (Gilby *et al.*, 2018, 2019).

Consequently, proximity of sites to other estuarine biogenic habitats may have higher relative weights in the model.

Whilst there has been some noteworthy ecosystem service-targeted restoration suitability models produced for shellfish reefs (Theuerkauf, Eggleston and Puckett, 2019), these types of models are expected to become more important and used in the future. The ability to target specific ecosystem services in a model will be of the utmost interest to local stakeholders, partner organizations, and project funders, building confidence in project outcomes.

Table 5. Example table showing TEEB ecosystem types, and highlighting specific ecosystem functions, processes, ecological benefit and parameters for consideration that could be included in a targeted restoration suitability model.

TEEB category	Targeted ecosystem service	Ecosystem processes and functions	Ecological benefit/value	Parameters for consideration	Resources
Erosion prevention	Shoreline stabilisation	Attenuates and/or dissipates waves, sediment retention	Increase submerged aquatic vegetation (SAV) & adjacent saltmarsh habitat, decrease effects of sea level rise and storm surges	Shoreline exposure (fetch + wind direction + wind speed), current velocity, vessel traffic, existing erosion hotspots, substrate type, sedimentation risk presence of seawalls	(Chowdhury et al., 2019, de Paiva et al., 2018, La Peyre et al., 2015, Dunlop, 2016, La Peyre et al., 2014, Theuerkauf et al., 2017)
Habitat for species	Boosting biodiversity & recreational fishing	Provides suitable reproductive habitat and nursery grounds, sheltered living space	Increase biodiversity and productivity, and recreational fishing use	Proximity to complex habitats, distance from mouth of estuary, overlap of existing habitat of oyster predators (e.g. Bream),	(Gilby et al., 2020)
Wastewater treatment	Water filtration	Provides nutrient and pollution uptake	Decrease suspended solids, turbidity, phytoplankton biomass and microbial production. Increase dendrification and SAV	Current velocity, areas of high turbidity/TSS, areas with high levels of chlorophyll-a/algal bloom hotspots, water flow rate/velocity	(Theuerkauf et al., 2019)

#### Larval dispersal and metapopulation modelling

A common issue in shellfish restoration work is identifying a source for shellfish larvae. If the target shellfish species is not present in the estuary system, live oysters are often 'seeded' on the reef substrate directly by divers. However, in instances where the target species is already present in the estuary system, it is important to consider reef placement where there is evidence of shellfish recruitment (e.g., to seawalls, adjacent shellfish beds or remnant aquaculture infrastructure).

A major target outcome of restoration is to develop healthy, resilient and self-sustaining reefs, as well as optimize reef placement with respect to estuarine hydrology and existing spawning adult shellfish populations. These considerations are essential to continued larval flow to the newly built reef during the initial rapid growth phase. Similarly, the genetic diversity that comes with distinct metapopulations within an estuary is important to building a resilient reef habitat with the capacity to respond to and cope with multiple stressors in the system.

Incorporation of larval dispersal considerations into a restoration suitability model can take a variety of forms. In simple, semi-quantitative approaches, known patterns of prevailing currents paired with knowledge of potential larval source populations can be considered within models to link larval source areas with the associated areas of larval dispersal and potential recruitment (Figure 40; e.g., Hixon et al. (2022)), In more sophisticated approaches, hydrodynamic models can be linked with particle dispersal models to directly estimate and quantify patterns of larval dispersal and recruitment (Figure 40; e.g., Theuerkauf et al. (2021); Puckett et al. (2018)).

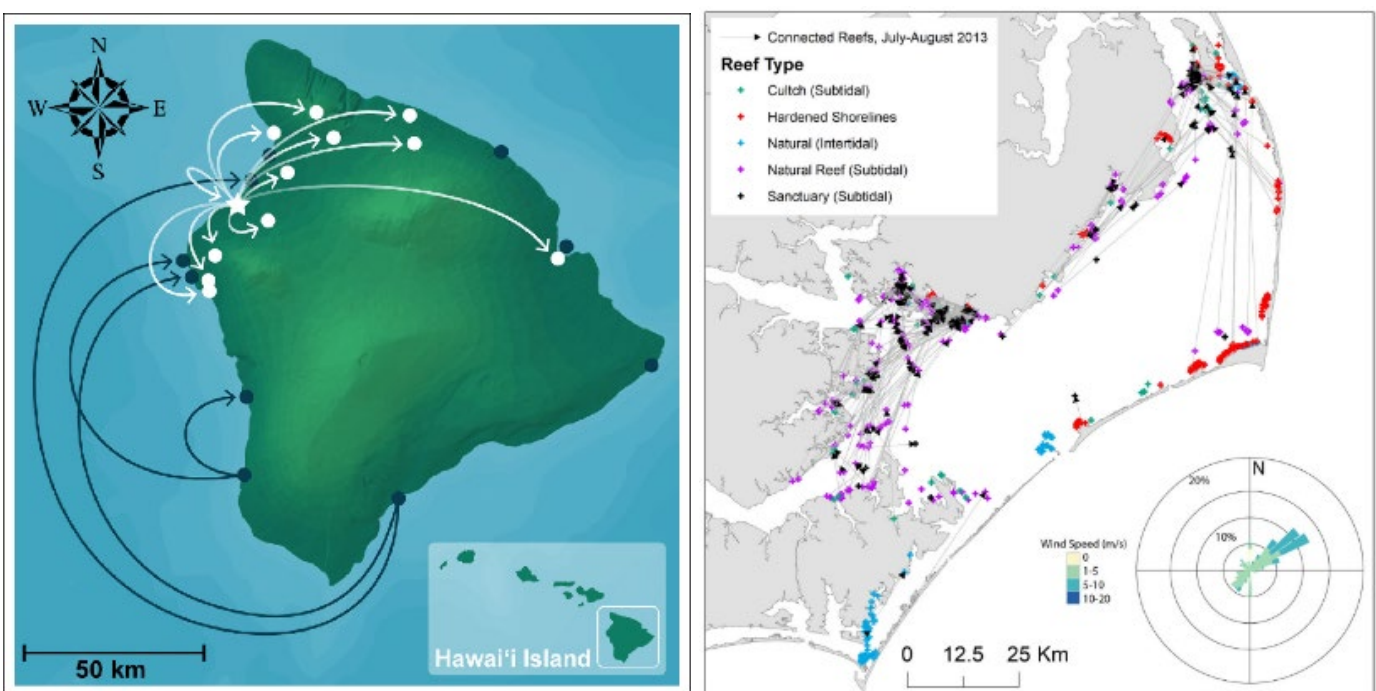


Figure 40. Larval dispersal patterns of surgeonfish among coral reefs in Kīholo Bay, Hawaii; source Hixon et al. (2022) (left) and map depicting larval dispersal patterns in the Albemarle-Pamlico Estuarine System, North Carolina, US; source Theuerkauf et al. (2021) (right).

### Applications for ecosystem and seascape- scale suitability modelling

Another emerging restoration application is seascape-scale restoration suitability modelling. Restoration itself is moving to a much more holistic approach, with less projects tackling single species or habitat restoration, and more targeting ecosystem-wide restoration. For instance, the US's "living shoreline" projects attempt to build back multiple habitat types supporting numerous organisms. Thinking about multispecies and multihabitat restoration is an exciting and emerging new concept to consider in the space of restoration suitability modelling. As a whole, these approaches could take the form of integrating multiple restoration suitability models for individual species to identify areas of overlap where multispecies or multihabitat restoration is feasible.

### Indigenous collaboration: Cultural and environmental considerations.

Indigenous knowledge systems and resource use have been in play for thousands of generations throughout Australia and are particularly relevant for the coastal ecosystems. Traditional Owner (TO) groups have seen climate change in action as sea levels have fluctuated throughout time. Indigenous land and sea management incorporates these knowledge systems with deep cultural responsibility for the health of country. It is with this understanding that TNC outlines a process to encourage early engagement



and project development with traditional owners with possibilities for co-design and realisation of TO's aspirations for country and people. Indigenous Knowledge (IK) including Traditional Ecological Knowledge (TEK) is an area of considerable omission from many geospatial models used for decision support and is an area where more expansive and thoughtful approaches to integrate this knowledge and understanding of natural systems is needed. Incorporation of cultural mapping in the modelling process is a way of collaborating with TOs from project outset with opportunities to incorporate TEK and cultural knowledge into co-design considerations (Poole 2003). This method reflects the principles of participatory research and is being increasingly used in Northern Australia with traditional owners and knowledge holders (Sithole, 2012).

IK and TEK is distinct from western science, citizen science and local knowledge, in that they include not only direct observations and interactions with plants, animals, and ecosystems, but also a broad spectrum of cultural and spiritual knowledges and values underpinning human–environment relationships often across long time scales (Molnár and Berkes, 2018). It is important to attend to the common challenges and opportunity of IK and TEK integration by following guidance for conducting research in a culturally sensitive, productive and equitable manner (Molnár and Berkes, 2018; Jessen *et al.*, 2022).

Whilst a recent synthesis indicates that integration of TEK can present methodological challenges, there is emerging consensus that TEK reaches its full potential when involved and incorporated at all levels of the research and modelling process (Bélisle *et al.*, 2018). Importantly, integration of TEK should come from an 'inclusive' approach or perspective wherein all stakeholders are contributing and working towards a common objective and mission, rather than an 'extractive' approach i.e., holders of TEK are included solely for the information that they can provide. Within the restoration guide, we identify multiple opportunities where early and frequent stakeholder engagement can play a pivotal role in the development of useful restoration suitability models. However, innovation and creative approaches are still needed towards full, appropriate integration of TEK and IK into restoration suitability models, as well as the restoration planning process more generally.

## 6.2 Role of new technology

### Remote sensing

New technology is rapidly emerging and being applied in restoration, particularly in remote sensing and machine learning applications. Many of these new technologies may help meet critical data limitations when conducting landscape-scale analyses similar to restoration suitability modelling. Given the rapid anthropogenic changes to our estuaries, catchments and marine environments, the biological, chemical and physical complexity has increased enormously. High resolution and spectral imagery from either satellite and/or drone-based capture is greatly contributing to the efficient collection of data across large geographic areas. Aerial imagery and LiDAR- derived products have been used to track changes in ecosystem extent and condition, monitor movement of invasive species and predict habitat migration under sea-level rise scenarios. Examples of high-resolution data sources include: Google Earth, Earth Explorer, Sentinel Hub, Planet, DigitalGlobe (now the Maxar Open Data Program) and NearMap.

Satellite remote-sensed data has also been used to estimate environmental variables that relate to water quality. However, the remote sensing approach has been largely limited to their optical properties based on visible, near-infrared and infrared signals (i.e., turbidity, chlorophyll-a and sea surface temperature) (Miller and McKee, 2004; Harvey, Kratzer and Philipson, 2015; Kilpatrick *et al.*, 2015). These data and information are useful to model spatial trends within surface level or shallow embayments. Depth-related subsurface measurements of water quality parameters are generally of more use as an indicator for suitable conditions for shellfish and other bottom-dwelling sessile organisms. Stratification of estuaries is not uncommon, and this can sometimes create distinct hypoxic layers as well as thermo- or haloclines in the water column leading to long-lasting habitat effects, which can potentially be detrimental to shellfish health. *In situ* water quality is one of the most critical data gaps, as there is no complete, state-wide estuarine water quality monitoring program across many states in Australia, the collection of such data is often left to the discretion of the local council. Water quality as we know is a critical parameter when

assessing the site suitability for shellfish reefs, as the bivalves are largely sessile creatures, they do not have the ability to move towards more suitable conditions should the need arise. Emerging technology such as Raman spectroscopy to measure subsurface temperature and salinity (Artlett and Pask, 2017), amongst development of hydrodynamic models and other remote-sensing applications may assist in further addressing some of these limitations.

### Environmental DNA analysis

Using environmental DNA (eDNA) assays to determine the larval presence of a target shellfish species has been shown to give accurate results. Previously it was difficult to detect the presence of larvae in project areas. eDNA analyses are even capable of detecting the difference between closely related species of shellfish larvae. The use of eDNA could be utilised for the management of restoration projects to help detect potential drivers of the disappearance of the target species like parasites or invasive species. In the past detecting certain detrimental invasive species in shellfish required lethal methods (Marshall and Stepien, 2019).

## 6.3 Role of other tools

In addition to restoration suitability models, there are a wide range of other decision support tools that can provide valuable information to support the success of restoration efforts. NGOs, government agencies, academic institutions, and the private sector develop and manage these tools, many of which are web-based and publicly available.

The Nature Conservancy develops and manages a range of science-based conservation decision support tools, such as the Coastal Resilience and Mapping Ocean Wealth platforms, as well as the Oyster Calculator. [Coastal Resilience](#) is an online mapping platform to provide planners, government officials, and communities with information to develop risk reduction, restoration and resilience strategies. [Mapping Ocean Wealth](#) is a data viewer to support a shared understanding of the value of marine and coastal ecosystems to people—including a range of global maps, regionally-specific studies, reference data, and a number of ‘apps’ that provide key data analytics. The [Oyster Calculator](#) is an ‘app’ within the Mapping Ocean Wealth platform that uses two key ecosystem services — water filtration and fish production — to provide insight into how ecosystem services can be used to set restoration objectives, in order to answer a critical question of "*How much shellfish restoration is enough?*"

Government agencies, such as the U.S. National Oceanic and Atmospheric Administration utilize tools to support broad goals of national spatial planning, such as OceanReports, or regional industry planning, such as the Gulf AquaMapper. [OceanReports](#) is a web-based, report-centric tool that provides coastal and ocean planners in the United States with a high-level of automated spatial analysis for a custom-drawn area of interest—providing insights on a broad range of environmental and/or space-use interactions. The [Gulf AquaMapper and National AquaMapper](#) provides industry-specific information to support spatial planning and siting of new aquaculture operations amongst a landscape of opportunity and constraints-based parameters.

Collectively, these tools can place a specific restoration project within the broader context of other ocean-based industries or conservation priorities (e.g., OceanReports), or provide deeper insights into potential outcomes of specific restoration activities (e.g., Oyster Calculator).

# Appendix

## Appendix A: Sample Data Parameters

Parameter	Criteria (more suitable = 4, unsuitable = 0)	Rationale
Bathymetry	4 - 10 m = 4; 0-3 m = 0; >10m= 1; 3 - 4 m = 1	logistically difficult to construct below 10m; risk of disturbance in less than 3m depth
Salinity Average	N/A	Not included in model because all areas fell within known ecological tolerance
Temperature Maximum	N/A	Not included in model because all areas fell within known ecological tolerance
Dissolved Oxygen Minimum	N/A	Not included in model because all areas fell within known ecological tolerance
Substrate	N/A	Not included in model due to suitable, soft substrate across study area
Seagrass avoidance	Areas with no seagrass = 4; areas with 45%+ coverage = 0; 15 - 45% coverage = 1, <15% coverage= 2	Limit impact to existing seagrass beds
Seagrass proximity	Areas within 5-500m buffer =4; 5m buffer around 45% + coverage = 0; all other areas = 2	Connectivity to other structured habitats increases diversity, but want to avoid building directly on dense seagrass beds
Rocky reef proximity	N/A	Not included in model
Shipping channel avoidance -small craft channels	Areas within 20m of nav channel = 0; 20 - 50m buffer = 2; all other areas = 4	Reduce threat of collision, need for remapping, risk to divers
Shipping channel avoidance- large craft channels	N/A	Not included in model due to lack of distinction between shipping channels for small vs. large crafts
Recreation/ski/watercraft zones avoidance	Areas within waterski zones = 1; areas within a 50m buffer = 2; all other areas =4;	Reduce threat of collision, need for remapping, risk to divers
Aquaculture zones avoidance	Aquaculture areas = 0; 0 - 20m buffer around areas = 1, 20 - 50m buffer = 2; all other areas = 4	Safe working zone from aquaculture sites
Commercial fishing zones avoidance	Area A = 1; Area B = 2; all other areas are = 4	Reduces risk of gear damage or reef damage
MPAs	N/A	Not included in model b/c no MPAs in study area
Culturally sensitive areas avoidance	N/A	Not included in model b/c no known areas in study area

Historical reefs proximity	N/A	Not included in model b/c no known areas in study area
Remnant reefs/known areas of high density of shellfish proximity	N/A	Not included in model b/c no known areas in study area
Distance from shore	N/A	Not included in model because all areas within 2km of shore
Navigational Aids/Moorings/Coastal Infrastructure	All areas within 20m buffer = 0; all areas = 4	Risk of interference with buoys/moorings and coastal infrastructure
Moorings Areas	Within a zone is 0, outside is 4	Risk of interference with buoys/moorings and coastal infrastructure
Slope	>2° = 0, 20-25° = 1, <20° =4	Difficulty of constructing/maintaining oyster reef on steep slopes

## Appendix B: Strategies for stakeholder engagement and consultation

Stakeholder engagement and community consultation throughout the restoration planning process is critical to the success of the project and an important component of the restoration suitability modelling stage and site selection. One of the first steps in the planning phase of projects is to undertake a stakeholder mapping process to identify all stakeholders that need to be engaged.

Feedback received from these consultations is used to feed into parameter selection, determination of parameter criteria and validation of the restoration suitability modelling. After retrofitting the model with the feedback received, a second round of consultation is recommended, especially if the suitability of the proposed restoration areas has changed considerably. This would ensure reaching a final agreement of the restoration sites that satisfies all parties.

Within the stakeholder engagement and community consultation stage, there are different key groups depending on their role within the project area broadly these are (1) government agencies and organisational (professional) stakeholders, (2) community groups and recreational stakeholders, (3) Traditional Owners.

### Government agencies and professional stakeholders:

This group is formed by the relevant agencies that will have a key role in the permitting process of the project, and their consultation is mandatory. This group could also include relevant stakeholders that will provide insightful information or that their consultation will provide a stronger case for easing the permitting process and ultimately the restoration suitability modelling. Examples of key stakeholders are fisheries and relevant government agencies, National Parks and Wildlife Services, landowners (Crown Lands), local councils, waterways management/catchment authority, maritime services (of particular importance in high recreational or commercial boating estuaries such as Ports), industry (aquaculture). It's also worth meeting with government agencies responsible from reviewing permitting applications early on in the project and restoration suitability modelling process, to address any concerns and forecast any potential challenges ahead of time.

Government agencies and organisational (professional) stakeholders are a key part of not only the restoration suitability modelling stage, as they are often crucial data providers, but to the permitting, regulatory and governance process for restoration. Sometimes, some government agencies may also be project partners, and this would benefit the consultation process as they may offer assistance on identifying and contacting key local agencies and stakeholders.

Early consultation with government agencies in the data acquisition stage, prior to building the restoration suitability model, ensures that the model parameters adhere to guidelines of governing bodies. This data acquisition step is often the first contact between practitioners and relevant government departments and sets a solid platform for the restoration to move forwards from.

Once the model is built and the potential restoration areas are selected, an official consultation with the local government bodies and professional stakeholders will occur. Several key steps help the consultation process run smoothly:

1. **Identify** main government bodies in the area and their potential representatives, examples are:
  - Natural Resources Manager of the local Council
  - Government agencies responsible for reviewing the permits
  - Fisheries and/or Primary Industries Manager
  - Landowner Agencies

### Stakeholder engagement strategies

- Stakeholder workshops (with local residents and recreational users)
- Distributing survey to community
- Meetings with local council and waterway managers
- Holding Q/A sessions
- Workshops with community groups (e.g. local fishers and birdwatching groups)

- Maritime Officers
  - Biosecurity managers (in case of seeding or shell deployment may occur)
  - Other relevant government agencies
  - Local industries (aquaculture operations managers, etc)
2. **Official consultation:** Official consultation may take place by grouping several agencies and/or professional stakeholders into a single meeting depending on their expertise, or meeting each of them independently. At the official consultation, several aspects of the project will need to be covered assuming no prior knowledge of the restoration project and target ecosystem/species:
    - Introduce the project lead and project team
    - Define target ecosystem and introduce why there is a need to restore (history of decline and benefits i.e. ecosystem services)
    - Project outline: Why restore reefs within this geographic area, project goals, reef restoration processes, methods, materials and potential involvement opportunities.
    - Site selection process, restoration suitability modelling and potential sites
    - Question and Answer (Q&A) session.
  3. **Feedback:** Each agency is likely to provide feedback on their area of expertise. Based on the feedback received, the information could be integrated back into the restoration suitability model and/ or the site selection process.
  4. **Agreement:** Further consultation will be required to reach a final agreement. It is important to integrate every potential concern/question or feedback item raised on the official consultation in the project planning and readjust any necessary part of the project accordingly. In further consultations, it is important to provide information regarding the updated areas of the project based on the feedback received and provide several options to come to a consensus to any potential concerns and or questions raised. Often negotiation is key at this step and maintaining a good relationship with stakeholder groups is critical, as consultation will likely occur throughout the life-cycle of the project.

## Community groups

Community groups and recreational stakeholders often play a central role in the development on the project and their feedback is of equal value as professional stakeholder consultation. The importance of community groups within a waterway varies geographically, so before any consultation, it is important to identify relevant community groups and their role within the community. Among these, local fishing groups, conservationist and environmental groups, rowers and kayakers, surfing and swimming clubs, diving clubs, could take part on the consultation process. Engaging community groups early on in the planning stages is critical to gaining social licence, support, and buy-in this local support is critical and can make or break a project, particularly in the regulatory approvals stage.

1. **Undertake initial contact** with the local catchment or natural resource management body to gauge an understanding about what they may consider to be the expected community response and highlight any potential concerns.

Attempt to mitigate any negative outcomes from subsequent direct engagement with stakeholders, by addressing and predicting potential concerns that may arise in discussions. For each community group or broad category of community groups (e.g. recreational fishers) its good practice to organise workshops or community engagement events that are specifically tailored to the group in question It is important to ensure you have answers to expected questions from the community, a good practice is to develop a list of frequently asked questions for restoration projects in the geographic region of interest.

2. **Conduct preliminary stakeholder workshops.** Consider having a few workshops or community engagement events targeted to different user groups (e.g. recreational fishing clubs, or a collection of local birdwatchers, and conservationist groups). Adjusting the content presented for each type of community group, can help address any niche concerns. Also consider having a mediator present who knows the community group, e.g., representative from local council or similar.

These preliminary workshops should introduce similar items of these mentioned on the government agencies and professional stakeholder consultations:

- Introduce the project lead and project team
  - Define target ecosystem and introduce why there is a need to restore (history of decline and benefits i.e. ecosystem services)
  - Project outline: Why restore reefs within this geographic area, project goals, reef restoration processes, methods, materials and potential involvement opportunities.
  - Site selection process, restoration suitability modelling and potential sites
  - Q&A session: Q&A session is key, as it is when the group would provide feedback and several activities may ensure the final success of the consultation. This can include:
    - Facilitating a first round general Q&A session. During this time, general questions and concerns about the project could be raised.
    - Facilitating a map study session by providing printed maps and markers and allow the group to provide feedback on their preferred sites for restoration and areas to avoid. Facilitating a resolution session through featuring a board or power point slide where concerns could be annotated and among the group, try and provide solutions/actions to ease/solve these.
  - Wrap up: Outline feedback received from the group, provide your contact details in case they want to address some more individually and provide information or next steps (integrate feedback and find/provide potential solutions).
3. **Amongst team,** refine potential sites selected, refine suitability model if required, ITs critical after receiving community feedback to be able to demonstrate how this has been incorporated into the planning process.
  4. **Follow-up stakeholder workshop.** This workshop should primarily show that we have incorporated community feedback from previous workshop(s) into the restoration planning process and addressed any concerns. This workshop should also take the opportunity to further refine potential sites suitable for restoration and allow the community to voice any further concerns. It's important to recognise that there may always be dissenting views in the community. Therefore, it's vital to work with local community leaders and project advisors to understand and determine if these views are widely shared or if these views only represent a small number of vocal individuals.

### Traditional Owners

It should be clearly stated at the outset that Traditional Owner groups do not sit within the stakeholder group setting given their unique status and long connection to place. This can be recognised by law (i.e., ALRA or Native Title Act), or may be recognised either as a treaty or similar (i.e., Noongar Native Title Settlement Act) or as long-standing custodianship without any of these legal recognition (i.e., Larrakia people of Darwin). This does not diminish the sense of connection to country and the cultural responsibility of managing country for one's group and ancestors. As outlined in some of the aforementioned legal documents, consultation with indigenous people for a project should involve "free, prior and informed consent" at a minimum.

Consultation and engagement with TOs should obviously be considered as close to the project start time as possible, if not before the project has commenced. Early engagement and commitment to full consultation with TO groups, which should involve remunerative engagement of people, is an important part of developing an ongoing relationship. One point of difference between TO groups and regulatory agencies is the pathway to approach the relevant organisations due to structural and cultural differences. In many cases there will be an appropriate Aboriginal Land Council and/or Native Title Representative Body listed for a particular region. In addition to this there may be listed Aboriginal Corporations (as listed under Office of Registered Indigenous Corporations (ORIC)) who may also represent groups of local people.

It is commonly reported amongst western science organisations that practitioners do not know how or who to approach in order to discuss a project idea with the TO of an area and in many cases, nothing transpires due to an inability to start the relationship. Often in these situations, once projects are underway, project staff have little time to get the relationship started and these aspirations remain unfulfilled. To alleviate some of these challenges, many government and university research organisations are employing Cultural Engagement Officers (i.e., AIMS and CSIRO) who are aboriginal people with science and research training and can help facilitate researcher, TO project collaboration and outcomes. It is important to consider the time, logistics and costs of proper engagement processes which should be outlined and itemised in any proposed funding application.



## REFERENCES

- Aguilar-Manjarrez, J., Wickliffe, L. and Dean, A. (2018) 'Guidance on spatial technologies for disaster risk management in aquaculture: A handbook'. Available at: <https://www.fao.org/3/CA2240EN/ca2240en.pdf>.
- Angelopoulos, N., Cowx, I. and Buijse, A. (2017) 'Integrated planning framework for successful river restoration projects: Upscaling lessons learnt from European case studies', *Environmental Science & Policy*, 76, pp. 12–22.
- Artlett, C.P. and Pask, H.M. (2017) 'New approach to remote sensing of temperature and salinity in natural water samples', *Optics express*, 25(3), pp. 2840–2851.
- Aslam, S., Siddiqui, G. and Kazmi, S.J.H. (2020) 'A preliminary study on spatial assessment using conservation metrics for intertidal oyster reefs at the Hab River mouth in Pakistan', *Regional Studies in Marine Science*, 33, p. 100956.
- Baggett, L.P. *et al.* (2014) *Oyster Habitat Restoration: Monitoring and assessment handbook*. Arlington, VA, USA: The Nature Conservancy.
- Barnes, T.K. *et al.* (2007) 'A habitat suitability index model for the eastern oyster (*Crassostrea virginica*), a tool for restoration of the Caloosahatchee Estuary, Florida', *Journal of Shellfish Research*, 26(4), pp. 949–959.
- Battista, T.A. (1999) *Habitat suitability index model for the eastern oyster Crassostrea virginica, in the Chesapeake Bay: A geographic information system approach*. University of Maryland.
- Bayraktarov, E. *et al.* (2016) 'The cost and feasibility of marine coastal restoration', *Ecological applications*, 26(4), pp. 1055–1074. Available at: <https://doi.org/10.1890/15-1077>.
- Beck, M.W. *et al.* (2011) 'Oyster reefs at risk and recommendations for conservation, restoration, and management', *BioScience*, 61(2), pp. 107–116. Available at: <https://doi.org/10.1525/bio.2011.61.2.5>.
- Bélisle, A.C. *et al.* (2018) 'Local knowledge in ecological modeling', *Ecology and Society*, 23(2).
- Bersoza Hernández, A. *et al.* (2018) 'Restoring the eastern oyster: how much progress has been made in 53 years?', *Frontiers in Ecology and the Environment*, 16(8), pp. 463–471. Available at: <https://doi.org/10.1002/fee.1935>.
- Beseres Pollack, J. *et al.* (2012) 'A Restoration Suitability Index Model for the Eastern Oyster (*Crassostrea virginica*) in the Mission-Aransas Estuary, TX, USA', *PLoS ONE*. Edited by S. Thrush, 7(7), p. e40839. Available at: <https://doi.org/10.1371/journal.pone.0040839>.
- Breitburg, D.L. *et al.* (2000) 'Oyster reef restoration: convergence of harvest and conservation strategies', *Journal of Shellfish Research*, 19(1), p. 371.
- Brooks, R.P. (1997) 'Improving habitat suitability index models', *Wildlife Society Bulletin (1973-2006)*, 25(1), pp. 163–167.
- Brown, J.R. and Hartwick, E.B. (1988) 'A habitat suitability index model for suspended tray culture of the Pacific oyster, *Crassostrea gigas* Thunberg', *Aquaculture Research*, 19(2), pp. 109–126.
- Burrough, P.A., McDonnell, R.A. and Lloyd, C.D. (2015) *Principles of geographical information systems*. Oxford university press.

- Cake, E.W. (1983) *Habitat suitability index models: Gulf of Mexico American oyster*. U.S.: Department of Interior, Fish and Wildlife Service.
- Cho, Y. *et al.* (2012) 'GIS-based suitable site selection using habitat suitability index for oyster farms in Geoje-Hansan Bay, Korea', *Ocean & coastal management*, 56, pp. 10–16.
- Chowdhury, M.S.N. *et al.* (2019) 'A verified habitat suitability model for the intertidal rock oyster, *Saccostrea cucullata*', *PLoS ONE*, 14(6).
- Coen, L.D. and Luckenbach, M.W. (2000) 'Developing success criteria and goals for evaluating oyster reef restoration: Ecological function or resource exploitation?', *Ecological Engineering*, 15(3–4), pp. 323–343. Available at: [https://doi.org/10.1016/S0925-8574\(00\)00084-7](https://doi.org/10.1016/S0925-8574(00)00084-7).
- De Santiago, K. *et al.* (2019) 'Rapid development of a restored oyster reef facilitates habitat provision for estuarine fauna', *Restoration Ecology*, 27(4), pp. 870–880. Available at: <https://doi.org/10.1111/rec.12921>.
- Ehrenfeld, J.G. (2000) 'Defining the limits of restoration: the need for realistic goals', *Restoration ecology*, 8(1), pp. 2–9.
- Elsässer, B. *et al.* (2013) 'Identifying optimal sites for natural recovery and restoration of impacted biogenic habitats in a special area of conservation using hydrodynamic and habitat suitability modelling', *Journal of Sea Research*, 77, pp. 11–21.
- Esquivel-Muelbert, J.R. *et al.* (2022) 'Spatial variation in the biotic and abiotic filters of oyster recruitment: Implications for restoration', *Journal of Applied Ecology* [Preprint]. Available at: <https://doi.org/10.1111/1365-2664.14107>.
- ESRI (2022) *Coordinate systems, projections, and transformations, Coordinate systems, projections, and transformations-ArcGIS Pro | Documentation*. Available at: <https://pro.arcgis.com/en/pro-app/latest/help/mapping/properties/coordinate-systems-and-projections.htm>.
- Fitzsimons, J.A. *et al.* (2019) *Restoration guidelines for shellfish reefs*. The Nature Conservancy, Arlington VA, USA.
- Fitzsimons, J.A. *et al.* (2020) 'Restoring shellfish reefs: Global guidelines for practitioners and scientists', *Conservation Science and Practice*, 2(6). Available at: <https://doi.org/10.1111/csp2.198>.
- Gann, G.D. *et al.* (2019) 'International principles and standards for the practice of ecological restoration. Second edition', *Restoration Ecology*, 27(S1). Available at: <https://doi.org/10.1111/rec.13035>.
- Gilby, B.L. *et al.* (2018) 'Maximizing the benefits of oyster reef restoration for finfish and their fisheries', *Fish and Fisheries*, 19(5), pp. 931–947. Available at: <https://doi.org/10.1111/faf.12301>.
- Gilby, B.L. *et al.* (2019) 'Identifying restoration hotspots that deliver multiple ecological benefits', *Restoration Ecology*, 28(1), pp. 222–232. Available at: <https://doi.org/10.1111/rec.13046>.
- Gillies, C.L., Crawford, C. and Hancock, B. (2017) 'Restoring Angasi oyster reefs: What is the endpoint ecosystem we are aiming for and how do we get there?', *Ecological Management & Restoration*, 18(3), pp. 214–222. Available at: <https://doi.org/10.1111/emr.12278>.
- Harvey, E.T., Kratzer, S. and Philipson, P. (2015) 'Satellite-based water quality monitoring for improved spatial and temporal retrieval of chlorophyll-a in coastal waters', *Remote Sensing of Environment*, 158, pp. 417–430.

- Hixon, M.A. *et al.* (2022) 'Fish Flow: following fisheries from spawning to supper', *Frontiers in Ecology and the Environment*, 20(4), pp. 247–254.
- Hobbs, R.J. and Harris, J.A. (2001) 'Restoration ecology: repairing the earth's ecosystems in the new millennium', *Restoration ecology*, 9(2), pp. 239–246.
- Hobday, A.J. *et al.* (2016) 'A hierarchical approach to defining marine heatwaves', *Progress in Oceanography*, 141, pp. 227–238.
- Howie, A.H. and Bishop, M.J. (2021) 'Contemporary oyster reef restoration: responding to a changing world', *Frontiers in Ecology and Evolution*, p. 518.
- Jessen, T.D. *et al.* (2022) 'Contributions of Indigenous Knowledge to ecological and evolutionary understanding', *Frontiers in Ecology and the Environment*, 20(2), pp. 93–101.
- Jossart, J. *et al.* (2020) 'Applications of spatial autocorrelation analyses for marine aquaculture siting', *Frontiers in Marine Science*, 6, p. 806.
- Kilpatrick, K.A. *et al.* (2015) 'A decade of sea surface temperature from MODIS', *Remote Sensing of Environment*, 165, pp. 27–41.
- La Peyre, M.K. *et al.* (2015) 'Assessing shoreline exposure and oyster habitat suitability maximizes potential success for sustainable shoreline protection using restored oyster reefs', *PeerJ*, 3, p. e1317.
- Lester, S.E. *et al.* (2020) 'Spatial Planning Principles for Marine Ecosystem Restoration', *Frontiers in Marine Science*, 7, p. 328.
- Lewis, N.S., Fox, E.W. and DeWitt, T.H. (2019) 'Estimating the distribution of harvested estuarine bivalves with natural-history-based habitat suitability models', *Estuarine, Coastal and Shelf Science*, 219, pp. 453–472.
- Linhoss, A.C., Camacho, R. and Ashby, S. (2016) 'Oyster habitat suitability in the Northern Gulf of Mexico', *Journal of Shellfish Research*, 35(4), pp. 841–849.
- Luckenbach, M.W. *et al.* (1999) 'Oyster reef restoration in Virginia, USA: rehabilitating habitats and restoring ecological functions', *Journal of Shellfish Research*, 18(2), p. 720.
- Marshall, N.T. and Stepien, C.A. (2019) 'Invasion genetics from eDNA and thousands of larvae: A targeted metabarcoding assay that distinguishes species and population variation of zebra and quagga mussels', *Ecology and evolution*, 9(6), pp. 3515–3538.
- McAfee, D. *et al.* (2020) 'The value and opportunity of restoring Australia's lost rock oyster reefs', *Restoration Ecology*, 28(2), pp. 304–314. Available at: <https://doi.org/10.1111/rec.13125>.
- McDonald, T., Jonson, J. and Dixon, K.W. (2016) 'National standards for the practice of ecological restoration in Australia', *Restoration Ecology*, 24(S1), pp. S4–S32. Available at: <https://doi.org/10.1111/rec.12359>.
- McFarland, K. and Hare, M.P. (2018) 'Restoring oysters to urban estuaries: Redefining habitat quality for eastern oyster performance near New York City', *PLoS ONE*, 13(11), p. e0207368.
- McLeod, I.M. *et al.* (2019) 'Chapter 25 - Can bivalve habitat restoration improve degraded estuaries?', in E. Wolanski *et al.* (eds) *Coasts and Estuaries*. Elsevier, pp. 427–442. Available at: <https://doi.org/10.1016/B978-0-12-814003-1.00025-3>.

- Miller, R.L. and McKee, B.A. (2004) 'Using MODIS Terra 250 m imagery to map concentrations of total suspended matter in coastal waters', *Remote sensing of Environment*, 93(1–2), pp. 259–266.
- Molnár, Z. and Berkes, F. (2018) 'Role of traditional ecological knowledge in linking cultural and natural capital in cultural landscapes', *Reconnecting Natural and Cultural Capital: Contributions from Science and Policy*; Paracchini, M.L., Zingari, P.C., Blasi, C., Eds, pp. 183–193.
- Pogoda, B. *et al.* (2019) 'The Native Oyster Restoration Alliance (NORA) and the Berlin Oyster Recommendation: bringing back a key ecosystem engineer by developing and supporting best practice in Europe', *Aquatic Living Resources*, 32. Available at: <https://doi.org/10.1051/alr/2019012>.
- Powers, S.P. *et al.* (2009) 'Success of constructed oyster reefs in no-harvest sanctuaries: implications for restoration', *Marine Ecology Progress Series*, 389, pp. 159–170. Available at: <https://doi.org/10.3354/meps08164>.
- Puckett, B.J. *et al.* (2018) 'Integrating larval dispersal, permitting, and logistical factors within a validated habitat suitability index for oyster restoration', *Frontiers in Marine Science*, 5, p. 76.
- Scanes, E. *et al.* (2020) 'Heatwaves alter survival of the Sydney rock oyster, *Saccostrea glomerata*', *Marine pollution bulletin*, 158, p. 111389.
- Schrack, E. *et al.* (2012) 'Restoration works highlights from a decade of partnership between The Nature Conservancy and the National Oceanic and Atmospheric Administration's Restoration Center'.
- Schulte, D.M. and Burke, R.P. (2014) 'Recruitment enhancement as an indicator of oyster restoration success in Chesapeake Bay', *Ecological Restoration*, 32(4), pp. 434–440. Available at: <https://doi.org/10.3368/er.32.4.434>.
- Sithole, B. (2012) 'The ARPNet Dilly Bag: a practical field guide to participatory and other research tools for use by Aboriginal Research Practitioners in Australia', *ARPNet at RIEL, Charles Darwin University, Casuarina* [Preprint].
- Skidmore, P. *et al.* (2012) 'Developing, designing, and implementing restoration projects', *Stream and Watershed Restoration: A Guide to Restoring Riverine Processes and Habitats*, pp. 215–253.
- Snyder, J. *et al.* (2017) 'Oyster aquaculture site selection using Landsat 8-Derived Sea surface temperature, turbidity, and chlorophyll a', *Frontiers in Marine Science*, 4, p. 190.
- Soniat, T.M. *et al.* (2013) 'Predicting the effects of proposed Mississippi River diversions on oyster habitat quality; application of an oyster habitat suitability index model', *Journal of Shellfish Research*, 32(3), pp. 629–638.
- Soniat, T.M. and Brody, M.S. (1988) 'Field validation of a habitat suitability index model for the American oyster', *Estuaries*, 11(2), pp. 87–95.
- Starke, A., Levinton, J.S. and Doall, M. (2011) 'Restoration of *Crassostrea virginica* (Gmelin) to the Hudson River, USA: a spatiotemporal modeling approach', *Journal of Shellfish Research*, 30(3), pp. 671–684.
- Swannack, T.M., Reif, M. and Soniat, T.M. (2014) 'A robust, spatially explicit model for identifying oyster restoration sites: case studies on the Atlantic and Gulf coasts', *Journal of Shellfish Research*, 33(2), pp. 395–408.
- Theuerkauf, S.J. *et al.* (2017) 'Wave exposure structures oyster distribution on natural intertidal reefs, but not on hardened shorelines', *Estuaries and Coasts*, 40(2), pp. 376–386.

Theuerkauf, S.J. *et al.* (2021) 'Habitat value of bivalve shellfish and seaweed aquaculture for fish and invertebrates: Pathways, synthesis and next steps', *Reviews in Aquaculture* [Preprint]. Available at: <https://doi.org/10.1111/raq.12584>.

Theuerkauf, S.J., Eggleston, D.B. and Puckett, B.J. (2019) 'Integrating ecosystem services considerations within a GIS-based habitat suitability index for oyster restoration', *PLoS ONE*, 14(1).

Theuerkauf, S.J. and Lipcius, R.N. (2016) 'Quantitative validation of a habitat suitability index for oyster restoration', *Frontiers in Marine Science*, 3, p. 64. Available at: <https://doi.org/10.3389/fmars.2016.00064>.

Walles, B. *et al.* (2016) 'Guidelines for evaluating performance of oyster habitat restoration should include tidal emersion: reply to Baggett *et al.*', *Restoration Ecology*, 24(1), pp. 4–7.